

# GOULY & SON,

Publishers . . .



AND

Advertising Agents

385 ST. GEORGE'S TERRACE, PERTH, W.A.

AND AT THE

*Catalogue Stall, Coolgardie Exhibition.*

PUBLISHERS OF THE OFFICIAL CATALOGUE OF THIS EXHIBITION.



COMPILERS OF THE ILLUSTRATED WORK ENTITLED

**"The Wealth & Progress of Western Australia."**

TO BE PUBLISHED BY THE COMMISSIONERS OF

The Western Australian International Mining and  
Industrial Exhibition

As a Souvenir of the Enterprise,

AND

UNDER THE DIRECT PATRONAGE OF THE WESTERN AUSTRALIAN GOVERNMENT.



For Terms of Subscription & Advertising Rates

APPLY AT THE

CATALOGUE STALL, or at the PUBLISHING OFFICE,  
St. George's Terrace, Perth.

**GOULY & SON.**

iii.

BUY LAND

AT

MELVILLE PARK ESTATE

NATURE'S PARADISE ON THE SWAN RIVER.

Fishing, Sa ng, Bathing, Rowing all the  
Year round.

The opportunity of a life time.

... APPLY TO ...

ALEXANDER MATHESON & CO.,

ST. GEORGE'S TERRACE, PERTH, W.A.

**THE OFFICIAL CATALOGUE**

**NICHOLSON & CO.,**

IMPORTERS OF .

PIANOS, ORGANS & MUSIC.

SOLE AGENTS FOR:

BECHSTEIN

RONISCH

CHAPPELL

CHALLEN

**PIANOS.**

PUBLISHED BY AUTHORITY.





TAILOR-MADE COSTUMES,  
From 3 Guineas.



HAND-MADE SAC SUITS,  
From 4 Guineas.

# J. McHenry Clark & Co.,

## GENERAL OUTFITTERS

J. McHENRY CLARK.

R. MANNING.

AND

## DIRECT IMPORTERS,

FREMANTLE AND COOLGARDIE,

OFFER YOU

# The Best Value in the Colony.

TELEPHONE 384.

ADVERTISEMENT.

i.

# THE ADELAIDE STEAMSHIP COMPANY, Ltd.

(ESTABLISHED 1875.)

Contractors to W.A. Government for Carriage of Mails on North West Coast and Southern Coast of W.A. and to Eastern Colonies.

Vessels owned by the Adelaide Coy. trade round almost the entire coast line of Australia, from Cairns in North Queensland, calling at every port of importance in Queensland, New South Wales, Victoria, South Australia, and up to Wyndham in the far N.W. of W.A.

**Eastern Australian Service.** The Company's fine Passenger Steamers are despatched weekly from Sydney, Melbourne and Adelaide to Albany and Fremantle, and returning from Fremantle and Albany to East.

**Queensland Trade** is served by regular Weekly Steamers from Melbourne calling at Sydney and all Queensland Ports.

**Esperance Bay Service.** A Weekly Mail, Cargo and Passenger Service is maintained from Albany to Esperance, extending Fortnightly to Israelite Bay and Quarterly to Eucla.

**North West Mail Line.** To all N.W. Ports as far as Derby Monthly, extending to Wyndham Once in Two Months.

### FLEET:

ALLINGA ... .. 2500 tons	WOLLOWRA ... .. 2628 tons	INNAMINCKA ... .. 2801 tons
MARLOO ... .. 2628 "	ADELAIDE ... .. 1711 "	BULLARRA ... .. 1725 "
KADINA ... .. 4000 "	WILLYAMA ... .. 4000 "	KARAWEERA ... .. 2000 "
KOLYA ... .. 3000 "	OURAKA ... .. 3000 "	BARRIER ... .. 3000 "
COLAC ... .. 2000 "	FLINDERS ... .. 521 "	EMU ... .. 616 "
FRANKLIN ... .. 730 "	FERRET ... .. 445 "	INVESTIGATOR ... .. 584 "
ROB ROY ... .. 400 "	HERBERT ... .. 200 "	WAKEFIELD ... .. 150 "
BRINAWARR ... .. 114 "	MARY ... .. 140 "	MURIEL ... .. 108 "
ALBANY ... .. 1000 "	KAROO ... .. 300 "	

Lighters, Hulks, Tugs, &c.

## Passengers' Comfort Studied

And Steamers have Music Saloons, Social Halls, Smoking Rooms, and all Electrical and Modern Appliances.

### SPECIAL ATTENTION TO CUISINE.

Liberal attendance. Stewardesses in both classes.

**Coal and Coke** always on hand in hulks and yards, for all purposes.

**Gold.**—Special strong rooms are fitted in Express Liners.

**Ore.**—Special rates to Eastern Colonies and London.

**Pearl Shell and Wool.**—Through Rates to London.

**Stock.**—Specially fitted Steamers for Cattle, Sheep, Horses, Camels, &c.

**Cargo.**—Careful handling specially attended to by a competent staff.

Apply Local Agents, Coolgardie, Kalgoorlie, Perth, and all W.A. ports.  
MONGER'S W.A. STORES, LTD., Agents, Coolgardie and Kalgoorlie: FORREST, EMANUEL & Co., Agents, Perth; ADELAIDE STEAMSHIP COMPANY, LTD., Cliff Street, Fremantle.  
W. E. MOXON, Manager for W.A.



# NORTH-GERMAN LLOYD STEAMSHIP CO.

Regular Four-weekly Line of fast Passenger Steamers to Southampton, Antwerp, and Bremen, calling at Colombo, Aden, Suez, Port Said, Naples, and Genoa, under Mail Contract with the Imperial German Government.

## Steamers on the Australian Service:

BARBAROSSA	-	-	10,769 tons	FRIEDRICH der GROSSE	10,531 tons
KOENIGIN LUISE	-	-	10,566 "	BREMEN	- - - 10,525 "
PRINZ RT. LUITPOLD	-	-	6,288 "	WEIMAR	- - - 4,996 "
OLDENBURG	-	-	5,006 "	GERA	- - - 5,005 "
STUTT GART	-	-	5,048 "	KARLSRUHE	- - - 5,057 "

These magnificent and popular Mail Steamers berth at the River Wharf, Fremantle, sail for the Eastern Colonies at regular intervals of four weeks, and offer unsurpassed Passenger accommodation.

## PASSENGER FARES:

<b>From FREMANTLE to SOUTHAMPTON—</b>	<b>To MELBOURNE—</b>
£14 to £62. Return £24 10s. to £105.	Single First, £10; Second, £7; Third, £4 10s.
<b>To ADELAIDE—</b>	Return First, £15; Second, £10 10s.; Third, £7 5s.
Single First, £7; Second, £5 10s.; Third, £2 10s.	<b>To SYDNEY—</b>
Return First, £10 10s.; Second, £8 5s. Third, £4.	Single First, £12; Second, £9; Third, £5 10s.
	Return First, £18; Second, £13 10s. Third, £8 5s.

For Freight, Passage, and all other particulars apply to

**DIAMOND, SON & SAURMANN,**

AGENTS FOR W.A., CLIFF STREET, FREMANTLE.

AT PERTH TO—

H. G. BARKER, PRINCES BUILDINGS, ST. GEORGE'S TERRACE.

AT ALBANY TO—W. G. KNIGHT & SON.

# SANDS & McDOUGALL LTD.,



ARE NOW SHOWING DIRECT FROM LONDON

THE

## Newest Goods

IN THE FOLLOWING LINES:

PURSES  
CARD CASES  
CIGAR and  
CIGARETTE CASES  
WALLETS  
TOURIST CASES  
DRESSING CASES and  
TRAVELLING BAGS  
LADIES' COMPANIONS  
JEWEL CASES  
MANICURE SETS

AND A GREAT VARIETY OF

## Fancy Goods

OF ALL DESCRIPTIONS.

Inspection Invited.

448 Hay Street,  
PERTH.





# Monger's West Australian

Head Office:  
LONDON.

Chief Colonial Office:  
FREMANTLE.

Branches:  
COOLGARDIE, KALGOORLIE.

## Stores Limited.

**HARDWARE, IRON,**

**WINE, SPIRIT and GENERAL MERCHANTS.**

LARGE STOCKS of the following lines always on hand:—

Bar, Sheet and Plate Iron

Engineers' Furnishings

Steam Packing, Valves, Etc.

Builders' and Furnishing Hardware

Assay Apparatus and Chemicals, Etc.

See our Exhibit of Portable Railways, Trucks, Etc.

Sole Agents For:

HAIG & HAIG LIMITED, London, Scots' Whisky

JOHN GILLON & CO., Leith, Scotch Whisky

J. STONE & SONS, London, Bass' Ale and Guinness' Stout

THE TAUNUS SPRINGS, LIMITED, Royal Table Waters

ARTHUR KOPPEL, Berlin, Mining Trucks.

## MONGER'S WEST AUSTRALIAN STORES Ltd.

# STRELITZ BROS.,

**MOUATT STREET, FREMANTLE,**

AND AT

Perth, Coolgardie, Kalgoorlie, Menzies, Cue and Norseman,

**MERCHANTS and SHIPPING AGENTS.**

SOLE AGENTS FOR—

NOBEL'S HAMBURG DYNAMITE COMPANY  
ORENSTEIN & KOPPEL, Mining Machinery, Trucks, Rails, etc.  
RUD. MEYER, New Patent Rockdrills  
ALSEN'S, and HERCULES CEMENT (Govt. tests guaranteed)  
MANNESMANN WELDLESS TUBES  
STAR BRAND PATENT MANURES, etc., etc.

ALSO AGENTS FOR—

GERMAN-AUSTRALIAN S.S. CO.  
And Direct Line of Continental Sailors to W.A.

# HENDERSON & MACGEORGE LTD.,

Customs, Shipping, and General

Ship and Insurance Brokers

Produce and General Merchants

Indents Executed

Consignments Received.

All classes of Goods taken charge of in Ship's  
salings, Fremantle, and conveyed promptly to any  
part of the Western Australian Goldfields at  
Lowest Rates.

Agents—China Traders' Insurance Co., Ltd.  
Lion Fire Insurance Co., Ltd.

**Forwarding**

**Agents . .**

Registered Office—  
ADELAIDE.

Offices at—

COOLGARDIE,  
KALGOORLIE, and  
MENZIES.

Cliff Street, FREMANTLE.



# HENRY WILLS & CO.,

(Late Mofflin, Rickards & Co., Ltd.),

HEAD OFFICE - - - FREMANTLE.

Branches at Albany and Geraldton.

**CASH  
BUYERS**

Of Wool, Sheepskins, Hides, Kangaroo  
and Opossum Skins, Tallow, Horns,  
Beeswax, Shank Bones, Manna Gum,  
Horse and Cow Hair.

PROMPT CASH paid on receipt of Goods. Correspondence  
invited and all information given. Labels, Advice Notes, Etc.,  
sent Free of Cost to any address.

The Oldest Established and far and away the Largest Buyers in the colony

EXPERTS IN THE TRADE.

**HENRY WILLS & CO.,**

WOOL, SKIN AND HIDE MERCHANTS,  
FREMANTLE.



## Bolton & Sons,

The Fremantle Coachbuilders,

Have a Large Stock of Vehicles of every  
description For Sale, from splendid

Abbott Buggies to all kinds of Dog Carts,  
Sulkies, Spring Carts, Lorries and Drays.

**Best and Cheapest in W.A.**

A Large Stock of **Second-hand Vehicles**, Very Cheap, always on hand.  
We also have a Large Stock of Seasoned **Wheel Material**, and a Large Variety of  
**Ready Made Wheels**.

Every description of Vehicle made to order on the shortest notice.

Only try us and you will come again.

**BOLTON & SONS,**

63 HENRY STREET and WILLIAM STREET,  
FREMANTLE.

# F. E. RANDELL & Co.,

GROCERS, IRONMONGERS, AND GENERAL

WINE AND SPIRIT MERCHANTS,

**Customs and Forwarding Agents,**

HEAD OFFICE—

SYLVESTER STREET, COOLGARDIE.

BRANCHES—

COOLGARDIE, Ford Street

KALGOORLIE, Hannans Street

KALGOORLIE, Egan Street

MENZIES

NORSEMAN

AGENCIES—

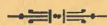
FREMANTLE

ADELAIDE.



# NOBEL'S EXPLOSIVES COMPANY LIMITED,

GLASGOW.



MANUFACTURERS OF

Gelignite, Dynamite, Gelatine-Dynamite,

Blasting Gelatine, Fuse,

Detonators, Appliances for Electrical

Blasting.



MAGAZINES—

COOLGARDIE, KALGOORLIE, MENZIES, DAY DAWN,

MOUNT MAGNET, FREMANTLE.



Agent for Western Australia :

**GEORGE SHENTON.**

FREMANTLE.

## PROSPECTUS

OF THE

# WEALTH & PROGRESS

OF

## WESTERN AUSTRALIA.



The Commissioners of the Western Australian International Mining and Industrial Exhibition having determined to publish a work as a Souvenir of the Enterprise to be entitled "The Wealth and Progress of Western Australia," which production will be under the direct patronage of the West Australian Government, beg to notify that the same will be issued in 1899.



NATURALLY such a work, dealing with the resources of the Colony, viz.—the Goldfields, the Pastoral, Agricultural and Timber areas, the Coal Measures, Pearl Fisheries, &c., will command



considerable attention, the more so as steps are being taken for an active canvass, as far as practicable, of the whole colony.

### ADVERTISERS

Will therefore find that this work will not only place them in direct communication with residents of Western Australia, but EASTERN COLONISTS. Inhabitants of Home and Foreign Countries will, doubtless, subscribe largely for the different editions.

In order to meet the views of all classes, it is proposed to issue the work in three forms:—

	s.	d.
<b>EDITION de LUXE</b> (beautifully bound, Photo Reproductions on Art Paper) ... ..	21	0
<b>CLOTH EDITION</b> (Photo Reproductions on Art Paper) ...	10	6
<b>POPULAR EDITION</b> (on Heavy White Paper) ... ..	5	0

### SUBSCRIBERS ORDERING

Copies are requested to forward name and address, legibly written, with a cash deposit for one half the amount.

### ON PUBLICATION

Each subscriber will be duly notified, when, on receipt of the balance, the work will be either posted or delivered.

### PICTORIAL ADVERTISEMENTS.

A limited number of these, beautifully produced on art paper, will be accepted, more especially those dealing with the resources of Western Australia. Two pages or more, each 10 x 8, can be allotted—the one for a picture or pictures, the other for corresponding letterpress—on payment of 25 guineas, one half cash, the balance on publication.

### ORDINARY ADVERTISEMENTS

Will be inserted for £12 12s. a page. It may confidently be expected that 25,000 copies at the least will be wanted to supply local requirements, but every effort will be made, by a systematic canvass, to ensure the largest circulation possible.

### SUBSCRIPTION LISTS

Are being opened up in the Eastern Colonies, at Home, and Abroad.

### PHOTOGRAPHS OF SUITABLE SUBJECTS

Can be submitted for approval.

### M. S. S.

May also be sent in dealing with one or more of the subjects mentioned, typewritten preferable, which, if accepted, will be paid for on publication, but no return of any manuscript can be guaranteed.

The Commissioners reserve to themselves the right to translate the works into foreign languages for circulation at the Paris L'Exposition of 1900.

The Editions will be copyrighted.

### THE PUBLISHING ARRANGEMENTS

Have been entrusted to the well-known firm of Messrs. E. S. Wigg & Son, of London, Adelaide, Broken Hill, and Perth; this fact alone will be a guarantee to the public of the efficient production of the work.

Pastoralists, Agriculturalists, Mine Managers, Heads of Mercantile Houses, Factories, etc., wishing to be represented in the Pictorial Pages are requested to address their correspondence to the Publishing Office, when in due course a photographer will be sent by appointment, free of charge.

N.B.—Any suggestions relative to the successful production of this memento of the Western Australian Mining and Industrial Exhibition will be thankfully received by the undersigned.

For the Commissioners,

**EDWARD DEARSLY GOULY.**

PUBLISHING AND EDITORIAL OFFICE OF THE

“WEALTH AND PROGRESS OF WESTERN AUSTRALIA,”

385 ST. GEORGE'S TERRACE, PERTH, W.A.



**SUBSCRIBER'S ORDER FORM.****"THE WEALTH & PROGRESS OF WESTERN AUSTRALIA."**

*To be published in 1899 by the Commissioners of the Western Australian Mining and Industrial Exhibition, under the direct patronage of the Western Australian Government.*

+X-----X+

To **E. D. GOULY,**

PUBLISHING OFFICE,  
385 ST. GEORGE'S TERRACE,  
PERTH, W.A.

Please forward to Mr. ....

..... cop..... of the above publication  
in No. .... form, and I here-  
with enclose the sum of .....  
being a deposit of one-half the amount, and I agree  
to pay the balance on notice of publication.

Name in full .....

Address .....

**PRICES:**

- No. 1 Edition de Luxe, 21s.  
,, 2 Cloth Edition, 10s. 6d.  
,, 3 Popular Edition, 5s.

**SIMPSON & CO.,****FREMANTLE*****Fruit and Vegetable Mart,*****HIGH STREET.****Choicest Dessert Fruits. Vegetables Fresh Daily.****PICNICS AND FRUIT SOIREES SUPPLIED.****Telephone No. 776.****THE PARK HOTEL,**

Well and healthily situated, opposite  
Fremantle Park, Bowling Green, and  
Lawn Tennis Courts. . . . .

**~ FREMANTLE.**

**Most Complete Accommodation as a  
Family and Residential Hotel.**

Within two minutes walk of East Fremantle  
Railway Station and Town Hall. . . . .

TELEPHONE No. 674

**Hot and Cold Baths.****J. AUGIER, Proprietor.****The Farmers'****Late—** South Coast and West Camden Co-operative Co., Ltd.

ESTABLISHED 1881.

RE-ORGANISED 1898.

Head Office:  
Sussex Street,  
Sydney.

**Co-operative**

Branches at—  
Newcastle, Wollongong  
and Orange.

Agents for the well-known **BERRY BUTTER.**

A1 Brands Ham and Bacon.

O.K. Brands Ham &amp; Bacon.

**Company**

The Company was Established by the Farmers to supply a long-felt want,  
and act as Agents in the interests of the Producer only. Annual Turn-  
over, £300,000.

**Of N.S.W. Ltd.****Produce Salesmen . . .****Live Stock Auctioneers.**

Farmers should Protect their own interests by Con-  
signing their Produce to a bona fide Farmers'  
Co-operative Institution.

Fremantle Depot—Leake Street.

H. H. MILLEN, Manager in W.A.



HIGHEST AWARDS AT THE WORLD'S EXHIBITIONS.  
GOLD MEDAL, ANTWERP.

## **W. H. BURFORD & SONS,**

**Soap and Candle Manufacturers,**  
**PERTH, WESTERN AUSTRALIA.**

For Purity and Excellence of Quality Unrivalled.



BURFORD'S "SIGNAL" SOAP  
BURFORD'S PRIZE NO. 1 SOAP  
BURFORD'S BORAX SOAP  
BURFORD'S ASSORTED TOILET SOAPS  
BURFORD'S SOFT SOAP  
BURFORD'S EXHIBITION CANDLES  
BURFORD'S BEDROOM SELF-FITTING  
CANDLES  
BURFORD'S SODA CRYSTALS  
BURFORD'S EXTRACT OF SOAP

TALLOW AND FAT PURCHASED IN ANY QUANTITY  
AT HIGHEST MARKET RATES.

## **THE GILL McDOWELL JARRAH CO. LTD.**

LONDON AND WESTERN AUSTRALIA,

LONDON OFFICE:  
110 Cannon Street, E.C.

PERTH OFFICE:  
246 Wellington Street.

**Jarrah Timber Merchants & Exporters,**

SAW MILLS:

**Eastern and South-Western Railways.**

Sawn, Hewn or Squared Baulks, any Lengths or Scantlings, Sawn or Squared  
Piles, Round Piles, Beams, Girders for Bridges, Wharves, and Railways,  
Railway Sleepers (sawn or hewn), Telegraph Poles, Etc.

**SAWN TIMBER FOR BUILDINGS, &c.**

All Lengths and Scantlings in Stock or Cut to Order; T. & G. and Dressed  
Flooring Boards, Feather Edge Weather Boards (dressed or rough);  
Mouldings, Architraves, Skirtings, &c., &c.

EVERY DESCRIPTION OF MINING TIMBER CUT.

**PAVING BLOCKS.**

**TIMBER CUT FOR EXPORT.**

**F. D. GOOD, Managing Director.**



# Glowrey's Royal Hotel,

BAYLEY STREET EAST, COOLGARDIE.

TELEPHONE No. 9.

J. T. GLOWREY, Proprietor.

A FAVORITE RESORT FOR MINING & COMMERCIAL MEN  
SUPERIOR ACCOMMODATION  
LARGE SAMPLE ROOMS  
CUISINE EQUAL TO THE BEST CONTINENTAL HOTELS  
ELECTRIC LIGHT THROUGHOUT  
WINES, SPIRITS, & CIGARS OF THE CHOICEST BRANDS  
OBTAINABLE  
HOT & COLD BATHS  
NIGHT PORTER IN ATTENDANCE

Please order Room by Letter or Telegram, which will  
receive prompt attention.

## RAWLING & ANDERSON,

TINWARE MANUFACTURERS,

Shop and Street Lamp Makers,

GALVANIZERS AND INCUBATOR MAKERS,

242 WILLIAM STREET, PERTH.

## BUNNING BROS. PERTH SAW MILLS.

Head Office and Mills: Corner of Wellington St. and Melbourne Rd., Perth.

JARRAH MILLS: DANDALUP.

LARGE STOCKS OF BALTIC DEALS, MATCHBOARDS AND FLOORING OF ALL SIZES  
ON HAND. JARRAH IN ALL SIZES.

Architraves, Skirtings, Facias and Mouldings of all kinds.

TURNERY OF ALL DESCRIPTIONS.

Bandsawing and Sawing and Planing done for the Trade.

THE BUILDING TRADE SUPPLIED.

Telephone 159.

## THE WESTERN AUSTRALIAN

INTERNATIONAL

# Mining & Industrial Exhibition

(INCORPORATED)

COOLGARDIE.

*Under the direct patronage of the Western Australian Government.*

### Patrons:

His Excellency the Governor Sir GERARD SMITH, K.C.M.G.  
The Right Hon. Sir JOHN FORREST, P.C., K.C.M.G., Premier.  
The Members of the W.A. MINISTRY.  
The Honorable E. H. WITTENOOM, Agent-General.

### PERTH:

ALEXANDER FORREST, Esq., M.L.A., Mayor.  
The Members of the City Council.  
Hon. Secretary—The Town Clerk, H. E. PETHERICK, Esq.

MR. JULES JOUBERT,

General Manager.

MR. GEO. WILLIAMS,

Secretary.

CAUTION.—This Catalogue has been COPYRIGHTED for the Exhibition  
Commissioners by Richard Sparrow, of Perth, Licensed Patents' Agent, and  
any infringements thereof will be rigorously prosecuted at law.

Printed by SANDS & McDougall Limited, 448 Hay Street, Perth, and published by  
order of the Commissioners at 385 St. George's Terrace, Perth, W.A.

E. D. GOULY.

21st MARCH, 1899.



# THE WESTERN AUSTRALIAN International Mining and Industrial Exhibition.

## *Executive Committee.*

A. E. MORGANS, CHAIRMAN. A. G. JENKINS, VICE-CHAIRMAN.

W. O. BARNIER, HON. TREASURER.

BARCLAY, A. H.	GLASSON, A.	RAINE, W. E.
COLLINS, W. F.	GRIFFITH, W.	READ, H. L.
COUNSEL, A.	HEWER, G.	THOMAS, A. E.
CRAZE, J. M.	JONES, E. P.	WILLIAMS, E.
COCHRANE, W. J.	LESCHEN, DR.	WYMOND, A. P.
DANIELL, W. L.	MONGER, A. J.	WREFORD, E. H.
FAAHAN, W. M.	MERCER, A.	WILSON, S.

## *Finance Committee.*

E. WILLIAMS, CHAIRMAN.

W. O. BARNIER, HON. TREASURER.

COCHRANE, W. J.	READ, H. L.
GLASSON, A.	WREFORD, E. H.

## *Foreign Relations Committee.*

H. L. READ, CHAIRMAN.

DANIELL, W. L.	RAINE, W. E.	WILLIAMS, E.
GRIFFITH, W.	THOMAS, A. E.	WREFORD, E. H.
	WILSON, S.	

## *Building Committee.*

FAAHAN, W. M.	WYMOND, A. P.
COLLINS, W. F.	WILSON, S.

## *General Purposes Committee.*

A. P. WYMOND, CHAIRMAN.

COUNSEL, A.	COLLINS, W. F.	MERCER, A.
COCHRANE, W. J.	HEWER, G.	RAINE, W. E.

## *Advertising and Printing Committee.*

W. E. RAINE, CHAIRMAN.

COUNSEL, A.	COLLINS, W. F.	WILLIAMS, E.
COCHRANE, W. J.	MERCER, A.	WYMOND, A. P.

## *Entertainment Committee.*

DR. LESCHEN, CHAIRMAN.

CRESSWELL, A. T. | FIEDLER, — | RAE, W. G. | ROSENTHAL, H. (away) | WEBSTER, P

## *Reception Committee.*

W. L. DANIELL, CHAIRMAN.

COCHRANE, W. J.	RAINE, W. E.	WILSON, S.
GLASSON, A.	READ, H. L.	WYMOND, A. P.
GRIFFITH, W.	WILLIAMS, E.	

## *Administrative Committee.*

COCHRANE, W. J.	MORGANS, A. E.	WILLIAMS, E.
DANIELL, W. L.	RAINE, W. E.	WYMOND, A. P.
LESCHEN, DR.	READ, H. L.	



## PROSPECTUS.

---

**I**T has been decided to hold an Exhibition in Coolgardie in 1899, and the Government of Western Australia has been pleased to recognise the undertaking, and to substantially support it by a money and land grant.

The proposal has been warmly taken up by the people of Western Australia, by whom, through their public institutions, an Executive Commission has been elected to carry it out, and to hold in trust for them the lands, buildings, and appurtenances remaining after the close of the Exhibition, for the purposes of a School of Mines and Technical Institute.

The movement to hold an Exhibition had its origin in the Coolgardie Mine Managers' Institute; the arguments advanced in its favor resting primarily on the necessity of securing a more rapid and successful development of the colony's mineral resources by practical trials of ore reducing and gold-saving machinery on the goldfields, *e.g.*, under the practical working conditions that exist thereon.

In other words the original proposition put forward by the Mine Managers, and endorsed by the Workers' Association, was to hold a Mining Machinery Exhibition, and to open same on October 1st, 1897.

But the idea caught on so warmly, and was responded to so freely by manufacturers all over the world, that it was found to be absolutely necessary to fix upon a much later date, and in order to render the movement national, it was finally decided to make it as comprehensive as possible, and to place it under the direction of an Executive Commission elected by the districts of the colony.

The objects of the Exhibition are to test the suitability of machines to local requirements; to promote and foster Industry, Science, and Art; to encourage invention; and to stimulate commerce.



Care will be taken to secure the finest characteristic exhibits of the productions of Western Australia, including Minerals, Food Staples, Timbers, etc. The Governments of the other Australian Colonies have also been asked to prepare and furnish exhibits, similarly representative, while varied collections are assured from Great Britain, America, Canada, the Continent of Europe, the Cape and India.

The site which has been granted by the Western Australian Government for exhibition purposes covers about 15 acres at the eastern end of Bayley and Woodward Streets, and is especially well situated, being adjacent to the railway line, from which a siding will be constructed into the grounds, thus obviating the carriage of exhibits.

The buildings which it is proposed to erect will be constructed according to plans prepared by a firm of competent architects.

It is intended to afford full postal, telephonic, and telegraphic facilities within the Exhibition Buildings, so that the Exhibitors may be enabled to conduct their business on the premises.

The whole arrangements are in the hands of an Executive Committee, and everything will be done to facilitate the work of Exhibitors, and to minimise their outlay and their labors.

N.B.—The offices of the Western Australian International Mining and Industrial Exhibition are at the Exhibition Buildings, Bayley Street, Coolgardie.

The cable address: *International*, Coolgardie.

Cable codes: *Reuter's*,

*A.B.C.*, 4th Edition.

*Moreing & McCutcheon*.

*Broomhall*.

*Bedford McNeill*.



NESTLE'S MILK—Richest in Cream.

## WESTERN AUSTRALIAN International Mining and Industrial Exhibition,

COOLGARDIE, 1899.

### Exhibition By-Laws.

#### I.—OFFICERS AND EMPLOYEES.

1. Every person employed under the Directors must, except in cases of special arrangement, be prepared to devote himself exclusively to their service, paying prompt obedience to the orders of those who are placed in authority over him, and conforming to all such rules and regulations as may from time to time be made by the Directors.

2. The regular hours of attendance at the Offices are: During the Exhibition, from 9 a.m. to 5 p.m., and 7 to 10.30 p.m., and all persons engaged therein will be required to sign an attendance book, showing the times of their arrival at, and departure from, the Offices; but all officers and servants must attend for the performance of such duties as may be required of them at such hours as may from time to time be necessary.

3. The private address of each officer or servant must be registered at the office of the Secretary, in order that, if required for duty at any other time than the regulation hours of attendance, he can be found.

4. All officers and servants must be prompt, civil, and obliging. They must at all times afford every facility for the conduct of business, and shall not communicate any business of the Directors unless specially directed so to do.

5. Each officer or servant will be held responsible for the particular work entrusted to him, and for the proper keeping by any subordinates who may be placed under him of all records, books, accounts, etc., connected with such work; and each officer responsible for any paper or document must initial the same.

Harper's Star "Avena," for Porridge.

YANKEE DOODLE TOBACCO.



**NESTLE'S VIKING MILK**—Unsweetened, through its superior quality superseding all other brands.

Dixson's No. 1 CIGARETTES ARE Absolutely Pure.

6. Any officer or servant being unable to attend to his duties through ill-health or any other cause must at once advise the Secretary to that effect in writing. If the cause be ill-health, and the consequent absence be likely to extend over one day, he must forward to the Secretary, if required, a medical certificate, stating the cause of his absence. Neglect of attention to this rule will subject any officer or servant to the penalty of being dealt with for absenting himself without leave. Leave of absence from duty must be applied for, in all cases, through the Secretary to the General Purposes Committee, or, in his absence, the officer acting. A record shall be kept of all cases where leave of absence is granted.

7. Every attendant or servant is engaged during the pleasure of the Executive, and is not entitled to any gratuity, compensation, or allowance on departure or dismissal from their service, neither shall he have any claim to salary or wages during absence from duty.

8. Insobriety, insubordination, or grave irregularity on the part of any person employed by the Directors will be followed by immediate suspension, and may, if the Executive think fit, result in dismissal.

9. The acceptance of any bribe, or favor of any kind, is strictly forbidden, and if proven to have taken place, be followed by immediate dismissal.

10. In case of any officer or servant having to complain of the conduct or irregularity of any fellow officer or servant, such complaint must be made within forty-eight hours of the time of its coming to the knowledge of the person complaining. Any complaint lodged after that period has lapsed, unless good grounds can be shown for the delay, will be treated as being frivolous, and not as for the benefit of the service.

11. No officer or servant shall leave the service of the Directors without giving, in writing, to the secretary at least one week's notice from the next ensuing Saturday of his intention to do so, under penalty of forfeiting any salary or wages that may be due to him at the time of leaving. (This rule does not apply to those under special agreement).

12. No officer or servant who has been dismissed from the service of the Directors for insobriety, inattention to duty, insubordination, or other grave irregularity, will be eligible for any subsequent appointment under the Directors, or for employment in the Exhibition buildings or grounds in any position or capacity whatever.

13. Any officer or servant having any cause of complaint, or making application for increase of salary, must render the same in writing to the Secretary, who shall forward the same to the proper Committee for consideration. Personal application to the Executive will be treated as a breach of discipline, and dealt with accordingly.

14. Under the direction from the Executive, the Secretary shall define the duties of all officers and servants.

15. Officers or servants may be required to find reasonable security for their fidelity and the due performance of their duties, and no officer or servant will be considered to have entered the service of the Directors until he shall have furnished the required security, whereupon he will receive a copy of those Regulations, and will be required to give a receipt for them in a book kept for that purpose.

Silver "Star" Baking Powder.

**GLOBE CANNED MEATS**—Renowned for their excellent flavour and Superior Quality.

## II.—BUILDINGS AND GROUNDS.

16. Unless authorised by the Executive, no one shall enter the Exhibition buildings, gardens, or grounds. The admission fee to the Exhibition buildings, gardens, and grounds shall be such sum as the Directors may deem advisable, during such hours and on such days as they may decide that the buildings and grounds may be kept open for the admission of the public.

17. No person visiting or walking through the gardens or grounds shall walk elsewhere than on the footpaths.

18. No person shall remove or damage any of the seats, lamps, trees, shrubs, grass, flowers, statuary, fountains, aquaria, fish, or birds, or any material or property in the above-named buildings, gardens, or grounds; and no person shall throw stones or other missiles, or smoke except in certain places set apart for that purpose, or light fires therein, or leave bottles, orange-peel, paper, litter, or refuse of any kind.

19. No person shall enter the Exhibition buildings, gardens, or grounds otherwise than by the public gates, or climb or jump over the seats or fences in and around the said Exhibition buildings, gardens and grounds, or lie on the seats, or stick bills on the fences or on the gates, or cut names, letters, or marks on the trees, seats, gates, posts, or fences, or otherwise deface the same, or write, print, stick, or distribute, or scatter bills therein.

20. No person shall bring into the Exhibition buildings, gardens, or grounds any horse, dog, or other animal, or any vehicle, except by special permission of the Executive.

21. No child under seven years of age shall be allowed in the Exhibition buildings, gardens, or grounds, unless in charge of an adult.

22. Any persons found in the Exhibition buildings, gardens, or grounds in a state of intoxication, or behaving in a disorderly manner, or creating or taking part in any disturbance, or committing in the said buildings, gardens, or grounds any act of indecency, or damaging the buildings, or any part thereof, shall be expelled from the said buildings, gardens, or grounds, and may be forthwith removed therefrom by any Director, or by anyone authorised by a Director, or anyone in the employ of the Directors, or by any constable; and any such person shall also be liable to prosecution for a breach of these Regulations.

23. No persons except artisans, laborers, or workmen employed in the gardens or grounds shall enter any plots which may be enclosed within the said gardens or grounds, and then only in such plots as they may be employed in.

24. Any person who gains admission to the Exhibition buildings, gardens or grounds otherwise than as herein provided, or being in does not observe these Rules and Regulations shall be liable to be forthwith removed from the said buildings, gardens, and grounds, and also be prosecuted as for a breach of the Rules and Regulations as the Act directs.

25. In the case of machinery in motion, or other exhibits which, in the opinion of the Executive, may be attended with danger to the public, exhibitors shall give a written guarantee indemnifying the Directors against any liability which may be incurred on account of any accident or injury of any kind arising therefrom.

YANKEE DOODLE TOBACCO.

Agents, Robert Harper & Co. Proprietary Ltd., Fremantle.



**KANDY KOOLA TEA**—Is the Best Value, Superior Flavour, Strength  
and Quality.

**Dixon's No. 1 CIGARETTES ARE Absolutely Pure.**

10

26. Exhibitors may erect railings round their stands, subject to approval of the Executive. In every instance these railings must be within the area of the space allotted. In the case of machinery in motion, it is imperative that it be effectually protected to the satisfaction of the Executive.

27. No exhibitor will be permitted to display exhibits in such a manner as to obstruct the light or impede the view along the open spaces, or to occasion injury or inconvenience to other exhibitors.

28. Sign or name boards can only be placed with the sanction of the Executive, and must in no case interfere with the lighting, or project on avenues or passages.

29. All handbills, printed matter, etc., connected with exhibits, and intended for gratuitous distribution, must first receive the approval and permission of the Executive, which permission may be withdrawn at any time.

30. Exhibitors will be required to provide all necessary attendance to keep their stands and exhibits properly cleaned and in good order, free from shavings, paper, or litter of any description, during the whole period of the Exhibition.

31. The Directors reserve the right to move the exhibit of any one who does not conform to the Regulations.

### III.—FIRE AND SANITARY.

32. No canvas or calico linings shall be allowed in any part of the Exhibition buildings, either as screens, ceilings, or for any other purpose; provided always that in certain cases, if it shall appear to them necessary, the Executive may grant special permission. But that, in such cases, the lining shall be previously saturated with alum, or such other non-inflammable preparation as the Executive may approve.

33. No movable gas brackets or other portable appliances for lighting shall be used in the Exhibition buildings.

34. All artificial light, except that created by ordinary coal gas, or electricity, shall be prohibited, except in cases where it may be permitted by the Executive under such restrictions as they may in the said cases adopt.

35. No artificial heat shall be applied to any oleaginous or inflammable substances; neither shall any exhibitor, employee, or any person visiting the Exhibition, light or introduce any fire into any part of the buildings, unless when necessary for carrying out the works, or when otherwise authorised by the Executive as a necessary part of machinery or other exhibits, and under such further regulations as may be adopted in such cases.

36. No shavings, straw, paper, packing, etc., or any inflammable material shall be allowed to remain in the buildings, gardens, or grounds.

37. No person shall light or assist in lighting any match, paper, wood, straw, or any other combustible material in the Exhibition buildings, gardens, or grounds except by the permission of the Executive; and any person who is found using any lighted pipe or open light in the buildings, gardens, or grounds shall be liable to prosecution for a breach of this Regulation.

**"Star" Brand Pure White Pepper.**

11

**JONES' No. 1 TASMANIAN JAMS**—For Quality and Assortment they  
have an Unbeaten Record.

38. Refuse shall only be placed at the appointed places, and must be removed daily.

39. The chief executive officer in every court must take every precaution necessary to prevent fire, theft, or a breach of Sanitary Regulations within his court.

40. Places will be provided in different parts of the buildings for the purposes of public convenience, and no person is permitted to use any other place; and if any one is found offending he will be liable to be permanently excluded from the buildings, gardens, or grounds, and, in addition, to be prosecuted for a breach of these Regulations.

41. All Employees of the Association are required to prevent any breach of these Regulations.

### IV.—CUSTOMS REGULATIONS.

*Regulations under Section 356 of the Customs Act.*

1. The buildings and annexes in Bayley-street, Coolgardie, known as the Exhibition, are hereby constituted a Bonding Warehouse for the deposit of goods for exhibition only, without payment of duty.

2. The General Manager shall execute a bond for the security of full duties upon goods for exhibition.

3. An office, with suitable accommodation for the Customs Officer in charge and his assistants, shall be provided. A set of books shall be opened by such officer for the purpose of recording exhibits, and for such other purposes as the Collector of Customs may deem necessary.

4. Exhibits shall be entered for the Exhibition Bond, Coolgardie, on arrival at the port of landing, and shall be marked with the letters W.A.E. if landed at Fremantle, and W.A.E. if landed at Albany, and numbered, commencing at No. 1 for each port, and proceeding in numerical order according to the packages are landed and entered; they shall then be forwarded, under bond, to the Exhibition Building, where invoices, in duplicate, must be presented to the Customs Officer, giving full description of the goods and the market values at the port of shipment, and where the goods must be unpacked in the presence of the Customs Officer, who will compare the goods with invoices, and otherwise examine them as may be required by the Customs Act, and after the goods have been checked with such invoices, a copy shall be retained by the Customs Officer until the close of the Exhibition. To facilitate examination, foreign invoices should, when practicable, be made out in the English language, and in no case will goods be allowed to be unpacked until invoices in duplicate have been produced to the Customs Officer.

5. Duty must be paid or satisfactory security given for such duty on all goods liable to duty intended for sale, and in no case will goods for sale be allowed to be exhibited until full duties or ample security for them shall have been received by the Customs Officer in charge.

**Agents, Robert Harper & Co. Proprietary Ltd., Fremantle.**

**YANKEE DOODLE TOBACCO.**



**KANDY KOOLA TEA**—The most powerful recommendation is that the Consumption in Western Australia was doubled during 1898.

Dixon's No 1 CIGARETTES ARE Absolutely Pure.

6. Jewellery of every description, watches, and plate shall be conveyed to some secure place in the building, for safe custody, on their arrival, and, unless duty is paid, all such articles as described above shall be shown under cases locked and sealed with the Customs seal, and any such article being found exhibited, without having been first examined by an Officer of Customs, shall be forfeited.

7. Wines, spirits, beer, or other beverages, tobacco and cigars entered for exhibit must be secured in a portion of the building set apart for that purpose under the Crown lock, samples of which may be exhibited in show case under the Crown lock, one key of which show case the exhibitor will hold. Full duty on any portion of the above-named goods required for sale in the building must be paid before delivery. Reasonable samples, as required by these persons appointed to judge exhibits of wines, spirits, beer, and other beverages, tobacco and cigars, will be allowed without payment of duty.

8. When goods for exhibition only are shown in cases, duplicate keys shall be provided; one for the owner of the goods, the other to be held by the Officer of Customs.

9. The Customs Officer in charge, together with his assistants, shall have free access at all times to the Exhibition buildings and its annexes.

10. Immediately after the closing of the Exhibition, exhibitors or their agents must deal with all goods to the entire satisfaction of the Collector of Customs. Any goods not cleared within fourteen days after the closing of the Exhibition may be removed to a bonding warehouse at the owner's or exhibitor's risk and expense.

11. Customs entries to clear shall be passed, and all charges for marking packages, receiving, and unpacking goods, and other expenses which may be incurred, must be paid by the exhibitors or their agents before the removal of the goods.

12. No goods whatever will be allowed to be removed from the Exhibition before its close without a permit from the Customs Officer in charge, and any person found removing or attempting to remove any exhibit or portion thereof, without first obtaining such permit, will be liable to prosecution under the Customs Act.

13. Invoices shall not necessarily be accepted as the sole basis of arriving at the values of goods, but shall be subject to the usual examination of goods upon importation.

#### V.—JUDGING REGULATIONS.

1. No exhibit will be allowed to compete for awards which is not placed in the Exhibition building on or before the 15th March, 1899, unless the exhibitor is able to prove to the satisfaction of the Directors that the delay in its arrival has been due to causes arising subsequently to its despatch from its place of origin and entirely beyond his own control. Perishable articles are alone exempted from this rule.

Empire Baking Powder,  $\frac{1}{4}$ ,  $\frac{1}{2}$  and 1lb Tins.

**KANDY KOOLA TEA**—Obtainable Everywhere.

2. The classification of articles for competition shall follow the schedule as published in the Official Catalogue, but the Directors shall have power to amalgamate or subdivide classes if necessity should arise.

3. A separate jury, consisting of not less than three members, shall be appointed for each section.

4. One of the Jurors in each section shall be elected by the exhibitors, and one by the Directors; the third juror shall then be appointed by the two already elected; any additional juror shall be appointed by the Directors. No person shall be eligible for appointment as a juror in any section in which he exhibits, unless he withdraws from the competition.

5. Exhibitors will be invited to appear, either personally or by representative, in the jury room, on dates to be notified, for the purpose of electing jurors. The names of exhibitors will be read out by the Secretary, and each exhibitor or his representative will be at liberty to nominate a juror on his name being called. Where there is a majority of votes in favor of one person he shall be considered duly elected. When an equal number of votes has been given to two or more persons, the Directors shall appoint the one they deem best qualified. Where no nominations are received, the Directors themselves shall make all appointments.

6. Each juror shall receive a pass that will admit him to the Exhibition buildings during the duration of the judging of the section he is appointed for.

7. In the event of the non-attendance of any juror at two meetings in succession, or any juror declining to act, the Directors shall, on the requisition of a majority of the remaining jurors, or of not less than five exhibitors in the section being judged, appoint a substitute.

8. Notice of the time of meetings of the several juries shall be given by the Secretary at least twenty-four hours in advance. Exhibitors may be invited to attend meetings of the juries in their own sections for the purpose of giving information as to their exhibits, if deemed necessary by the jurors. If they omit to attend they must bear the consequence of any want of explanation to the jurors regarding any article.

9. The jurors in each section shall choose their own Chairman, who shall convene meetings, preside over debates, and enter the propositions and resolutions of the jury, together with the reasons for the same, in the minute book. He shall have a deliberative as well as a casting vote, and shall also certify, under his signature, the award of the jury.

10. Jurors shall have the power to invite the co-operation of jurors from other sections, but such persons shall have no voting power.

11. The names of all persons called in to co-operate with jurors shall be recorded in the minutes of meetings of each jury, and such minutes shall be submitted by the Chairman to the Directors.

12. Juries may, if they consider it necessary, sub-divide classes into special divisions, and make awards in each of the sub-divisions thus created.

13. Collective exhibits shall, as a rule, be judged as one exhibit; should, however, an exhibitor so desire, and supply the jury with due notice and the necessary information, his exhibit shall be divided, and parts judged separately; but no exhibit, to any part or parts of which an award of merit may be given, shall be eligible for a reward as a collective exhibit.

YANKEE DOODLE TOBACCO.

Agents, Robert Harper & Co. Proprietary Ltd., Fremantle.



**GLOBE MEATS—Cheaper and Better than much of the fresh meat obtainable.**

**Dixson's No. 1 CIGARETTES ARE Absolutely Pure.**

14. Each jury shall submit to the Directors a signed report, embodying the results of their examination of exhibits, and stating the specific reasons for which each award is made.

15. Reports and awards shall be based upon inherent and comparative merit, the elements of merit being held to include considerations relating to originality, invention, discovery, utility, quality, skill, workmanship, fitness for the purposes intended, adaptation to public wants, economy and cost. Exhibitors shall be at liberty to supply the jurors with a statement in writing of the merits which they claim for the articles exhibited by them.

16. The reports of jurors shall name the exhibitors who deserve recognition and shall recommend whether the awards made to them shall be of the first, second, or third class. Jurors shall limit themselves to placing exhibits in classes, and shall not decide as to the comparative merits of articles in the same class.

17. An exhibitor may appeal against any award made by a jury in his section; such appeal to be lodged with the Secretary within 48 hours of the publication of the juror's awards in any one of the West Australian papers, and to be accompanied by a sum of £2, which shall in no case be returned. These payments shall form a special fund for the remunerating of experts called in to give evidence to the Directors.

18. When an exhibitor has made a *prima facie* case for the re-examination of his exhibits, the Directors may request the jury to re-examine the exhibit, or order such re-examination to be made by an expert; and on a report being made by such jury or expert, the Directors may, if they see fit, alter the award appealed against. The decision of the Directors on any question connected with awards shall be final.

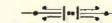
19. If any question shall arise as to the interpretation of any of these regulations, the decision of such question shall rest solely with the Directors.

20. The Directors shall have power to amend or add to these regulations should necessity arise.



ASK FOR GLOBE BRAND OF MEATS & INSIST ON GETTING THEM.

## CLASSIFICATION OF EXHIBITS.



*The following are the Headings of the Classification.*

- GROUP I.—Mining and Mining Machinery.
- „ II.—Mining and Metallurgy, Minerals, Quarrying and Fuel.
- „ III.—Fine Arts (including Photography, Engravings, &c.)
- „ IV.—Chemistry, Apparatus and Processes, Philosophical Instruments.
- „ V.—Electricity.
- „ VI.—Gas and Lighting, other than Electricity.
- „ VII.—Heating and Cooking Apparatus.
- „ VIII.—Cutlery, Ironmongery, Firearms, Military Weapons.
- „ IX.—Road Carriages, Bicycles, Tricycles, Ambulance.
- „ X.—Machinery, Machine Tools, Hydraulic Machines, and Machines  
for raising heavy weights, Elements of Machines, Furnaces.
- „ XI.—Prime Movers, and means of distributing their power, Railway  
Plant.
- „ XII.—Civil Engineering, Construction and Architecture, Sanitary  
Appliances, Aeronautics, &c.
- „ XIII.—Women's Industries.
- „ XIV.—Timbers.
- „ XV.—Condensers and Filters.
- „ XVI.—Fermented and Spirituous Liquors, &c.
- „ XVII.—Food Products.

YANKEE DOODLE TOBACCO.

Harper's "Oriental" Coffee—A luxury.



JONES' No. 1 TASMANIAN JAMS—PRESTON & COMPANY, Fremantle, Agents.

GROUP I.

MINING AND MINING MACHINERY.

- Class.
1. Rock Drills, Boring Machines, Air Compressors.
  2. Mining Tools, Safety Cages, Safety Hooks, Ropes, Pumping and Winding Plants, Belting.
  3. Electric Firing Machines, Fuse, Caps, Explosives.
  4. Motive Power, Steam, Gas, and Oil Engines.
  5. Train Waggon, Tram Rails, Wire Tramways, Trucks.
  6. Ventilation, Fans, Blowers.
  7. Signalling Apparatus, Telephones, Signals.
  8. Ore-reducing Machines, Rock-breakers, Stamp Batteries, Ball Mills, Wet and Dry Crushers, Stamp Heads and Dies.
  9. Concentrators, Tables, Vanners, Jiggers, Screens.
  10. Amalgamators, Tables, Barrels.
  11. Gold-saving, Cyanide, Chlorination and other Processes.
  12. Dry Blowers.
  13. Metal-saving Appliances, other than Gold.

GROUP II.

MINING AND METALLURGY, MINERALS, QUARRYING, AND FUEL.

- Class.
14. Coal—Anthracite and bituminous, with samples showing thickness of seam; bitumen, kerosene, and other oil shales, pressed coal and coke.
  15. Building and other Stone—Rough, hewn, sawn, or polished stones, white, black or coloured marbles, granite and other ornamental stones in blocks or slabs, lithographic stones, hones, grindstones, whetstones.
  16. Iron, Lead, Copper Ore, etc.—Iron ores, copper and lead ores.
  17. Pig Iron, Wrought Iron and Steel—Iron and steel in pig, ingots, bars; tin, zinc, antimony, bismuth, brass, gun metal.
  18. Gold, Silver, Platinum—Samples of reef and alluvial gold and silver ores, gems and precious stones, collections of minerals.
  19. Assaying.

N.B.—Machinery and appliances used in the production or manufacture of the above will be placed in the Machinery Section.

GROUP III.

FINE ARTS.

- Class.
20. Sculpture.
  21. Oil Paintings.
  22. Water Color Drawings.
  23. Etchings and Engravings.
  24. Works in Black and White.
  25. Architectural Drawings.
  26. Photographs.
  27. Archaeology.
  28. Philately.

Pioneer Table Jellies—best in the World.

JONES' No. 1 JAMS—The best Jam that Money can Buy, see that you get JONES' No. 1.

GROUP IV.

CHEMISTRY AND APPARATUS, PROCESSES AND APPLIANCES CONNECTED WITH APPLIED CHEMISTRY AND PHYSICS: PHILOSOPHICAL INSTRUMENTS AND APPARATUS.

- Class.
29. Inorganic Products, Acids, and Alkalies—Mineral, sulphuric, nitric, hydrochloric acids, ammonia and other alkalies, potassium, sodium, magnesium, printing and writing inks, bleaching agents, salts, white lead, paints and pigments, phosphorous, sulphur, selenium, bromine, iodine, kelp, charcoal, disinfectants, yeast and baking powders.
  30. Organic Products, Coal and Wood, Tar Products, Oils, Soaps, Varnishes—Creosote, wood spirit, pyroligneous acids, oils from mineral, animal, and vegetable sources; refined oils, lubricating oils, candles, soaps, and detergents; varnishes, resins, dyes and colours, yellow, red prussiate of potash, Prussian blue, cyanide of potassium.
  31. Chemical Apparatus—Chemical apparatus of all kinds, balances, scales and graduated beams, laboratory fittings and instruments and apparatus.
  32. Pharmaceutical Products—Including perfumes of all kinds.
  33. Optical Apparatus—Optical and thermotic instruments and apparatus, lenses and prisms, spectacles and eye-glasses, field and opera glasses.
  34. Instruments (except Naval)—Astronomical instruments and accessories, transits, equatorials, etc.; instruments for surveying, levelling instruments and apparatus, meteorological instruments, thermometers, barometers, hygrometers, rain gauges, maps, weather bulletins, mathematical machines, calculating machines, viameters, pedometers, weights, measures, and weighing machines, biological instruments, spectroscopes and accessories for spectrum analysis.
  35. Photographic Apparatus—Processes, gelatine, bromide, plate making, printing processes, silver, carbon, woodbury-type, platinotype, etc., cameras, shutters, changing boxes, slides, tents, lamps, etc.

GROUP V.

ELECTRICITY.

- Class.
36. Generators—Dynamos, primary and secondary batteries, thermo electric battery.
  37. Conductors—Submarine cables and apparatus for laying them, aerial wires and underground cables, insulators and poles, insulating and coating materials, joints and connections, pipes, tubes, troughs, electric light leads.
  38. Testing and Measuring Apparatus—Galvanometers, magnetometers, dynamometers, voltmeters, current meters.
  39. Telegraphic and Telephonic Apparatus—Needle instruments, ABC instruments, sound instruments, Morse instruments, type printers, relays, duplex and quadruplex apparatus, keys, recording instruments, automatic transmitters, electric bells, indicators, telephones and fittings, microphones, lightningconductors and protectors.

Agents, Robert Harper & Co. Proprietary Ltd., Fremantle.



**GLOBE MEATS—PRESTON & COMPANY, Fremantle, Agents.**

40. Electric Lighting Apparatus—Lamps, resistance coils, cutouts, safety catches, switches, fittings for lamps.
41. Distribution or Utilisation of Power—Electric railways, electric motors, tricycles and other conveyances driven by electricity, systems of distribution, domestic electric lighting applied to apartments.
42. Electric Signalling—Fire and burglar alarm, railway, ship, and time-tables, water level and wind indicators, tell-tales, electric clocks and chronoscopes.
43. Electro-Thermic Apparatus.

**GROUP VI.**

**GAS AND LIGHTING (OTHER THAN ELECTRICITY).**

- Class.
44. Coal and other Gas—Manufacture, purification, storage, and distillation of coal gas, treatment of residue, water gas, oil gas, carburetted air.
  45. Tests and Photometrical Apparatus—Chemical tests, standards of light, measurement of lights.
  46. Candle Holders and fittings of all kinds.
  47. Lamps for Oil and Spirits—Lamps for burning oil, safety lamps, firemen's lamps, railway lamps.

**GROUP VII.**

**HEATING AND COOKING APPARATUS.**

- Class.
48. Stoves for Coal, Gas, or Oil, Grates, Ranges, Heating Apparatus, etc.,
  49. Cooking and Pantry Utensils—Tinware and enamelware, used in cooking and storing food.

**GROUP VIII.**

**CUTLERY AND IRONMONGERY, FIREARMS, MILITARY WEAPONS.**

- Class.
50. Cutlery and hand-tools—Hand-tools and instruments of every description used by artificers, cutlery for table use, knives, pen-knives, scissors, razors, and implements sold by cutlers.
  51. Surgical Instruments and Appliances.
  52. Hardware and Hollow-ware—Metal hollow-ware, screws, nails, spikes, bolts, locks and latches, hinges, pulleys for house fittings, window and door furniture, plumbers' and gasfitters' hardware, ships' hardware, saddlers' hardware, harness fittings.
  53. Galvanised ironwork and wirework.
  54. Pewter and Britannia Metal, German Silver, Nicholwares, Bronze, Solder.

**NESTLE'S SWISS MILK—Through its Superior Quality has obtained the Largest Sale in the World.**

55. Ordnance, Small Arms and Weapons, also Sporting Guns—Heavy guns and Means of working them, gun carriages and accessories, siege, field, and mountain guns, machine and automatic guns, shell and shot, fuses and detonators, guns, rifles and pistols, swords, bayonets, gunpowder and ammunition.
56. Fire-proof Safes.

**GROUP IX.**

**ROAD CARRIAGES, BICYCLES, TRICYCLES, AMBULANCE.**

- Class.
57. Road Carriages and Accessories—Pleasure and travelling carriages, cabs, omnibuses, hearses, trucks and carts, carriage lamps, carriage fittings, methods and means of propulsion, perambulators.
  58. Bicycles, Tricycles, and Accessories—Cycles of every description, and fittings for same.
  59. Saddlery and Harness—Horse clothing, whips, spurs, means and methods of breaking in horses, disengaging appliances for runaway horses, horse shoes, method of roughing horses, horse clippers, grooming apparatus.
  60. Ambulance—Ambulance carriages, stretchers, aid to sick and wounded in peace, furniture and fittings for sick-room, bath chairs.

**GROUP X.**

**MACHINERY, MACHINE TOOLS, HYDRAULIC MACHINES, AND MACHINES FOR RAISING WEIGHTS, ELEMENTS OF MACHINES, FURNACES.**

- Class.
61. Metal-working Machines — Machines for planing, drilling, slotting, turning, shaping, boring, punching, stamping and cutting metal; wheel-cutting and dividing machines; emery wheels, drills, gauges and dies.
  62. Steam Hammers—Steam, trip, and other hammers, anvils, forges, bellows.
  63. Wood-working Machines — Machines for planing, sawing, turning, veneering, and grooving; machines for tongueing, cutting, moulding, stamping, carving, cask-making, cask-cutting.
  64. Stone-working Machines — Machines for sawing, planing, dressing, shaping, and polishing stones; sand blast, grindstones.



**VIKING UNSWEETENED MILK**—Noted for its extreme richness, Purity and Excellent Keeping Qualities.

Dixson's No. 1 CIGARETTES ARE Absolutely Pure.

67. Machinery used in the Manufacture of Glass and Pottery.—Bricks, pottery, drain-pipes, tiles, and artificial stone machines, furnaces, moulds, and blow-pipes for making glass and glassware; machines for grinding, cutting, and polishing glass.
68. Cranes and Other Lifting Apparatus, Hydraulic Machines and Presses—Pumps and apparatus for lifting and moving liquids (air or gas), blowers and ventilators, hydraulic engines, accumulators, cranes, jacks, presses, elevators, lifts, pile-driving machines.
69. Baking and Machinery.—Bread and biscuit or pie machinery of all kinds.
70. Machines for the Manufacture of Aerated Waters.—Machinery of all kinds for the manufacture of soda and aerated waters, bottling and corking apparatus, ice-making machines.
71. Fire Engines and Fire Apparatus—Steam fire engines, hand, chemical, compressed air fire engines, hose, ladders, fire escapes.
72. Weighing Machines for Commercial Purposes—Beam and scale machines, machines for weighing trucks and carts, weighing machines of all kinds (other than chemical and other scientific balances).
73. Furnaces for Manufacturing Purposes.—Furnaces and moulding machines, bloom squeezers, blowing fans, apparatus for casting metal, Bessemer, Siemens-Martin, and other processes.
74. Machines and Apparatus for Chemical Manufactures.—Electro-plating, paint and powder mills, soap and candle-making machinery, plant for manufacturing sulphuric and other acids.

#### GROUP XI.

#### PRIME MOVERS AND MEANS OF DISTRIBUTING THEIR POWER, RAILWAY PLANT.

Class.

75. Steam Engines and Boilers—Boilers, fixed and portable steam engines, methods and means of preventing corrosion and incrustation.
76. Gas and Hot Air Engines, Compressed Air Engines—Gas engines, hot air engines, air compressors, compressed air engines, vapour engines.
77. Turbines, Water-wheels, Hydraulic Rams, Wind-mills—Means of utilising wave power, hydraulic rams, water pressure engines, windmills, solar engines.
78. Means of Transmitting Power and Accessories of Engines and Boilers—Beltting, pulleys, shafts, gearing, clutches, fire feeders, smoke consuming apparatus, valves and valve gear, steam joints, governors, injectors, pumps, bearings, lubricators, indicators, gauges.
79. Rails, Switches, Signalling Apparatus for Rails or Tramways—Crossings, turntables, communications in trams and with trams, modes of water supply, signals and points, fixed and rolling stock for tramways.
80. Brakes, Hand and Automatic—Screw, chain, compressed air, vacuum, steam, electrical.
81. Atmospheric Railways and Portable Railways—Rope railways and tramways, pneumatic railways.

Glen Ewin Jams.

**GLOBE CANNED MEATS**—Command the largest Sale in the Colony.

65. Washing Machines—Machines for washing, scouring, ironing, drying, cleaning, and dyeing.
66. Printing Machinery—Type-casting machines, and apparatus for stereotyping and electro-typing; type-setting, printing, stamping, embossing, and lithographic machines; book-binding machines, paper-folding machines, paper and card-cutting machines, paper-box machines, envelope machines, wall-paper printing machines, steel pen and pencil machines.

#### GROUP XII.

#### CONSTRUCTION AND ARCHITECTURE, SANITARY APPLIANCES, ÆRONAUTICS.

Class.

82. House Construction and Building Materials (other than Stone)—Fire-proof structures, materials for sanitary house construction, roofs, walls, damp courses, solid floors, cements, damp-proof wall coverings.
83. Water Supply and Sewerage—Meters, filters, water fittings, house drains, their construction and ventilation, water and earth closets, ventilators, lavatories, baths, and bath fittings.

#### GROUP XIII.

#### WOMEN'S INDUSTRY.

Class.

84. Needlework and Knitting—Plain needlework, ladies' and children's under-clothing, white embroidery on muslin and linen, plain knitting, fancy knitting, art embroidery.
85. Mechanical Work—Straw and basket work, brush making, filigree work, feather dressing, spinning, glove making, flower making, toy making, fishing tackle and fly dressing, bookbinding.
86. Decorative Work and Furnishings, Carving on Wood, etc.—Wall decorations, curtains, furniture, screens, carved, fret or painted work, brass work.
87. Painting, Drawing and Engraving—Painting on fabrics, china, glass, missal painting, Christmas card and fan painting, wood and steel engraving, lithography, designs for wall and floor coverings, designs for art embroidery, etc.

#### GROUP XIV.

#### TIMBERS.

Class.

88. Building Timber—Dressed.
89. Ornamental Timbers.
90. Mining Timber.

Agents, Robert Harper & Co. Proprietary Ltd., Fremantle.

YANKEE DOODLE TOBACCO.



NESTLE'S VIKING UNSWEETENED MILK—Is the popular unsweetened throughout the Colony.

# GROUP XY.

## CONDENSERS AND FILTERS.

- Class.  
91. Condensers to be only of sufficient size to show the merits of same.

# GROUP XVI.

## FERMENTED AND SPIRITUOUS LIQUORS, ETC.

- Class.  
92. Wines and Spirits—Home and Foreign.  
93. Beers—Home and Foreign.  
94. Liqueurs.  
95. Cordials.  
96. Aerated Waters.  
97. Mineral Waters.

# GROUP XVII.

## FOOD PRODUCTS.

- Class.  
98. Tinned Meats, Chilled Meats, Tinned Fruits, Preserved Milk.  
99. Preserves.  
100. Farinaceous Foods.  
101. Tea, Coffee, Cocoa, Chocolate, etc.

Harper's "Oriental" Coffee—A luxury.

## INDEX TO ADVERTISEMENTS.

C stands for Coolgardie  
K " " Kalgoorlie  
N " " Northam  
S A " " South Australia  
G " " Germany

F stands for Fremantle  
E F " " East Fremantle  
P " " Perth.  
N S W " " New South Wales  
S W " " Bunbury, &c.

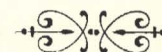
	PAGE.
C—Acme Cycle Depot (D. Lorimer, Proprietor) ...	xxxviii.
F—Adams & Co., G. H., General Merchants ...	Back inside cover
F—Adelaide Steamship Co. (W. E. Moxon, Manager) ...	i.
C—Allen, Stanley & Co., Assayers and Metallurgists ...	xxxviii.
C—Alves, John, General Carrier ...	xxxvii.
P—Armstrong, George Edward, Chemist, Hay Street, opposite Arcade ...	xlvi.
K—Australian Gold Recovery Co., Ltd. (Vincent F. Shallcross) ...	xxxiv
C—Bank of New South Wales (W. O. Birnie, Manager) ...	G
C—Barrett, H. E., Sharebroker; cable address after June 30, "Complex," Coolgardie ...	P
P—Blackwood & Bryson, General Merchants ...	xxi.
F—Bolton & Sons, Carriage Builders, &c. ...	vi.
C—Borough Council of Coolgardie ...	i
C—Bow Bros., Forwarding and Carrying Agents... ..	E
C—Britton, Thomas, Melbourne Café ...	xxxvi.
C—Brown & Williams, Signwriters and Decorators ...	xxxviii.
P—Bunning Bros., Perth Saw Mills ...	xvi.
C—Bunsell & Co., Boot and Shoe Manufacturers ...	xxxii.
P—Burford & Sons, Soap Manufacturers ...	xiv.
C—Burbanks Birthday Gift Gold Mine, Ltd.—Consulting Mining Engineer and Attorney: William Nicholas, Esq., F.G.S. (London), Coolgardie, W.A. 35 and o	
C—Cawthray, M.P.S., R.D.S., Chemist and Druggist. Hon. Surgeon Dentist to the Coolgardie Hospital ...	P
S A—Chateau Tanunda Brandy (The Adelaide Wine Co., Ltd.) ...	xxi.
P—Commercial Bank of Australia, Ltd. (W. H. Thomas, Manager) ...	xxiv.
C—Court House, The, Coolgardie ...	N
C—Coolgardie Hardware Co. (W. Baird, Manager) ...	xxxviii.
C—Cosson & McKenzie, Merchant Tailors ...	Lines 13 to 17
C—Counsel & Co., A., General Storekeepers ...	H
P—Criterion Shirt (Sontag & Tavernay), Gloves... ..	xxx.
P—Danby, Butler & Co., Accountants, Auditors, &c. ...	xxxiii.
P—Department of Agriculture ...	xxx.
P—Devenish, H. A., Ceylon Tea and Coffee Merchant ...	xx.
C—Distillers' Import Co. (A. M. Paterson, Manager) ...	Line 3
F—Dixson's Cigarettes ...	Line advertisements throughout.
P—Dobbie & Co., A. W., Manufacturers and Importers ...	xliv.
C—English and American Cycle Agency (H. Murray, Proprietor) ...	xxxvii.
P—Equitable Life Assurance Society of the U.S. (G. H. Johnston, Local Manager) ...	xxii.

Dixson's No. 1 CIGARETTES ARE Absolutely Pure.



	PAGE.
F—Farmers' Co-operative Co. of N.S.W., Ltd. (H. H. Millen, Manager) ...	xiii.
P—Faulding & Co., Wholesale Druggists ...	F
P—Felton, Grimwade & Co., Wholesale Druggists ...	39
K—Frazer & Chalmers, Ltd., Mining Machinery ...	xxix.
NSW—Freeman & Wallace, Doctors, Sydney, N.S.W. ...	xlvi.
P—Gill McDowell Jarrah Co., Ltd. (F. D. Good, Manager) ...	xv.
C—Glowrey, John T., Proprietor, Royal Hotel ...	xvi.
C—Goldfields Cycle Co., Limited (E. T. Hore, Manager) ...	xxxix.
P—Gouly & Son, Advertising Agents ...	G
P—Greenham & Evans, Photographers ...	A
F—Harper, Robert & Co., Proprietary, Limited, Cliff Street, Fremantle ...	Lines 18 to 67
F—Henderson & McGeorge, Forwarding Agents ...	v.
F—Herring, L. L., Customs, Forwarding and Baggage Agent ...	xl.
P—Holmes & Co., R., General Merchants ...	D
P—Jacoby's Hotel "Bohemia," Murray Street ...	L
SW—Jarrah, Imperial Wood Corporation, Ltd., Bunbury. F. O. Benckendorff, Secretary ...	lii.
K—Kalgoorlie Brewery ...	M
C—Kingsbury, George J., Condenser and Tank Maker ...	xxxviii.
G—Krupp, Friedr. Grusonwerk, Magdeburg-Buckan (Germany) ...	J
K—Kyle, A. and J., Undertakers, &c. ...	xxxviii.
F—Lysaght—"Orb" Corrugated Iron, "Queen's Head" Special Flat Sheets. M. D. H. Williams, Manager ...	xliv.
C—McCormick, A. P., Builder and Contractor ...	Line 2
F—McHenry, Clark & Co. ...	Front inside cover
P—McLean Bros. & Rigg, Wholesale Ironmongers ...	xxii.
P—Matheson & Co., Alex., Melville Park Estate ...	Front cover
—Memoranda ...	liv., lv., lvi.
P—Milne & Co., Wine and Spirit Merchants ...	xix.
F—Monger's West Australian Stores ...	iv.
P—Morning Herald, Perth ...	Outside edge of cover
P—Mutual Life Association (Edward W. Manby, Secretary) ...	xxxiv.
P—National Mutual Life Association (Secretary, Hy. Wright) ...	xxvi.
P—New Zealand Fire and Marine Insurance Co. (Edward Pretty, Manager) ...	xxiii.
P—Nicholson and Co., Music Publishers and Importers of Musical Instruments ...	Front cover
F—Nobel's Explosives (Geo. Shenton) ...	viii.
F—North German Lloyds (Diamond, Son & Saurmann) ...	ii.
G—Orenstein & Koppel, Ltd., Berlin ...	xlvi.
F—Park Hotel, E. Fremantle (J. Augier, Proprietor) ...	xiii.
P—Peacock & Co., Leather Merchants, &c. ...	xxxix.
P—Pector & Ducout, Jne., Merchants and Indentors (Leon Gibus, Representative) ...	xv.
C—Perth Charity Fête and Gifts Distribution (Gouly & Son, Agents for Coolgardie and Kalgoorlie) ...	xxxix.
F—Preston & Co., H., Merchants ...	Lines 5, 7, 9, 11, 13 to 108
SW—Prosser, W., Tannery and Boot Manufacturing Co., Bunbury ...	li.
F—Randell & Co., Merchants and Forwarding Agents ...	vii.

	PAGE.
P—Rawling & Anderson, Tinware Manufacturers ...	xvi.
P—Robertson & Moffat, Complete House Furnishers ...	xviii.
K—Robertson & Zowe, Restaurateurs ...	Lines 8 to 12
C—Robinson & Higgins, Wine and Beer Bottlers, &c. ...	M
C—Robinson & Luce, Plumbers, &c. ...	xxxvii.
SW—Rose Hotel, Bunbury. J. C. Illingworth, Proprietor ...	liii.
F—Russell, Denny & Co., Merchants, Engineers and General Agents ...	xli., xlv.
F—Sadleir & Co., Customs, Forwarding and Baggage Agents ...	xxxviii.
P—Saltwell, F. E., Wine and Spirit Merchant ...	xix.
P—Sands & McDougall Ltd., Printers of the Official Catalogue ...	iii., xlv.
P—Sandover & Co., W., General Merchants ...	xxviii.
P—Saunders & Co., H. J., Mining, Land and Financial Agents ...	xxvii.
C—Silverthorne & Adair, Machinery Merchants, &c. ...	xxxv.
F—Simpson & Co., Fruit and Vegetable Merchants ...	xiii.
P—Sparrow, Richard, International Patents Agent to the Commissioners ...	xxiv.
N—Standard Steam Saw Mills (John Sermon, Proprietor) ...	xxxix.
C—Stanwix, H., Consulting Engineer to the W.A. International Mining and Industrial Exhibition ...	xxxv.
C—Stodart & Co., T., Auctioneers, Land and Mining Agents ...	xxxvii.
P—Stott & Hoare, Remington Typewriters ...	xxii.
F—Strelitz Bros., General Merchants and Shipping Agents ...	v.
F—Strelitz Bros., Nobel's Hamburg Dynamite Co. ...	31
P—Taylor Bros., Manufacturers ...	xliv.
P—Tillie & Henderson, White Shirts ...	Lines 4, 6, 8, 10, 12
C—Tivoli Restaurant (Geo. Seyler) ...	xxxvi.
C—Transport, Trading and Agency Co. of W.A., Limited ...	xxx.
C—United Club Hotel (Mrs. Stellwag) ...	E
P—Vitadatio (S. A. Palmer) ...	B and C
SW—Wallis, E., Bunbury Bottling Works ...	L
P—Wealth and Progress of Western Australia, Prospectus of (Publishing Office, 385 St. George's Terrace, Perth, W.A.) ...	ix., x., xi., xii.
P—West Australian and Western Mail Newspapers ...	xlii.
P—Western Australian Bank (H. J. Holmes, General Manager) ...	xxv.
N—West Australian Wines (C. Kelso) ...	xxxix.
P—White & Co., D., Coachbuilders ...	xxi.
P—Wigg & Son, E. S., Printers, Stationers and Booksellers ...	xliii.
F—Wills & Co., H., Wool, Skin and Hide Merchants ...	vi.
P—Williamson, A. F., Electrical Engineer to the Exhibition ...	xvii.
F—Williams, W. F., Tailor ...	Line 1
P—Wilson & Co., The Paris House ...	Lines 1 to 7
N—Withnell, H. & H., Engineering, General Blacksmiths and Wheelwrights ...	x





W. F. WILLIAMS, TAILOR, 60 Market Street, Fremantle Opened  
March 1, 1899.

---

## GROUP I. MINING AND MINING MACHINERY.

---

### CLASS 1.

*Rock drills and accessories.*—Patent piston rings for air compressors and steam engines.

1. TAYLOR HORSFIELD, Long Gully, Bendigo, Victoria.

*Little Hercules rock drill.*

1. BENNIE, TEARE & CO., Woodward Street, Coolgardie.  
Edward J. Bahen, Manager; H. L. Gill, Engineer.

*Rock drills, compound air compressors, mining requisites and supplies.*

1. THOMPSON & CO., Castlemaine, Victoria. Attorney: Donald Mackenzie, Coolgardie.

*Rock drill steel.*—Octagon and Cruciform, different qualities.

1. THOS. FIRTH & SONS, LTD., Norfolk Works, Sheffield. H. Watson Williams, Essex Street, Fremantle, Agent.
- 

### CLASS 2.

*Various mining tools.*—Safety hooks; steel wire ropes; Tangye's winding engine, 10in. x 15in. double cylinder, with two loose drums, wood lagged. Various horizontal and vertical Tangye steam pumps. Various Belting.

1. BENNIE, TEARE & CO., Woodward Street, Coolgardie.  
Ed. J. Bahen, Manager; H. L. Gill, Engineer.
- 

THE PARIS HOUSE (next Sandover's) for the Acme of Fashion and the  
Cream of Perfection, 483 Hay Street.

YANKEE DOODLE TOBACCO.



A. P. McCORMICK, Builder and Contractor, Shaw Street. Estimates given for all branches in the trade.

## CLASS 3.

*Patent safety fuse for mining and military purposes.*

1. BICKFORD, SMITH & CO., 170 Punt Road, Prahran, Victoria.
2. NOBEL'S HAMBURG DYNAMITE CO., LTD. Explosives.

*Nitro-glycerine explosives, detonators, fuse, &c.—in model form.*

1. NOBEL'S EXPLOSIVE CO., LTD., Glasgow, per George Shenton, agent, Fremantle.

## CLASS 4.

*One marshall 10 N.H.P. portable engine.*

*One marshall 12 N.H.P. portable engine—with link reversing gear.*

1. A. F. WILLIAMSON, 84 William Street, Perth

*Tangye's 10in. x 20in. horizontal steam engine, with feed pump and quick speed governor.*

*Tangye's 6½in. x 7½in. vertical steam engine, with feed pump and quick speed governor*

*Tangye's 6½in. x 7½in. "Soho" engine, with feed pump and quick speed governor.*

*Tangye 3in. quick speed governor.*

*Tangye's oil engine, 6 brake horse power.*

1. BENNIE, TEARE & CO., Woodward Street, Coolgardie. Edward J. Bahen, Manager. H. L. Gill, Engineer.

## CLASS 5.

*Side tip trucks—one 10 cubic feet, one 16 cubic feet, one 20 cubic feet, by McLachlan, of Darlington, England.*

1. BENNIE, TEARE & CO., Woodward Street, Coolgardie. Edward J. Bahen, Manager. H. L. Gill, Engineer.

Dixon's No. 1 CIGARETTES ARE Absolutely Pure.

THE PARIS HOUSE (next Sandover's) for Gentlemen's Dress Requirements, 483 Hay Street.

# Nobel's Hamburg Dynamite Co.,

## LIMITED.

Owners of the Oldest Factory where Dynamite has been invented in 1865.

CONTRACTORS TO HOME, FOREIGN AND W.A. GOVERNMENTS.

High-Class Explosives of greatest chemical purity and of maximum strength, according to British Government Regulations, made from carefully selected Raw Materials by trained workmen, under the supervision of Expert Chemists.

Every ingredient is manufactured at the Company's own works, which comprise the largest Nitro-Glycerine Works on the Continent.

Sulphuric-Acid and Nitric-Acid factories.

Nitro-Cotton, Collodion-Cotton and Gun-Cotton factories.

Smokeless Powder factory.

Distilleries of Dynamite-Glycerine and Chemically pure Glycerine.

## SPECIALITY—

NOBLE'S GELATINOUS EXPLOSIVES, viz:

DYNAMITE

GELATINE-DYNAMITE

GELIGNITE

BLASTING-GELATINE

Detonators and Fuse of First-Class Quality.

Magazines in Western Australia at—

FREMANTLE, COOLGARDIE, KALGOORLIE,

MENZIES, CUE, NORSEMAN, Etc.

Sole Representatives:

# STRELITZ BROS.

Head Office: MOUATT ST., FREMANTLE.

Branches at—

PERTH

COOLGARDIE

KALGOORLIE

MENZIES

CUE

NORSEMAN



**DISTILLERS IMPORT COY.,** Woodward Street, Coolgardie.  
**ANDREW M. PATERSON, Manager.** Every Liquor in Stock.

## CLASS 6.

*Electric motor ventilating fans*—from One-twelfth h.p. upwards.

1. A. F. WILLIAMSON, 84 William Street, Perth.

## CLASS 7.

*Telephones and telephonettes*—specially suitable for mining purposes.  
*Signal Bells.*

1. A. F. WILLIAMSON, 84 William Street, Perth.

## CLASS 8.

*Battery screens or gratings.*

1. JOHN GOYNE, Epsom, Victoria.

*Battery shoes and dies of forged steel.*

*Cast steel chuck shoe for battery.*

*Cast steel cam for battery.*

*Cast steel tappet for battery.*

*Cast steel head for battery.*

*Cast steel jaw for stone crusher.*

*Worn shoes and dies of Firth special steel.*

1. THOS. FIRTH & SONS, LTD., Sheffield. H. Watson Williams, Essex Street, Fremantle, Agent.

*Direct acting steam stamp mill.*—For prospecting purposes, in full operation.

1. THE NEW STEAM STAMP MILL SYNDICATE, LTD., (per Charles Madam, Director), Crowther Street, Salford, Manchester, England, and King Street Chambers, Coolgardie.

*Ore Crusher*, hand or power, by Grindrod & Carter, Melbourne.  
 Various stamp heads and dies.

1. BENNIE, TEARE & CO., Woodward Street, Coolgardie.  
 Edward J. Bahen, Manager; H. L. Gill, Engineer.

**THE PARIS HOUSE** (next Sandovers), The Leaders of Fashion,  
 483 Hay Street.

**TILLIE & HENDERSON'S WHITE SHIRTS** give comfort and satisfaction  
 to all. Ask your Storekeeper for them.

## CLASS 9.

*Various battery screens*, punched and wove wire.

1. BENNIE, TEARE & CO., Woodward Street, Coolgardie.  
 Edward J. Bahen, Manager; H. L. Gill, Engineer.

## GROUP II.

## MINING AND METALLURGY, MINERALS, QUARRYING AND FUEL.

## CLASS 16.

*Plumbago*, otherwise known as graphite or black lead. This forms the chief mineral product of Ceylon. 24,000 tons were exported in 1898.

1. PLANTERS' ASSOCIATION OF CEYLON, Kandy, Ceylon.

*Ores.*

1. WESTERN AUSTRALIAN SMELTING CO., LTD., Owens Anchorage, Fremantle, per E. F. Cooke.

## CLASS 17.

*Steel fractures.*—Showing quality of material, &c.

1. THOS. FIRTH & SONS, LTD., Norfolk Works, Sheffield.  
 H. Watson Williams, Essex Street, Fremantle, Agent.

**THE PARIS HOUSE** (next Sandovers) Importers of Best Quality Goods  
 Only, 483 Hay Street.

YANKEE DOODLE TOBACCO.

Dixson's No. 1 CIGARETTES ARE Absolutely Pure.



# NESTLE'S SWISS MILK—One Quality—only the Best.

## CLASS 18.

*Collection of minerals.*—Consisting of Murchison gold and copper, Irwin coal, Northampton lead and copper ores.

1. HENRY ARTHUR SPALDING, Representative of the Murchison Goldfields, and surrounding Districts, Geraldton.

*Mining specimens, models, plans and photos.*—Of mine and plant.

1. ASSOCIATED GOLD MINES, LTD., Kalgoorlie, W.A. W. A. Irwin, Manager.

*Model of "C" main shaft steel poppet legs.* (Scale, 10 feet=1 inch.) This represents the actual amount of gold taken from the Burbanks Birthday Gift Gold Mines, Limited.

*Gold Pyramid* representing the yield of gold of the Burbanks Birthday Gift Gold Mine up to date. Samples of vein stuff, quartz (auriferous). Photographs of the mine historical of the progress of the mine. Plans and sections of the underground workings and developments.

1. THE BURBANKS BIRTHDAY GIFT GOLD MINES, LTD., Coolgardie. Board of Directors: Edward T. Read, Esq., F.R.G.S. (chairman); Benno Seimert, Esq.; J. C. Jesson, Esq.; the Hon. Howard Speneley; Fred. De La Fontaine Williams, Esq. Bankers: Union Bank of Australia. Secretary: Alfred H. Oxenford, Esq., London. Auditors: Messrs. Ball, Baker, Deed Cornish & Co., London, E.C. Consulting Mining Engineer and Attorney: William Nicholas, Esq., F.G.S. (London), Coolgardie, W.A.

## CLASS 19A.

*Medal press. Commemoration medals.*

1. A. MORAN, 242 Smith Street, Collingwood, Victoria.

THE PARIS HOUSE (next Sandover's) for Woodrow's Hats and all Specialties. 483 Hay Street.

## ADVERTISEMENT.

# Burbanks Birthday Gift Gold Mines, Ltd.

## DIRECTORS:

EDWARD T. READ, F.R.G.S. (CHAIRMAN); BENNO SEIMERT, Esq.; THE HON. HOWARD SPENSELEY; J. C. JESSON, Esq.; FREDK. DE LA FONTAINE WILLIAMS, Esq.

## SECRETARY:

ALFRED H. OXENFORD, Esq.

## CONSULTING MINING ENGINEER AND ATTORNEY, COOLGARDIE:

WILLIAM NICHOLAS, F.G.S. (LONDON).

THE Mine was discovered by E. J. Burbank in the latter part of 1893. There are within it two main lines of reefs, each of which forms a broken "saddle" formed reef. The Jesson reef forms the eastern leg of the southern one, and the Western reef its western leg. The Hadfield main reef forms the western leg of the other, and the Parallel reef forms its eastern leg. Profitable gold-bearing quartz is being taken from each reef down to the No. 3 or 180ft. level, and the "C" main shaft has been sunk to 320ft., and a level is now started to be driven from the 300ft. cross-cut on the Hadfield reef. The "B" main shaft is now being sunk. When it reaches a depth of 320ft. a level will be driven on the Jesson reef at 300ft. to meet that coming south on the Hadfield reef. Other reefs exist in the mine, viz., the Dam reef, the Lady Robinson reef and others unnamed. The reefs below the water level are in extremely hard rock (see samples exhibited), which makes the mining work very costly, even with the aid of rock-drilling machinery. The mine is the most extensively opened up in the Coolgardie proper district. Main shafts have been sunk 698ft.; levels driven 5,500ft.; cross-cuts, 1,150ft. Total, with winzes and small shafts, 9,356ft., or nearly 2 miles of work underground. There are 20 stamp heads at work and 10 erecting, a cyanide plant, air compressing plant and seven engines. The total output of gold is over 40,000ozs., equal roughly to 1 ton 5 cwt. of gold. This mine is paying dividends.

## Burbanks North Gold Mine, Limited.

This mine adjoins the Burbanks Birthday mine on the north. The Hadfield reef has been followed by the 90ft. level in the Burbanks Birthday mine right up to the Burbanks North boundary, and there connected with the levels in the latter named mine. Near and on the boundary several slides or faults disordered the reef above the 90ft. level. The main shaft of the Burbanks North mine is now being sunk and has attained a depth of 200ft. It is anticipated that the Hadfield reef will be cut in this shaft at about 260ft. in depth. A winding engine and good poppet legs are erected and at work, while an air-compressing plant capable of driving nine rock drills, will shortly be erected to facilitate the rapid development of the mine. A quartz crushing battery of 10 heads of stamps has recently been purchased.

## Burbanks Main Lode, Limited,

Adjoins the Burbanks North mine on the north boundary of the latter. The main shaft on the mine has been sunk to a depth of 167ft. At 150ft. a plat was cut, and levels north and south have been driven about 300ft. in length, approximately 150ft. each way, and for the most part in profitable gold-bearing reef averaging 18in. in width. A winding engine and tall poppet legs are erected and at work. The erection of a six rock drill air-compressing plant is now nearly completed, and soon the levels by its aid will be more rapidly pushed ahead and the shaft sunk to open out at the 250ft. level preliminary to the erection of a crushing battery, the site for which is now being prepared.



TILLIE & HENDERSON'S WHITE SHIRTS give comfort and satisfaction to all. Ask your Storekeeper for them.

### GROUP III.

#### FINE ARTS.

##### CLASS 21.

*Chrysanthemums. The Young Violinist. Almond Blossom—Roses. Pink and White Gum Blossoms. Roses.*

1. JEAN L. WILSON, Central Art Studio, Widows' Fund Building, Grenfell Street, Adelaide, South Australia.

*Geraniums.*

1. ROSE McPHERSON, No. 12 A.M.P. Buildings, King William Street, Adelaide, South Australia.

##### CLASS 22.

*4 Water colour sketches of Albany wild flowers.*

1. W. C. THOMAS, Albany.

##### CLASS 25.

*Drawings, photos., and diagrams of machinery.*

1. FRIED. KRUPP & CO., Essen, Germany, per Bewick, Moreing & Co., Coolgardie.

*Photos. of Mills, and other mining machinery.*

1. THE SANDYCROFT FOUNDRY AND ENGINEERING WOKKS, per Bewick, Moreing & Co., Coolgardie.

##### CLASS 26.

*Photos. and diagrams of machinery.*

1. DAVEY, PAXMAN & CO., Colchester, England, per Bewick, Moreing & Co., Coolgardie.

THE PARIS HOUSE (next Sandover's) for Welsh Margetson's Shirts, Collars and Ties, 483 Hay Street.

NESTLE'S SWISS MILK—PRESTON & COMPANY, Fremantle, Agents.

##### CLASS 26.—(CONTINUED.)

*Photographs of steel forgings and steel castings.*

1. THOS. FIRTH & SONS, LTD., Norfolk Works, Sheffield. H. Watson Williams, Essex Street, Fremantle, Agent.

*Collection of photos.,—illustrative of various processes of tea manufacture.*

1. PLANTERS' ASSOCIATION OF CEYLON, Kandy, Ceylon.

*Photographs, exhibited in York Court.*

1. T. G. WALKER, York, W.A.

### GROUP IV.

#### CHEMISTRY AND APPARATUS, &c.

##### CLASS 29.

*Acids and alkalies, disinfectants, assay materials, flavoring essences and cordials, baking powders, &c.*

1. F. H. FAULDING & CO., Murray Street, Perth. J. F. Skewes, Agent.

*Insulating paints.*

1. E. RICH & CO., LTD., Sydney, N.S.W. J. M. Ferguson, Ltd., Agents.

##### CLASS 30.

*Patent medicines.*

1. HERR RASSMUSSEN, Bayley Street, Coolgardie.

THE PARIS HOUSE (next Sandover's) for Men's Mercery and Hosiery, 483 Hay Street.

Dixon's No. 1 CIGARETTES ARE Absolutely Pure.

YANKEE DOODLE TOBACCO.



**TILLIE & HENDERSON'S WHITE SHIRTS** give comfort and satisfaction to all. Ask your Storekeeper for them.

*Bar soaps. Extract of soap. Soda crystals. Mining and household candles.*

H. MARSH & CO., South Street, Fremantle. Attorney: H. D. McCallum.

*Oils, and other products, viz.: Cocoanut, citronella, castor, cinnamon, kekuna-mi. Of these cocoanut and citronella oils only are exported in any quantity.*

1. PLANTERS' ASSOCIATION OF CEYLON, Kandy, Ceylon.

*Sandal wood oil, Eucalyptus oil, Benzine, Boiler fluid.*

1. KNOOP & CO., 27 Adelaide Street, Fremantle.

#### CLASS 31.

*Chemical apparatus, balances, scales, laboratory fittings, instruments and apparatus.*

1. F. H. FAULDING & CO., Murray Street, Perth. J. F. Skewes, Agent.

*Pharmaceutical products, including perfumery.*

1. F. H. FAULDING & CO., Murray Street, Perth. J. F. Skewes, Agent.

#### CLASS 32.

*Salvitis.*—Specialists in the production of medical and chemical compounds required in the pastoral, dairying, stud and allied industries.

1. THE LIVE STOCK AILMENTS REMEDY PROPRIETARY, LTD. R. H. Robinson, Agent, Coolgardie.

*Pharmaceutical products.*

1. FELTON, GRIMWADE & CO., Perth. T. Cuthbert, Manager.

NOTICE.—Visitors to Kalgoorlie, be sure and visit Maison Doree for Meals and Beds. Board and Residence, 35s.—Robertson & Zowe, Proprietors.

## FELTON, GRIMWADE & CO.,

### HAVE FULL AND COMPLETE STOCKS OF

CYANIDE OF POTASS., 98/100% . . . . .	MERCURY . . . . .
CYANIDE OF SODA, 105% . . . . .	LEAD GRANULATED . . . . .
CAUSTIC SODA, 71% . . . . .	ZINC SHAVINGS . . . . .
SODIUM . . . . .	LITHARGE . . . . .
CHLORIDE OF LIME, 35% . . . . .	BROMINE . . . . .
PERMANGANATE OF POTASS. . . . .	CALCINED BORAX . . . . .
BONEASH . . . . .	BORAX GLASS . . . . .

### MANUFACTURERS OF . . . . .

MINERAL ACIDS, LIQUID AND ANHYDROUS AMMONIA,  
AND FINE CHEMICALS.

Assay List, New Edition, fully illustrated, Post Free, 1s. 3d.

*Chemical and Assay Balances, all grades. Microscopes, and all Accessories, on exhibition.*

### PROPRIETORS OF . . . . .

KRUSE'S FLUID MAGNESIA and INSECT POWDER,  
. . . . . TOXO . . . . .

SOLE AGENTS FOR BOSISTO'S EUCALYPTUS OIL.

## FELTON, GRIMWADE & CO.,

342-346 FLINDERS LANE, 334-336 MURRAY STREET,  
MELBOURNE. PERTH.



**NESTLES VIKING MILK**—Unsweetened, through its superior quality superseding all other brands.

## CLASS 35.

*Dark rooms for photographing purposes.*

1. E. RICH & CO, LTD., Sydney, N.S.W. J. M. Ferguson, Ltd., Agents.

## GROUP V.

## ELECTRICITY.

## CLASS 36.

*Dynamos, for Arc and Incandescent lighting and for the transmission of power.*

1. A. F. WILLIAMSON, 84 William Street, Perth.

## CLASS 37.

*Insulated wires and cables up to 12,000 megotems, insulators leading in tubes, insulating material and connections.*

1. A. F. WILLIAMSON, 84 William Street, Perth.

*P. and B. insulating papers. P. and B. electrical compound. P. and B. motor cloths.*

1. E. RICH & CO., LTD., 24-60 O'Connell Street, Sydney, N.S.W. J. R. Reid, Secretary.

*General insulating and coating materials for telegraph, telephones, electric lighting, and power transmissions.*

1. E. RICH & CO., LTD., Sydney, N.S.W. J. M. Ferguson, Ltd., Agents.

Remember the **MAISON DOREE**, next Palace Hotel, is absolutely the best house in Kalgoorlie for Board and Residence. Meals, 1s. 6d.

**TILLIE & HENDERSON'S WHITE SHIRTS** give comfort and satisfaction to all. Ask your Storekeeper for them.

## CLASS 38.

*Voltmeters, Ammeters, and Testing Instruments.*

1. A. F. WILLIAMSON, 84 William Street, Perth.

## CLASS 39.

*Telephones, telephonettes, electric bells, indicators and fittings.*

1. A. F. WILLIAMSON, 84 William Street, Perth.

## CLASS 40.

*Lamps, &c.*—Jandus' long burning arc lamps, Crompton & Seemen's arc lamps, incandescent lamps, lampholders, switches and fittings.

1. A. F. WILLIAMSON, 84 William Street, Perth.

## CLASS 41.

*Distribution of electric power to motors, domestic house lighting and series, and parallel arc lighting.*

1. A. F. WILLIAMSON, 84 William Street, Perth.

## GROUP VI.

## GAS AND LIGHTING (OTHER THAN ELECTRICITY.)

## CLASS 47.

*Wells industrial and other lamps.*

- BENNIE, TEARE & CO.**, Woodward Street, Coolgardie. Edward J. Bahen, Manager. H. L. Gill, Engineer.

**NOTICE.**—Visitors to Kalgoorlie, be sure and visit **Maison Doree** for Meals and Beds Board and Residence, 35s.—Robertson & Zowe, Proprietors.

Dixson's No 1 CIGARETTES ARE Absolutely Pure.

YANKEE DOODLE TOBACCO.



NESTLE'S MILK—Richest in Cream.

### GROUP VIII.

#### CUTLERY AND IRONMONGERY, FIREARMS, &c.

##### CLASS 50.

*Files, carpenters' tools, hammers and tool steel.—*

- |                                   |                            |
|-----------------------------------|----------------------------|
| 1 pit saw, 6½ ft.                 | 1 one man crosscut, 3½ ft. |
| 1 crosscut saw, 4ft.              | 1 hand saw, 26 inch.       |
| 1 patent crosscut 4ft.            | 1 back saw, 12 inch.       |
| 1 circular saw, 18 inch diameter. |                            |

1. THOS. FIRTH & SONS, LTD., Norfolk Works, Sheffield.  
H. Watson Williams, Essex Street, Fremantle, Agent.

##### CLASS 52.

*Fire hose. Mining and general ironmongery.*

1. DAVID SYMON, LTD., Hay Street, Perth. W. Geo. Bradley, Agent.

*Sample screws, nails, spikes, bolts, &c.*

1. BENNIE, TEARE & CO., Woodward Street, Coolgardie.  
Ed. J. Bahen, Manager; H. L. Gill, Engineer.

*Patent horse collars, exhibited in York Court.*

1. W. HARDWICK, York, W.A.

##### CLASS 53.

*Galvanised wire netting.*

1. LYSAGHT WIRE NETTING COMPANY, Sydney, N.S.W.  
F. Thomas, Agent, 86 Pitt Street, Sydney.

Remember the MAISON DOREE, next Palace Hotel, is absolutely the best house in Kalgoorlie for Board and Residence. Meals, 1s. 6d.

TILLIE & HENDERSON'S WHITE SHIRTS give comfort and satisfaction to all. Ask your Storekeeper for them.

##### CLASS 55.

*A 6-inch armour piercing shot that has penetrated a 9-inch compound armour plate.*

*An 8-inch armour piercing shot for penetrating a 12-inch compound armour plate.*

1. THOS. FIRTH & SONS, LTD., Norfolk Works, Sheffield.  
H. Watson Williams, Essex Street, Fremantle, Agent.

### GROUP X.

#### MACHINERY, MACHINE TOOLS, &c.

##### CLASS 61.

*Drilling machines, hand or power.—Tangye's hydraulic bear punch-drills, emery wheels.*

1. BENNIE, TEARE & CO., Woodward Street, Coolgardie. Ed. J. Bahen, Manager. H. L. Gill, Engineer.

##### CLASS 62.

*Various anvils, bellows and forges.*

1. BENNIE, TEARE & CO., Woodward Street, Coolgardie.  
Ed. J. Bahen, Manager; H. L. Gill, Engineer.

##### CLASS 66.

*Smith Premier typewriters. National cash registers. Day time clock.*

1. DONALD MACKENZIE, Sylvester Street, Coolgardie.

DON'T FORGET.—Maison Doree, next Palace Hotel, Kalgoorlie. Superior to any house in town.—ROBERTSON & ZOWE, Proprietors. Meals, 1s. 6d.



**KANDY KOOLA TEA**—Is the Best Value, Superior Flavour, Strength and Quality.

CLASS 68.

*Various chain lifting blocks by Tangye's, Limited.*

*Tangye's hydraulic and screw lifting jacks.*

1. BENNIE, TEARE & CO., Woodward Street, Coolgardie.  
Edward J. Bahen, Manager. H. L. Gill, Engineer.

CLASS 68.

*A cast steel pile shoe.*

1. THOS. FIRTH & SONS, LTD., Norfolk Works, Sheffield.  
H. Watson Williams, Essex Street, Fremantle, Agent.

**GROUP XI.**

**PRIME MOVERS AND MEANS OF DISTRIBUTING THEIR POWER—RAILWAY PLANT.**

CLASS 75.

*Tangye's 8 N.H.P. "Colonial" type horizontal tubular boiler.*

*Tangye's 4 N.H.P. vertical boiler and various steam engines. (See Group I.)*

1. BENNIE, TEARE & CO., Woodward Street, Coolgardie.  
Edward J. Bahen, Manager. H. L. Gill, Engineer.

*Marshall's steam engines, portable type of latest pattern, 10 and 12 N.H.P.*

1. A. F. WILLIAMSON, 84 William Street, Perth.

**COSSON & MACKENZIE** keep the largest assortment of English Tweeds and Coatings on the Fields.

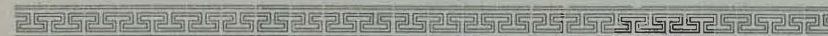
Contractor for the . . .  
**ELECTRIC LIGHTING and**  
**MOTIVE POWER for this**  
**EXHIBITION . . .**



**A. F. WILLIAMSON,**

**Electrical Engineer and Contractor.**

Large Stocks of Electrical Machinery and  
Material on hand for all classes of Town,  
House and Mine Lighting.  
Motor Fans for Ventilating.



The Exhibition Plant for Sale as a Whole or in Parts.

For all information enquire at  
the Engine Room, Exhibition  
Buildings, or at . . .



Head Office and Store:

**84 WILLIAM STREET, PERTH.**

**Dixson's No. 1 CIGARETTES ARE Absolutely Pure.**



# ROBERTSON & MOFFAT,

COMPLETE HOUSE FURNISHERS,

Murray Street, PERTH.

DINING, DRAWING AND BEDROOM SUITES.  
FRENCH AND ITALIAN BEDSTEADS.  
AXMINSTER, BRUSSELS, AND TAPESTRY CARPETS.  
LINOLEUMS AND FLOORCLOTHS.  
CUTLERY, CHINA, GLASSWARE AND  
HOUSEHOLD REQUISITES OF EVERY DESCRIPTION.

SOLE AGENTS FOR THE

Autotype Company's Pictures and Fine Art Reproductions.

SOLE AGENTS FOR

Frister & Rossman's Sewing Machines.

Hand Machine	...	...	...	£4 4 0
One Drawer Treadle Machine	...	...	...	5 15 0
Superior Treadle Machine	...	...	...	7 7 0

## All Goods

are purchased direct from the Manufacturers  
for Cash and

**Sold at Lowest Nett Prices**

**Wholesale and Retail.**

# F. E. SALTWELL,

Wine and Spirit Merchant.

*Agent for:*

J. & W. NICHOLSON & CO. LTD. LONDON GIN.

FINDLATER, MACKIE & CO. LTD. WHISKIES, &c.

GUSTAVE OUDART et FILS BRANDY.

HENRY THOMSON & CO.'S OLD IRISH.

BEST PILSENER LAGER, "STAG" BRAND.

ROYAL INSURANCE CO.

Australian Mutual Provident Chambers,

PERTH.

## VISITORS TO THE EXHIBITION

who wish to drink a perfectly

harmless and invigorating

stimulant should not

forget that

"Special"

is now generally

admitted to be the Purest

and Best Whisky in the World

SOLE AGENTS:

MILNE & CO.,

WILLIAM STREET, PERTH.

WHYTE & MACKAY



# DEVENISH'S

## *Ceylon Teas and Coffee.*

THE UPLANDS Brand CEYLON TEA.	Grown in the high lands of the Sweet Scented Island of Ceylon.	THE UPLANDS Brand CEYLON TEA.	After the Weary Toil of the Day,
THE UPLANDS Brand CEYLON TEA.	Rich, Luscious, and Fragrant.	THE UPLANDS Brand CEYLON TEA.	It Enlivens you to Run the Race of Life Afresh.
THE UPLANDS Brand CEYLON TEA.	Pleasant, Refreshing, Invigorating.	THE UPLANDS Brand CEYLON TEA.	A Cup of this High- class Tea.
THE UPLANDS Brand CEYLON TEA.	Not a Tasteless Decoction.	THE UPLANDS Brand CEYLON TEA.	It Renews the Spirits and Feeds the Brain.
THE UPLANDS Brand CEYLON TEA.	A Relishable De- light.	THE UPLANDS Brand CEYLON TEA.	Economical House- hold Requisite. Ask for it.
THE UPLANDS Brand CEYLON TEA.	Use Fresh Boiling Water, and Pour the Water off in Five or Seven Minutes.	THE UPLANDS Brand CEYLON TEA.	It has Stood the Test of Years,
THE UPLANDS Brand CEYLON TEA.	Amber in Colour, Fragrant as the Rose.	THE UPLANDS Brand CEYLON TEA.	And Stands Un- rivalled Still.
THE UPLANDS Brand CEYLON TEA.	A Refreshing and Stimulating Bev- erage.	THE UPLANDS Brand CEYLON TEA.	From the Spicy Island of Ceylon.

SOLD BY ALL GROCERS.

## H. A. DEVENISH

*Ceylon Tea and Coffee Merchant,*

HAY STREET, PERTH.

THE PURE JUICE OF THE GRAPE.  
THE  
ASK FOR

# Chateau Tanunda Brandy

UNSURPASSED FOR QUALITY.

KEPT BY ALL HOTELKEEPERS.

The Adelaide Wine Co., Limited,

"Chateau Tanunda,"

TANUNDA, SOUTH AUSTRALIA.

BLACKWOOD & BRYSON, LIMITED,  
GENERAL MERCHANTS.

THE GANDY BELT MANUFACTURING COMPANY, LIMITED,  
Patent "American" Cotton Belting,  
Standard "Dodge" Wood Split Pulleys.

SPRENGSTOFF WERKE Dr. R. NAHNSEN & CO. LTD., HAMBURG,  
"Phoenix" Brand Explosives.

JAS. EADIE & SONS, GLASGOW,

Wrought Iron Tubes for Gas, Water and Steam

HEAD OFFICE:  
12 Great Tower St.,  
London, E.C.

W.A. OFFICE:  
53 William Street,  
Perth.

WAREHOUSE:  
Cliff Street,  
Fremantle.

CALCUTTA:  
Blackwood, Blackwood & Co.  
12 Clive Street.

## DANIEL WHITE & COY. LIMITED.

The Premier Carriage Builders of Australasia.

Factories and

Show Rooms:

ST. KILDA ROAD,

MELBOURNE,

VICTORIA.

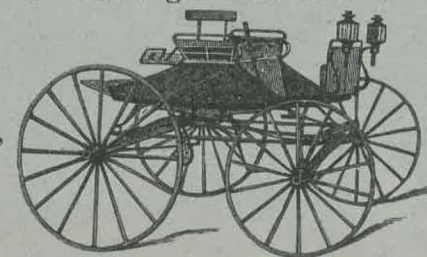
Factories and

Show Rooms:

HAY STREET,

PERTH,

W. AUSTRALIA.





# THE EQUITABLE LIFE ASSURANCE SOCIETY OF THE U.S.

Western Australian Branch:

WILLIAM STREET, PERTH.

Assurance in Force Exceeds - £204,150,000  
Assets Amount to - 53,125,000  
Surplus Exceeds - 11,450,000

LOCAL DIRECTORS (with power to issue policies and pay claims)--

ALEX. FORREST, Esq., M.L.A.,  
(Mayor of Perth)

Chairman.

EDWARD T. HOOLEY, Esq., M.L.A.

G. H. JOHNSTON, Local Manager.

General Manager for Australasia--

C. CARLISLE TAYLOR.

## McLEAN BROS. & RIGG LIMITED.

WHOLESALE IRONMONGERS and

Importers of Mining, Building, and Contractors' Material.

PERTH,

Full Stocks of Bar Iron and Steel, Iron and Steel Plates, Flexible Wire and Manila Ropes, Proof Chain, Differential Blocks, Bar, Sheet, and Tube Copper, Milner's Fire-Proof Doors and Safes, Harland's Varnish, Oils and Colors, Watt's Fire Bricks, Fire Clay, Castor Oil, Cotton Waste, Bolts and Bolt Ends, Spikes, Tram Rails, Tools, Vauxhall Steam Pumps, &c., &c.

MELBOURNE, SYDNEY, ADELAIDE, LONDON, NEW YORK.

THE ONE

Complete  
Writing  
Machine



IS THE

### REMINGTON STANDARD TYPEWRITER.

Send for information about  
the 1899 Models.

It does not rely on one or two special features good enough to talk about, but upon all round EXCELLENCE and DURABILITY, which produce the BEST WORK all the time, and lots of it.

Sole Importers: STOTT & HOARE, 120 Barrack Street, Perth.  
And at Adelaide, Melbourne, Sydney and Brisbane.

# New Zealand Insurance Company.



## FIRE AND MARINE.

ESTABLISHED 1859.

CAPITAL - £1,000,000.  
RESERVES - £400,000.

Unlimited Liability of a large and influential body of Shareholders.

Dwellings, Furniture and Personal Property of every description, Stores and Shops, Stocks-in-Trade, Merchandise, Hotels and their contents, Insured at the Very Lowest Rates.

### Mining Plants & Machinery a Speciality.

All Bona Fide Claims Settled with Liberality and Despatch.

BRANCHES AND AGENCIES THROUGHOUT THE WORLD.

THE WEALTHIEST COLONIAL FIRE AND MARINE INSURANCE COMPANY south of the Line. Its Perth Premises in St. George's Terrace (between A.M.P. Society and Western Australian Bank) are its own Freehold Property, and form a very valuable and additional Asset to its Policy Holders in W.A.

## New Zealand ACCIDENT Insurance Co., INSURES AGAINST ACCIDENTS OF EVERY DESCRIPTION.

PLATE GLASS INSURED AGAINST ACCIDENTAL BREAKAGE.

EMPLOYERS AND MINE OWNERS LIABILITY COVERED AT SPECIALLY LOW RATES.

THE OLDEST, LARGEST AND STRONGEST COLONIAL ACCIDENT INSURANCE COMPANY.

Support your own Colonial Institutions, who Invest and keep their money in the Colonies.

EDWARD PRETTY, Manager.

St. George's Terrace, Perth.



# THE COMMERCIAL BANK OF AUSTRALIA LIMITED.

Registered Capital, £4,800,000; Paid-up, £3,082,511.

## Directors.

Hon. JAMES SERVICE, M.L.C., CHAIRMAN.

A. CURRIE, Esq., J.P.

R. HARPER, Esq., J.P.

Hon. W. H. EMBLING, M.L.C.

Hon. N. THORNLEY, M.L.C.

General Manager—HENRY GYLES TURNER, Esq.

**Head Office: COLLINS ST., MELBOURNE.**

## Managers:

EDWARD SMITH, J.P., and JOHN BARTHOLOMEW, J.P.

## Accountant:

E. C. O. HOWARD.

**LONDON OFFICE: 1 BISHOPSGATE ST. WITHIN, corner LEADENHALL ST.**

Directors—JOHN CONNELL, Esq. and A. J. MALCOLM, Esq.

Manager—GEO. NIVEN. Accountant—G. W. WALLACE.

Branches and Agencies in Victoria, New South Wales, Queensland, South Australia,

## WESTERN AUSTRALIA.

**PERTH BRANCH: 293 ST. GEORGE'S TERRACE.**

Local Director—The Hon. Sir JAS. GEORGE LEE-STEERE, Speaker of the Legislative Assembly.  
Manager—W. H. J. THOMAS. Accountant—F. MARRIE.

Branches at Fremantle, Southern Cross, Coolgardie, Kalgoorlie, Esperance.

Intercolonial Agents, European and Foreign Agents.

## INTERNATIONAL PATENTS OFFICE.

**PATENTS OBTAINED and TRADE MARKS REGISTERED**

all over the WORLD.

**GOLD RECOVERY** Inventions a Specialty.

**RICHARD SPARROW,**

PERTH,

Licensed Patents Agent, also by Special Appointment to the

Exhibition Commissioners.

# THE WESTERN AUSTRALIAN BANK.

ESTABLISHED 1841.

Authorised Capital (25,000 Shares of £10 each) - - £250,000.

Paid-Up Capital (10,000 Shares of £10 each) - - £100,000.

Reserve Fund - £175,000. Reserved Profits, £17,653 15s. 9d.

**HEAD OFFICE \* \* \* PERTH, W.A.**

## DIRECTORS

Hon. Sir George Shenton, Knt., Chairman. Hon. W. T. Loton, M.L.C. Hon. Geo.

Randell, M.L.C. J. B. Roe, Esq., J.P. J. F. Stone, Esq., J.P.

H. D. Holmes, General Manager. H. W. Bevilacqua, Accountant.

Messrs. Stone & Burt, Solicitors.

## BRANCHES.

ALBANY—A. H. RICHARDSON, Manager.	KALGOORLIE—T. HARKNESS, Manager.
BLACK FLAG—A. H. PRICE, Manager.	(HANNAN'S)
BROAD ARROW—G. F. CLARKE, Manager.	KANOWNA—E. M. AUSTIN, Manager.
(KURAWA)	(WHITE FEATHER)
BULONG—E. E. SCHROEDER, Manager.	LEONORA—D. L. McLEOD, Acting Manager.
BUNBURY—F. E. STAFFORD, Manager.	MENZIES—C. T. DURBRIDGE, Manager.
Agy. at Busselton	MT. MAGNET—J. CLEAVE, Jun., Mgr. pro tem.
COOLGARDIE—G. A. STRANG, Manager.	MT. MALCOLM—A. G. KIPLING, Acting Manager.
CUE—A. S. McD. GUNNING, Manager.	NANNINE—J. W. MANSOM, Acting Manager.
DONGARA—W. B. MITCHELL, Jun., Manager.	NEWCASTLE—A. C. FRANKLYN, Manager.
ESPERANCE—C. McMICHAEL, Manager.	NORSEMAN—W. W. S. PRICE, Manager pro tem.
FREMANTLE—C. LEONARD CLIFTON, Manager.	NORTHAM—JAS. MITCHELL, Manager.
GERALDTON—R. W. LOWE, Manager.	SOUTHERN CROSS—W. J. HUMPHRIES, Manager.
	YORK (Agency at Beverley)—J. F. LAW, Manager.

## AGENTS.

**LONDON.**—The Bank of Adelaide, 11 Leadenhall Street, E.C.

**SOUTH AUSTRALIA.**—The Bank of Adelaide.

**VICTORIA.**—Bank of New South Wales; Bank of Victoria Limited; Royal Bank of Australia Limited; The Colonial Bank of Australasia Limited.

**NEW SOUTH WALES.**—The Bank of New South Wales.

**QUEENSLAND.**—The Bank of New South Wales; The Bank of North Queensland Limited.

**NEW ZEALAND.**—The Bank of New South Wales.

**TASMANIA.**—The Commercial Bank of Tasmania Limited.

**INDIA, SINGAPORE AND CHINA.**—Hong Kong and Shanghai Banking Corporation

**ENGLAND.**—The Manchester and Liverpool District Banking Company Limited.

The Birmingham District and Counties Banking Company Ltd.

**SCOTLAND.**—The British Linen Company Bank.

**IRELAND.**—The Bank of Ireland.

**AUSTRIA.**—Banque Imperiale Royale, privilégiée des pays Autrichiens.

**FRANCE.**—The Credit Lyonnais.

**GERMANY.**—The Deutsche Bank; The Dresdner Bank.

**MAURITIUS.**—The Bank of Mauritius Limited.

The Bank purchases Bills on England and other countries, issues Drafts on its several Agents, and transacts every description of Banking business.



**THE**  
**NATIONAL**  
**MUTUAL**  
 LIFE . . . . .  
 ASSOCIATION OF . .  
 AUSTRALASIA  
 LIMITED. . . . .  
 ESTABLISHED 1869.

ALL KINDS OF ASSURANCES AND ENDOWMENTS  
 EFFECTED.

Funds in hand - - - £2,775,000.  
 Annual Income exceeds - - - £480,000.

FIRST OFFICE IN THE WORLD to apply the Surrender Value of  
 Policies to pay Premiums overdue, thereby preventing lapsing of  
 Policies until the Surrender Value is exhausted.

MODERATE RATES. LIBERAL CONDITIONS.  
 LARGE BONUSES.

WESTERN AUSTRAL A BRANCH OFFICE:

**ST. GEORGE'S TERRACE, PERTH.**

Local Directors:

GEORGE LEAKE, Esq., Q.C., M.L.A. | HON. SEPTIMUS BURT, Q.C., M.L.A.

THE RIGHT HON. SIR JOHN FORREST, P.C., K.C.M.G., M.L.A.

HY. WRIGHT, Resident Secretary.

All information supplied on application to Resident Secretary or Local Agents.

**HENRY J. SAUNDERS & Co.,**

*St. George's Terrace, Perth, W.A.,*

STOCK AND SHARE BROKERS,

MINING, LAND, &

FINANCIAL AGENTS

Attorneys & Agents in Western Australia for the following Companies:

THE TOWN PROPERTIES OF W.A., LIMITED  
 CALLION, LIMITED

GOLD LANDS CORPORATION, LIMITED

HANNAN'S KALGOORLIE PROPRIETARY, LIMITED

MOUNT JACKSON GOLD MINES, LIMITED

FLORENCE GOLD MINE, LIMITED

MONA GOLD MINE, LIMITED

PRINCESS ALIX GOLD MINES, LIMITED

MOUNT MARGARET REWARD CLAIM, LIMITED

QUARTZ HILL REWARD CLAIM, LIMITED

YERILLA CLAIMS, LIMITED

NORTH WHITE FEATHER CONSOLIDATED GOLD MINES,  
 LIMITED

WEST AUSTRALIAN TRUST, LIMITED

DAMPIER SYNDICATE, LIMITED

AURORA GOLD PROSPECTING SYNDICATE.

HEAD OFFICE OF

THE LADY SHENTON GOLD MINE, LIMITED.

(J. H. SEDERGREEN, Secretary.)

REPRESENTATIVES IN W.A. FOR

MESSRS. FRASER & CHALMERS, LIMITED (London and Chicago),

Manufacturers of Mining Machinery of all kinds.

Cable Address: KANGAROO, Perth.

Telephone No. 59.

Codes Used: BEDFORD MACNEILL and MOREING & NEAL.

LONDON AGENTS: Messrs. John Girdwood & Co. Limited,

18 St. Swithin's Lane, E.C.

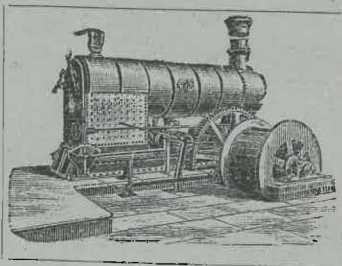


# William Sandover & Co.,

PERTH, FREMANTLE, & LONDON

(Local Representative—H. FULTON, Hannan St., Kalgoorlie.)

Every Description of Mining Machinery  
in Stock.



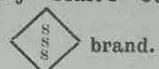
Marshall, Sons & Co.'s Portable, Semi-Portable, Vertical, Horizontal, and Winding Engines.

Hornsby's Akroyd Oil Engines, from 1½ to 40 B.H.P.

Howard's Mining Trucks, end and side tip.

T. & W. Smith's Special Flexible Mining Ropes.

Sydney Searl's Octagon Cast Steel

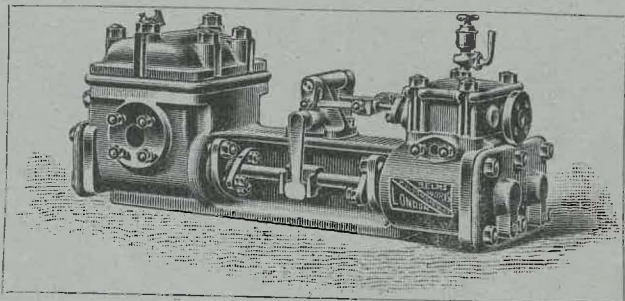


brand.

Andrews' Toledo Drill Steel, M M quality.

Bickford's Double Tape Fuse.

Wm. Bennett & Sons' Patent White Countered Gutta Percha Safety Fuse.



SOLE AGENTS FOR—

The Pulsometer Engineering Co.

Pulsometer Steam Pumps.

Steam Donkey Pumps.

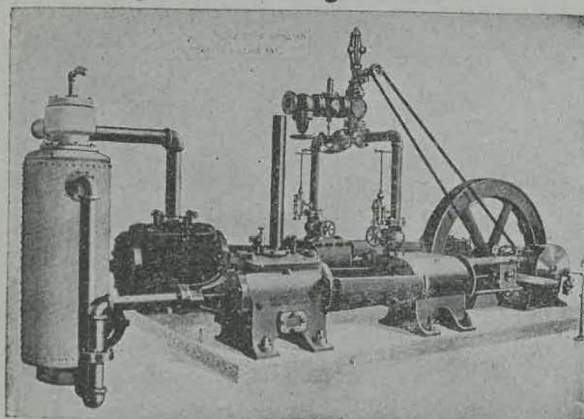
Direct-Acting Steam Pumping Machinery.

The Deane Duplex Steam Pump.

Centrifugal Pumping Machinery.

CATALOGUES POST FREE ON APPLICATION.

## The Ingersoll-Sergeant Drill Co.



CLASS "Q."

With Duplex Air Cylinders, or Compound Air Cylinders with Intercooler.

AIR COMPRESSORS

STRAIGHT LINE

OR

DUPLEX TYPE,

Furnished with our well-known

PISTON INLET VALVE,

Giving the highest efficiency obtainable.

## ROCK DRILLS.

INGERSOLL-SERGEANT AND "IMPROVED INGERSOLL" DRILLS,

WITH

Single and Double Screw Columns, Tripods, Air Hose, and Complete Line of Duplicate Parts on hand.

## Fraser & Chalmers Limited.

STAMP BATTERIES

BALL MILLS

HUNTINGTON MILLS

HOISTING ENGINES

STEAM PUMPS

ORE FEEDERS

ROCK CRUSHERS

FRUE VANNERS

BOILERS

ENGINES

AND

GENERAL MINING MACHINERY.

For Catalogues, Prices and further particulars, Address—

THE INGERSOLL-SERGEANT DRILL CO.,  
**FRASER & CHALMERS Ltd.,**

P.O. Box 152, KALGOORLIE, W.A.



**For Fit, Value and Style,**

EVERY SHIRT STAMPED  
WITH  
REGISTERED TRADE MARK.



LEADS  
THE WAY.

**SONTAG & TAVERNAY,**

French Kid Gloves ARE THE BEST  
FOR FIT AND WEAR.

Telephone No. 36.

**THE TRANSPORT TRADING & AGENCY CO.**  
**OF W.A. Limited.**

**(Late TOBIAS BROTHERS.)**

**COOLGARDIE, W.A.**

**IRON AND GENERAL MINING HARDWARE  
MERCHANTS.**

***Wines, Spirits, Forage and Provisions***

**(Wholesale and Retail.)**

BRANCHES AT

**Fremantle, Coolgardie, Mt. Malcolm, Diorite King, Etc.**

**London Office: Worcester House, Walbrook, E.C.**

**THE  
DEPARTMENT OF AGRICULTURE  
OF WESTERN AUSTRALIA.**

**PERSONS** who contemplate settling upon the Lands of Western Australia should communicate with the DEPARTMENT OF AGRICULTURE for particulars as to locality and suitability of land to the growth of various crops.

The Department issues the PRODUCER'S GUIDE AND SETTLER'S RECORD, a journal on Agronomic subjects, and has now in course of preparation a Revised and Enlarged Edition of the HANDBOOK OF HORTICULTURE AND VITICULTURE, to be published at an early date. A SETTLER'S GUIDE AND FARMER'S HANDBOOK is being issued in parts. Parts I, II, III, IV, V, and VI, are now ready, and may be had on application to the Department, or Messrs. E. S. Wigg & Son, Booksellers and Stationers, Hay Street, Perth.

THE WEST AUSTRALIAN

**SETTLER'S GUIDE & FARMER'S HANDBOOK.**

- PART I.**—Descriptive Notes on the Agricultural Areas and Crown Lands open for Selection, and an enumeration of the productive possibilities of the Golden West, with twelve full page photo-zinc engravings and six maps.
- PART II.**—The settler's outfit, clearing, ring-barking, cultivating, harvesting, gardening, farm book-keeping, recipes and medical hints, with numerous woodcuts.
- PART III.**—Fodder and forage plants (native and introduced), grasses and salt bushes, noxious weeds and poison plants, profusely illustrated with specially drawn woodcuts.
- PART IV.**—Sheep husbandry. Specially written for the SETTLER'S GUIDE by Mr. George Brown ("Bruni") of the Australasian. Illustrated with process engraving and woodcuts.
- PART V.**—Soils and manures. By S. S. Dougall, F.I.C., agricultural chemist to the Department of Agriculture.
- PART VI.**—Dairying—Butter and cheese making. By Alexander Crawford, dairy expert to the Department of Agriculture.

**Price - ONE SHILLING per Part.**

**PEACOCK & COMPANY, Ltd.,**

**LEATHER AND GRINDERY** Weld Chambers, St. George's Terrace,  
**MERCHANTS,** **PERTH.**

Direct Wholesale Importers from London and Continental Markets of **BOOT UPPERS, FANCY LEATHERS,** and all **GRINDERY REQUISITES** for the Trade.

**J. T. ALTHORP - - MANAGER.**

Bespoke Orders and Telegrams have prompt attention.

**TANNERY: SOUTH AUSTRALIA.**

**The Goldfields Cycle Co., Ltd.**

**R. T. HORE, Manager.**



**CYCLE  
IMPORTERS**

Sole Agents for **TRIUMPHS**. Agents for **SWIFTS, RALEIGHS, SINGERS** and **JAMES.**

**THE** largest and best assortment of Bicycles on the Goldfields. Prices below those ruling in Melbourne. Ladies' and Gents' Bicycles specially built for the Fields, combining lightness and strength. Remember, we stock only the best, and guarantee every Machine we sell. Study your pocket, and give us a call before purchasing elsewhere.

Tyres of all makers—Dunlop's a speciality—and a Complete Stock of Accessories always on hand. Repairs of all descriptions promptly attended to. Bicycles can be purchased on Time Payment.

Note the Address—

**THE GOLDFIELDS CYCLE COMPANY, Ltd.,**

Hunt St. (near Sylvester Street), **COOLGARDIE.**

Telephone No. 44.



# BUNSELL & CO.,

## BOOT and SHOE

Manufacturers and Importers.

LARGE AND VARIED  
ASSORTMENT  
LADIES' & GENTS'  
BOOTS & SHOES.



SHOEMAKERS'  
CUTLERY  
AND  
GRINDERY  
ON SALE.

ENGLISH AND COLONIAL MANUFACTURE.

HAND-SEWN WORK A SPECIALTY.

WORKMANSHIP SECOND TO NONE  
IN AUSTRALIA.

## DANBY, BUTLER & CO.,

(Resident Partner: W. E. BAGNALL),

**Accountants, Auditors, Insurance Brokers, &c.,**

Agents and Attorneys for Absentees and Companies,

**Princes Buildings,**

**345 St. George's Terrace, PERTH.**



# THE AUSTRALIAN Gold Recovery Company, Ltd.

OWNERS OF

## THE M'ARTHUR-FORREST PATENTS (CYANIDE PROCESS.)

The Rates of Royalty charged for the use of the Process are:

5 per cent. on the value of Bullion recovered from Tailings.  
 2½ " " " " " " Ore Treated Direct.

FULL TESTS MADE ON ORE AND TAILINGS.

Contractors for the Supply and Erection of Complete Cyanide Plants.

Sole Agents for the Cassel Company's Brand of  
PURE CYANIDE.

All Communications to be Addressed to—

P.O. Box 92, KALGOORLIE.

OFFICE AND LABORATORY: PICCADILLY STREET.

VINCENT F. SHALLCROSS, Business Manager.



# Mutual Life

## Association

## of Australasia.

Established 1869, and Incorporated by Act of Parliament.

CONDUCTED ON PURELY MUTUAL PRINCIPLES.

### ACCUMULATED FUNDS - - £1,250,000.

All Forms of Assurances granted, including

### "FAMILY TRUST" POLICIES

Guaranteeing 5% INTEREST on the Sum Assured to WIDOW  
or other LEGATEE.

DIRECTORS.

HON. H. B. LEFROY, M.L.A., Minister for Mines. H. T. KELSALL, Esq., M.D., Lond.

Head Office for W.A.:

EDWD. W. MANBY,

STOCK EXCHANGE BUILDINGS, PERTH.

Secretary.

## H. STANWIX,

Consulting Engineer to the  
W.A. International Mining  
and Industrial Exhibition.

### Contracts to supply

Designs, Plants and Erection of same for

Winding, Compressed Air, Pumps,  
 Steam, Air or Electrically Driven  
 Elevating, Crushing and Gold,  
 Saving.

Repairs of all descriptions.

Iron and Gunmetal Castings.

Boiler and Engine Work.

Large Stock of Tubes, Pipes, Pulleys  
 Plummer Blocks and Shafting  
 always available.

Hunt Street, Coolgardie.

Telephone No. 15.

## Silverthorne & Adair,

### MACHINERY MERCHANTS, &c.

FOUNDRY &amp; YARDS,

### RENOU STREET, COOLGARDIE.

### MACHINERY BOUGHT & SOLD.

Large quantity of all descriptions of Mining Machinery on hand, including  
 Stationary Engines, Portable Engines, Oil Engines, Boilers,  
 Batteries, Winding Plants, Air Compressors, Stone-  
 breakers, Berdan Pans, etc.

### ♦ MACHINERY REPAIRED. ♦

Ore crushed for the Public at the Ore Reduction Works at Cheapest Rates.

 **OPPOSITE EXHIBITION.**



# THE TIVOLI RESTAURANT

(Late Cafe de Paris),  
CENTRE OF BAYLEY STREET.

**Manager - - - Mr. GEO. SEYLER**

(Late of Paris and London).

Meals from 2s. Board from 35s. per week. Board and Lodging from 45s. per week.  
Special Terms for a period.

## THE ONLY COSMOPOLITAN RESTAURANT IN W.A.

French, German, Italian and American Cooking. Every European Language spoken

**The Most Recherche Dinners** Equal in style to anything to be had in the  
Capitals of the other Colonies, at short notice

SELECT SUPPERS TILL MIDNIGHT.

## THE ONLY PUBLIC GARDEN IN COOLGARDIE.

Accommodation for any number of Guests at any time.

The Most Central Position, and within a stone's throw of the Exhibition Buildings.

**Look out for and Remember the "TIVOLI."**

**STRUCK IT RICH!**



BOARD and  
RESIDENCE  
25s. Per Week.

WHY!! at the

**MELBOURNE CAFE,**

WHERE YOU WILL FIND A

SPACIOUS AND WELL VENTILATED DININGROOM,

AND YOU CAN DEPEND . . . . . At Breakfast, Dinner, or Tea, served promptly,  
UPON GETTING AN . . . . . with every civility, and undoubted cleanliness.

WE ONLY ASK ONE VISIT, . . . . .  
YOU ARE SURE TO COME AGAIN . . . . .  
AND WILL ALSO BRING YOUR FRIENDS



ALL MEALS - 1s. Each.  
GOOD BEDS - 1s. and .  
1s. 6d. per Night  
22 TICKETS FOR £1. . . .

Paste the Address in your hat—

**Melbourne Cafe.**

BAILEY STREET EAST,  
COOLGARDIE (close to Exhibition).

TOMMY BRITTON, Proprietor.

# T. STODART & CO., *Auctioneers, Land, Mining & General Commission Agents.*

COOLGARDIE & KALGOORLIE.

AGENTS FOR ABSENTEES.

## AGENCIES—

A. U. S. N. CO. LTD., Coolgardie and Kalgoorlie  
W.A. BUILDERS' LIME & STONE CO. LTD.,  
Coolgardie and Kalgoorlie  
NEW ZEALAND INSURANCE CO., Coolgardie  
District  
P. & O. S. N. CO., Coolgardie.  
NOBEL'S EXPLOSIVES' CO. LTD., GLASGOW,  
Kalgoorlie District

## Goldfields Representatives of—

J. BARRE-JOHNSON & CO., of Fremantle,  
London, Glasgow, and Sydney,

IMPORTERS OF

PIPES & FITTINGS, MACHINERY, BLAKE  
PUMPS, MINING REQUISITES, BUILDERS  
MATERIAL, &c.

## AGENCIES UNDERTAKEN.

# THE ENGLISH AND AMERICAN CYCLE AGENCY,

(OPPOSITE TOBIAS BROS.)

Sole Agents in W.A. for the celebrated "Amazon" Bicycles, fitted with Westwood, Steel, or Wool Rims, and Dunlop Tyres. Also "Triumph," "Wearwell," "Herald," and "Rothwell" Bicycles in stock.

BICYCLES BUILT TO ORDER FROM ANY PARTS AND DESIGN TO SUIT CUSTOMERS.

MACHINES FROM £17 10s.—CASH OR TERMS.

Bicycle and other Repairs a Speciality.

All Accessories at Lowest Rates.

A Large Assortment of Ladies' and Gents' Bicycles on Hire.

H. MURRAY, Proprietor.

**ROBINSON & LUCE,**

Corner of . . .

**PLUMBERS,**

FORD & SYLVESTER STREETS, COOLGARDIE.

SPECIALISTS AT MINING WORK.

**JOHN ALVES,**  
GENERAL CARRIER,  
Sylvester Street, Coolgardie

(ABOVE SILVERTHORNE'S SAW MILLS).

Contractor for Mining Machinery to be removed to any part of the  
Fields. Removing Houses a Speciality.



# ALLEN, STANLEY & CO.,

Assayers and Metallurgists,

19 BEACONSFIELD CHAMBERS,

COOLGARDIE.

Box 250.

## Acme Cycle Depot, Hunt Street, COOLGARDIE.

Sole Agent for the ACME & MONOPOLE CYCLES, fitted with Westwood Steel Rims and Dunlop Tyres. These Machines carry a guarantee for 12 months.  
MY SPECIAL LINE is BUILDING CYCLES TO ORDER. REPAIRS A SPECIALITY

D. LORIMER, Proprietor.

### NOTICE TO MINE OWNERS AND OTHERS.

For the Cheapest and Best Condenser and Tank Work, visit

## GEORGE J. KINGSBURY,

Sylvester St., Coolgardie, and Maritana St., Kalgoorlie.

ESTIMATES AND PLANS—GRATIS

## BROWN & WILLIAMS,

Signwriters and Decorators,

Appointed Sole Contractors to the Exhibition Commission

Address—EXHIBITION BUILDINGS  
and SYLVESTER STREET,

COOLGARDIE.

## Coolgardie Hardware Coy.,

WHOLESALE AND RETAIL IRONMONGERS  
AND IRON MERCHANTS

The firm devote their whole attention to the Hardware Trade in all its Branches.  
Importers of American and Continental Hardware, Coal, Coke, Lime, Cement, Galvanized Roofing and Bar Iron, Water Tubes and Fittings, Explosives and all Mining requisites.

Branch:

THE KALGOORLIE HARDWARE COY.,  
Hannan Street, Kalgoorlie.

STORES SUPPLIED AT WHOLESALE RATES.  
AGENCIES UNDERTAKEN.

## A. & J. KYLE, Undertakers, Builders' Contractors, and Timber Merchants . . .

CASSIDY STREET, KALGOORLIE.

Funerals conducted in first-class style.

Every requisite kept in stock.

Agents for WILSON, GRAY & CO., Monumental Masons.

TELEPHONE No. 23.

## West Australian Wines.

Warranted Pure and Sound, and Free from all Chemicals or added Spirit.  
Will keep Sound and Health-giving for any time and in any Climate.

## C. KELSO,

Champion Wine Maker of W.A.,  
NORTHAM.

Prices from 6s. per Gallon upwards.

## Standard Steam Saw Mills,

NORTHAM.

JOHN SERMON, PROPRIETOR,

Begs to announce that he has in Stock a LARGE and VARIED Quantity of well seasoned York Gum and TIMBER for Wheelwrighting and Coachbuilding purposes.

Naves, Spokes and Felloes a Specialty.

ORDERS PROMPTLY ATTENDED TO.

LIBERAL DISCOUNT FOR CASH.

"For the Cause that needs Assistance."

PERTH CHARITY FETE AND

GIFTS DISTRIBUTION.

1/- Tickets may be obtained from Gouly & Son, Catalogue Stall.



# PECTOR & DUCOUT J<sup>NE</sup> Paris.

*Saint Julien.*

LEON GIBUS, Representative, 541 Hay Street, Perth.

*Nectar de Bony.*

IMPORTERS & INDENTORS,

Best Champagnes, Brandies, French Clarets, Quinine Wines and Liqueurs,  
Sardines, Preserved Meats, Vegetables, French Delicacies, Perfumes, &c.

SEE OUR DISPLAY AT THE EXHIBITION.

## SADLEIR & CO.,

DALGETY STREET,  
FREMANTLE.

Customs and Forwarding Agents,

9 PERTH CHAMBERS,  
HAY STREET,  
PERTH.

SPECIALLY APPOINTED : **BAGGAGE AGENTS** FOR ALL MAIL AND INTERCOLONIAL STEAMERS.

Luggage Collected from any Address & Placed on Board Out-going Steamers. Goods and Parcels Delivered to any Address in the World.

Goldfields Agents—WESTON & RIDDLE. Melbourne Agents—F. TATE & CO., LTD., and MAYNE, NICKLESS & CO.  
London " H. JOHNSON & SONS. Adelaide " H. GRAVES & CO., and COCKING & CO.  
Bremen " A. HARTEODT.  
Sydney Agents—SUTTON & CO.

AGENTS FOR THE

Mannheim Marine Insurance Company.

**L. L. Herring,**

CUSTOMS,

FORWARDING AND

**Baggage Agent.**

Luggage Delivered, Despatched or Stored. Goods Cleared ex Ship or from Bond.

Representative meets all Boats on Arrival.

BAGGAGE AGENT FOR THOS. COOK & SON.

Dock Buildings, opposite Railway Station, **FREMANTLE.**

Agent for—  
SANDERS & COY., Sydney.  
THOS. BRYCE & COY., Brisbane.  
F. P. HEWLETT, Melbourne.

TELEPHONE 803.

# RUSSELL, DENNY & Co. LTD.

Perth and Fremantle,

Managing Directors:

A. J. RUSSELL  
J. L. DENNY, C.E.,  
M.I.M.E.  
W. M. RUSSELL.



**Merchants, Importers of  
Mining Requisites .  
Engineers . . . .  
General Agents . .**



Sole Agents in W.A. for:

Dick's Celebrated Balata Belting

Extensively used by the leading  
Mining Companies in South  
Africa, Australia and New Zealand.



Union Tube Company, Ltd.,

ON ADMIRALTY, WAR OFFICE, INDIAN OFFICE,  
AND BOARD OF TRADE LISTS.

Manufacturers of Iron & Steel  
Tubes  
Black and Galvanised Wrought  
Iron Gas and Water Pipes  
Steam Pipes, Boiler Tubes, &c.



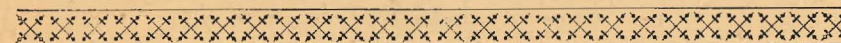
Allan, Whyte & Co.,

Flexible Steel Wire Ropes for  
Mining,  
Aerial Tramways, &c.

## IMPORTERS OF

Bar Iron, Iron and Steel Plates, Mining Steel of all descriptions, Andrew's, "SSS," Firth's, &c., Flexible Steel Wire Ropes, Tram Rails and Fittings, Flanged Truck Wheels, Mining Trucks, Scotch Firebricks and Fireclay, Foundry Coke, Pig Iron and Hematite Cement, Quicksilver, Galvanised Iron, Oils and Greases, Lubricators, Steam Fittings, Asbestos Goods and Packings, Tullis' English Oak Tan and Orange Tan Leather Belting, &c., &c.

Indents Executed for all kinds of Mining Machinery, Pumping Plants, &c.



HEAD OFFICE: St George's Terrace, Perth.

STORES: High Street, Fremantle.

CABLE ADDRESS:

"Atobes," Perth.

TELEPHONE Nos.:

1022, Perth; 652, Fremantle.



# The West Australian.

PUBLISHED EVERY MORNING.

*The Leading Paper of the Colony.*

*Guaranteed much the*

**Largest Circulation**

*of any DAILY in WESTERN AUSTRALIA.*

*Subscription in Advance £1 6s. per Annum.*

POSTAGE OUTSIDE THE COLONY EXTRA.

# The Western Mail.

West Australia's Illustrated Weekly.

**Published .**  
**Specially .**  
**for . . . .**  
**Country . .**  
**and . . .**  
**Abroad . .**

News of the Week, etc., full information Mining, Agricultural, Sporting, etc.

The Farm, Ladies Page, latest English, Foreign and Inter-colonial Telegrams, and Stories and Humour.

Four Pages of Illustrations each Week.

Greater Circulation than any other Weekly Paper in the Colony.

BEST WEEKLY ADVERTISING MEDIUM.

Subscription 22/6 in Advance Per Annum.

# E. S. Wigg & Son,

Hay Street,

Perth.

PRINTERS . . . . .
MANUFACTURING and . . . . .
COMMERCIAL STATIONERS . . . . .
BOOKBINDERS . . . . .
BOOKSELLERS . . . . .
NEWS AGENTS . . . . .
FANCY GOODS DEALERS and . . . . .
ARTISTS' COLORMEN . . . . .

**PRINTING**—We have the Newest Types, best Machinery, and the most competent workmen in the Colony. Our prices are low, and we shall be pleased to quote for Printing of every description.

**ACCOUNT BOOKS** made to order, any ruling, paper and binding. We guarantee all work to be the very first quality, and finished in the best style.

**COMMERCIAL STATIONERY**—We have the largest and most complete stock in W.A., and can supply all first-class goods at the very lowest price.

**NEW BOOKS** in all departments of Literature arrive by Mail Steamers, and we are always adding to our stock of Standard Works.

**MAGAZINES**—All the best Periodicals are on sale, and we make a point of getting the current dates as early as possible. List on application.

**FANCY LEATHER GOODS**—A beautiful selection of the latest Purses, Pocket Books, Letter Cases, Card Cases, Cigar and Cigarette Cases, Travelling and Tourists' Cases, Blotters, Writing Desks, Photo. Albums, Dressing Cases, etc., etc.

**ARTISTS' COLORS**—Artists can always obtain necessary requisites for painting in Oil and Water Colors. All WINSOR & NEWTON's goods kept in stock.

**E. S. WIGG & SON,**

*Printers, Stationers and Booksellers,*

HAY STREET, PERTH.



**A. W. DOBBIE & CO.,**  
**MANUFACTURERS & IMPORTERS,**  
**307 & 459 Hay Street, PERTH.**

BRASS FOUNDERS . .

BRASS FINISHERS . .

ENGINEERS . . . .

MACHINISTS . . . .

ELECTRO PLATERS .

Water Meters all sizes in Stock

Sole Agents for

The Wonderful WERTHEIM

Sewing Machines.

NEUMEYER PIANOS . . .

WILCOX &amp; WHITE ORGANS

STIRLING BICYCLES . . .

Send for Illustrated Catalogue.

**A. W. DOBBIE & CO.**

OFFICE and FACTORY:  
307 Hay Street East.SHOW ROOM:  
459 Hay Street, PERTH.

Agents in  
 SYDNEY, MELBOURNE,  
 BRISBANE, ADELAIDE,  
 EUROPE, AMERICA,  
 BOMBAY, BENGAL,  
 MADRAS, SOUTH AFRICA.

Advance



Australia.

Agents in  
 COLOMBO, HONOLULU,  
 BURMAH, SINGAPORE,  
 CHINA, BATAVIA,  
 MANILA, JAPAN,  
 FIJI.

**TAYLOR BROS.**

CAPITAL PUNISHMENT.

THE

**PREMIER WHITE ANT EXECUTIONER.**

REMEMBER!

That the cost of applying this certain Specific to the lower timbers of your building in course of erection would only amount to a very small percentage on the total value of the property thus protected, immunity being thereby secured against inroad of this destructive pest, which is sometimes in the long run as bad as a fire; therefore, if you insure against fire, why not guard against White Ant, practically by paying only one premium.

Manufacturers of the Federal Refrigerating Compound and White Ant Exterminator, The Patent Anti-Fouling Cobra-Resisting Anti-Corrosive and Wood Preservative, and Damp Proof Paints. For Wood or Iron Ships, Piles, Wharves and Bridges.

AS SUPPLIED TO H.M. GOVERNMENT OF W.A.

**TAYLOR BROS., Highgate Hill, Perth.**

Agents—J. & W. BATEMAN, Fremantle; Messrs. SANDOVER & CO., Perth & Fremantle;  
 D. SYMON & CO.

GOULY & SON, Sole Agents for Coolgardie, and all other places than Perth and Fremantle.

**Sands & McDougall**

LIMITED.



**PRINTERS**

**BOOK BINDERS**

WHOLESALE &amp; RETAIL

**STATIONERS**



**448 HAY STREET, PERTH,**

**And at Melbourne & London.**



**RUSSELL, DENNY & CO., LTD.,**  
**MERCHANTS,**  
**Importers of Mining Requisites,**  
**ENGINEERS, GENERAL AGENTS.**

Store and Office—

**HIGH STREET, FREMANTLE.**

**ORENSTEIN & KOPPEL, LTD.,**  
 Manufacturers of **BERLIN.**  
 Every Description of Railway Plant, Rolling Stock & Locomotives.

REPRESENTATIVES FOR W.A.:

**STRELITZ BROS.,** **FREMANTLE, COOLGARDIE,**  
**KALGOORLIE, PERTH,**  
**MENZIES, CUE,**  
**NORSEMAN.**

# Drs. FREEMAN & WALLACE,

(Legally Qualified and Registered),

*Corner Elizabeth and Bathurst Streets, SYDNEY.*

## That these Noted Specialists

and pre-eminently at the head of the Medical Profession is no longer a question of doubt. That they have investigated further into the mysteries of life, and penetrated deeper the secrets of disease than their quite worthy but less successful associates, is now acknowledged by all. Their experience is lifelong, and their record

## Is a Series of Professional Triumphs.

There are thousands upon thousands in this land to-day who are praising their names because they have made their lives happy and brought sunshine into their homes.

**YOUNG MEN,** If you are troubled with pimples, bashfulness, aversion to society, stupidity, despondency, loss of energy, ambition and self-confidence, and absolutely unfit for study, business or marriage—if you are thus afflicted you know the cause. Get well and be men.

**MIDDLE-AGED and OLD MEN,** there are thousands of you troubled with weak, aching backs and kidneys, frequent painful urination and sediment in urine, and other unmistakable signs of nervous debility and premature decay. Many die of this difficulty, ignorant of the cause, which is the second state of seminal weakness. The most obstinate cases of this character treated with unfailing success.

**PRIVATE COMPLAINTS.**—Inflammations, Hydrocele, Varicocele, and kindred troubles quickly cured without pain and detention from business.

**MAIL.** By this means you can describe your troubles to the Doctors if living away from the city and unable to come to their office. Treatment in this manner is always satisfactory. Write for valuable treatises, **NERVOUS AND PRIVATE DISEASES**, post free on application. A perusal of them might save much mental and physical suffering and add golden years to your life. To ensure prompt attention, forward £1 by mail, and full description of your complaint, and we will at once send necessary remedies for treatment of your ailment.



All Trams stop at the Door.

**Drs. FREEMAN & WALLACE,**  
**CORNER ELIZABETH AND BATHURST STREETS, SYDNEY.**  
**Correspondence P.O. Box 1359.**

**NIGHT** Diplomas and Certificates of qualification and registration adorn the walls of the Consulting Rooms.

**IF WE CANNOT CURE YOU NO ONE CAN.**

PLEASE MENTION THIS CATALOGUE.



IRIS

# THE FIRST COMPLETE CHEMIST'S PRICE LIST

PUBLISHED IN W.A.

POST FREE.

Prices will astonish you. Call or send for one. I am not connected with any firm company of chemists, or their branches, and am the only chemist trading under the undermentioned name in W.A. All orders & letters should be addressed to

**GEO. E. ARMSTRONG,**  
CITY PHARMACY,

398 HAY STREET, Opposite Arcade

(Which is my ONLY Address in W.A.)

DR. McLEAN'S

DR. JAMES'

**Pepsine Bismuth & Nux Vomica Mixture,**

CONCENTRATED FLUID EXTRACT

**SARSAPARILL**

With DANDELION POTASH and PODOPHYLLIN.

Price 3/-

A palatable form of three drugs so valuable in weak and Dyspeptic Indigestion.

3/-



TRADE

MARK

(Registered)

This Trade Mark printed on all my Original Sydney Medical Remedies and Preparations, without which none are genuine.

DR. OLIVER'S  
**RED APERIENT DRAUGHT**  
(Registered)

12 Doses Removes Acidity, Papillation from Indigestion, the Acid Slime from the Coat of the Stomach, Acids from the Kidneys, Chills Biliousness, Indigestion, Neuralgia, Rheumatism from Friction of the Liver, Bilious Headache—like magic. Is the Best Laxative for men and women. Price, 2/-

**SELOCS 'CAVAN' HEALING OINTMENT.**  
Cures of longstanding effected.  
**IRIS**  
TRADE MARK  
Invaluable for Old Leg Sores, Eczema, Scalds, Burns, Sunburn Chafes.  
Directions—Bathe the parts in warm water and dress on lint or clean rag twice or thrice daily.  
And all eruptions of the skin.  
**PRICE, 1s.**

**DAMIANA & KOLA NUT TONIC,**  
With Nux Vomica and the Hypophosphates For Brain and Nerves.  
Price, 3/-

**QUININE AND IRON TONIC,**  
DR. McLEAN'S PHOSPHATED  
OF CHINA  
Stoward's Ferri et

Manufacturer of the following:

Selocs Compound Syrup of Figs and Senna, 1/6  
Dr. James' Little Pink Liver and Kidney Pills, 1/-  
Dr. McLean's Great Effective Liver Tonic, 2/6  
Armstrong's Diarrhoea Wind and Spasm Mixture, 2/-  
Selocs' Saffron Mixture for the Kidneys and Liver, 3/-  
Plymouth Mixture—Urthral Affections, 3/6  
Selocs Barcoo Blood Purifier Effective, 2/6  
The "Cavan" Cough Remedy (chronic coughs), 2/-  
Dr. Oliver's Cough Elixir (throat & head), 1/-, 1/6, 3/6  
Armstrong's Effective Balsamic Cough Mixture, 2/-  
Armstrong's Asthma Powders (instant relief), 1/6  
Armstrong's Famed Sydney Medical Remedies.

Selocs "La Grippe" Influenza Mixture, 2/-  
Armstrong's Compound Phosphorus Pills, 4/-  
Selocs Magic Australian Eye Lotion (never fails), 2/-  
Selocs Golden Eye Ointment, 1/-  
The "Iris" Sulphur Hair Restorer (very effective)  
Selocs Wonderful Scurf and Dandruff Pomade,  
Armstrong's "Cura Clava" Instant Corn Cure,  
Rock Cement, 1/-; Tooth Anodyne, 1/-  
Trusses, Enemas, Belts, Electric Appliances.  
New Drugs, Chemicals and every known preparation.  
Depôt for Dr. Hall's Hygienic Douches, from

THE "IRIS"  
**LAVENDER WATER.**

THE "IRIS"  
**CARBOLIC TOOTH POWDER**

THE "IRIS"  
**GLYCERINE & CUCUMBER JELLY.**  
In pots 9d 1/3 In pots 9d 1/3

THE "IRIS"  
**HAIR RESTORER.**  
3/6 Restores Grey Hair 3/6

THE "IRIS"  
**MAGIC HAIR DYE, Any Colour.**

THE "IRIS"  
**CUCUMBER & ELDER FLOWER CREAM.**

SELOCS HEADACHE CURE, 1/- Box.  
DR. McLEAN'S GARGLE & MOUTH WASH, 2/-  
SELOCS CHILDREN'S

SELOCS MEASLES MIXTURE, 1/6  
RHEUMATIC AND GOUT DROPS, 1/6  
WORM SYRUP, 1/6.

The above preparations are prepared Only by

**GEORGE EDWARD ARMSTRONG, Chemist**

**HIGH CLASS PHOTOGRAPHY**

PLATINOTYPE, ENLARGEMENTS, BACK WHITE, or Colours in Water Oils.

**LARGEST STOCK VIEWS IN W.A.**

**ALLIE SENIOR**

**GREENHAM & EVANS**

PLATINOTYPES A SPECIALTY.

**LILLIES**



# "VITADATIO"

HAS COME TO . . . . .  
WESTERN AUSTRALIA . . .

AND WILL CURE YOU OF YOUR COMPLAINT.

A Wonderful  
Discovery is

"Vitadatio."

It will Cure you (without operation) even where the most eminent doctors of London or Melbourne—or any other part of the world—have failed,

be it

BRIGHT'S DISEASE, CANCER, HYDATIDS, CONSUMPTION, PILES, GALL STONES, LIVER or KIDNEY COMPLAINT, GRAVEL, STRICTURE, ECZEMA, RHEUMATISM, GOUT, SCIATICA, INDIGESTION, &c., &c.

For Testimonials of others that have been cured, write or send to the Agent, S. A. PALMER, 481 HAY STREET, PERTH.

**A THOROUGH CURE IS GUARANTEED.**

The sum of £500 (five hundred pounds) will be paid to anyone that can refute any Testimonial in circulation about

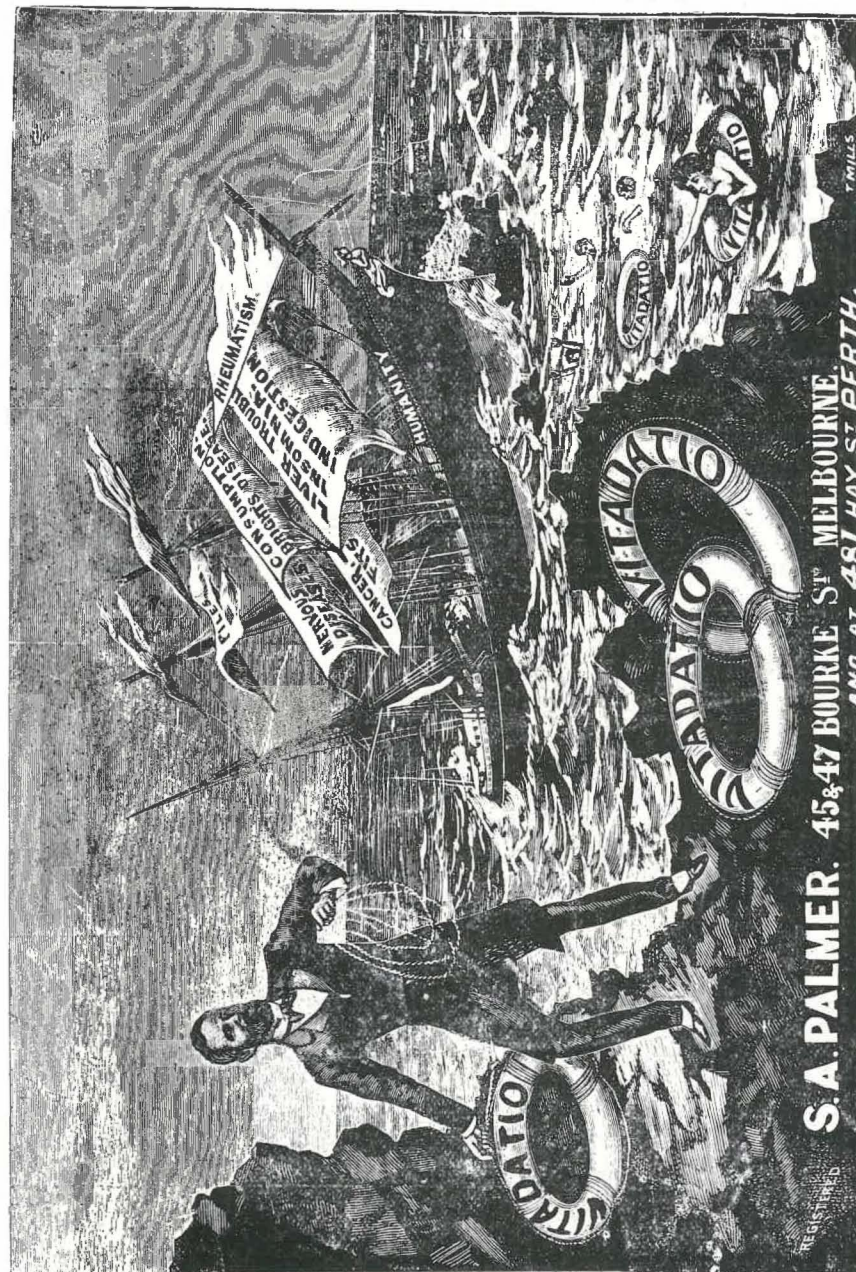
**"VITADATIO."**

Mr. O'Brien, who for the last thirty-four years has been foreman at Messrs. Kitchen & Sons' factory, Port Melbourne, was interviewed by a reporter on 8th August. The reporter started off—"I hear you have been very ill." "Yes; I suffered very much during the last three years with rheumatic gout. I was so bad that I had to leave work, and was confined to my bed. I thought I would never get better, as I am 70 years of age. I tried many remedies (so-called) advertised, but I gradually grew worse. A friend advised me to try Webber's "VITADATIO," and I am glad I did, for it completely cured me. I feel as young as I did twenty years ago. I can honestly recommend "VITADATIO" as a grand medicine. Anyone who desires a personal interview with me may rest assured of a hearty welcome."

Mr. W. H. Bath, who has been a member and office-bearer of Wesley Church during the last twenty years, and whose address is 102 Lygon Street, Carlton, writes as follows:—"I suffered during the last twenty years from the effects of Liver Complaint and Constipation. I was frequently compelled to leave off work. My friends all know how I suffered. I tried almost everything that was advertised to cure my complaint, and at times consulted doctors. The medicines all failed to cure me, and the doctors' treatment did me very little good. I began to despair, but my wife, hearing from a relation about the wonderful curative properties of "VITADATIO," how it had cured many people in New Zealand, urged me to try it. I had been laid up some time from the effects of a bad turn eight months ago. My wife called upon the Agent (Mr. Palmer), and he persuaded her to take a bottle. It acted like a charm. I was able to return to my work before I had finished it. I continued using it, taking five more bottles, and I am thankful to say I have quite regained my long lost health. I thank God such a medicine has been found. I will be pleased to answer any inquiries. Thanking you for your medicine, and wishing you success.—I remain, yours faithfully, W. H. BATH."

For Testimonials of those that have been cured write or send to the Agent, S. A. PALMER. Price of medicine is 5s. 6d. and 3s. 6d. per bottle. Ask your chemist or grocer for it.

Head Institute for Western Australia—481 HAY STREET, PERTH.  
G. JOHNSON, BAYLEY STREET, COOLGARDIE, Local Agent for "VITADATIO."

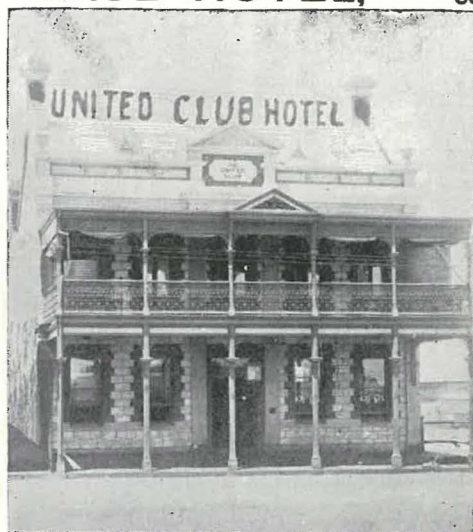


S. A. PALMER. 45 & 47 BOURKE ST. MELBOURNE.  
AND AT 481 HAY ST. PERTH.



# UNITED CLUB HOTEL, Opposite Railway Station, COOLGARDIE.

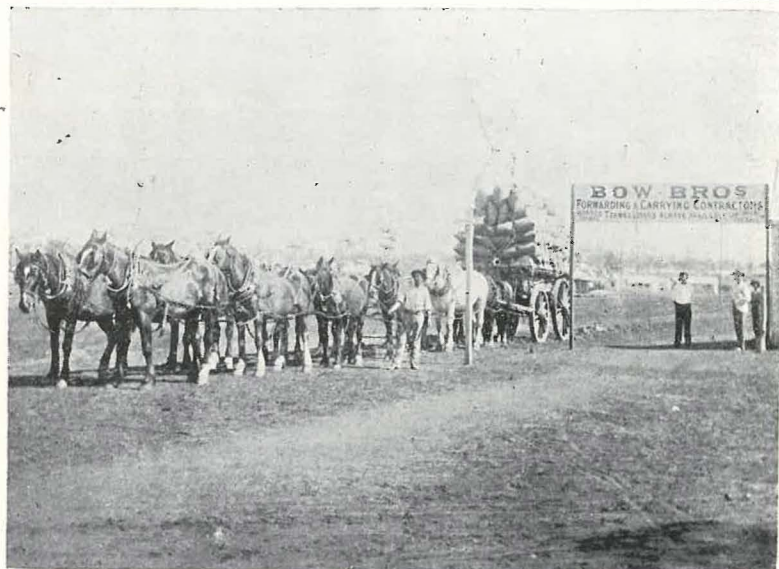
**UNITED CLUB HOTEL,  
BAYLEY STREET, COOLGARDIE**  
(Opposite Railway Station).  
**THE LEADING FAMILY HOTEL.**



**UNITED CLUB HOTEL,  
COOLGARDIE.**  
LARGE AND AIRY DINING-ROOM.  
FIRST-CLASS TABLE.  
Only Best Brands of Wines and Spirits.

PORTER MEETS ALL TRAINS.

**UNITED CLUB HOTEL, BAYLEY STREET,  
COOLGARDIE.**  
Mrs. A STELLWAG, Manager.



## **BOW BROS. FORWARDING & CARRYING CONTRACTORS**

Having the Largest Carrying Plant on the Goldfields, are prepared to undertake Contracts for Receiving and Delivering Mining Machinery and Goods of all descriptions to all parts of the fields. Special Prices Quoted for Removal of Mining Plants. Horses Bought or Sold. Large Stock of Horse Feed always on hand. Correspondence promptly attended to.

TELEPHONE 83.

**SHAW STREET, COOLGARDIE.**



PERTH PREMISES.

## **RICHARD HOLMES & Co., Merchants.**

**HEAD OFFICE:**  
**346-352 MURRAY STREET,  
PERTH.**

**BRANCHES:**  
**COOLGARDIE.  
KALGOORLIE.**

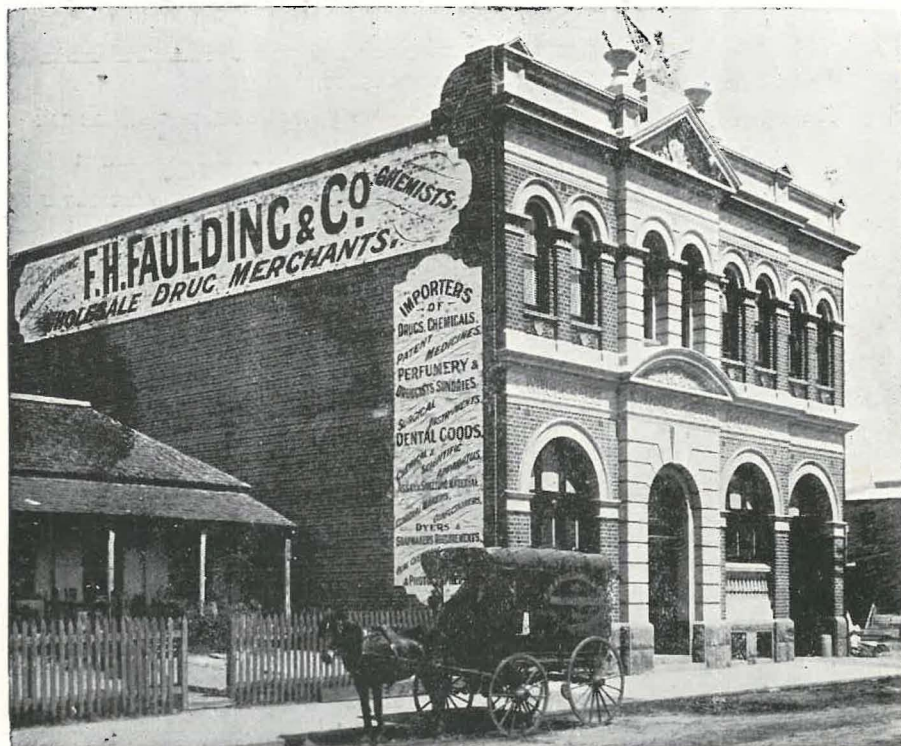
*Carry Large Stocks of*  
**GROCERIES, OILMEN'S STORES, AND PRODUCE.**

REFERENCE: BANK OF AUSTRALASIA.

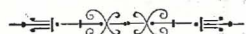
### AGENTS FOR:

THAMES AND MERSEY MARINE INSURANCE CO.,				
OF LONDON	.	.	.	.
ECONOMY CREAM	.	.	.	.
UGALLA AND SELANA TEA	.	.	.	.
GERMEA	.	.	.	.
ROSEWARNE MEAT COY'S (SYDNEY) PRESERVED				
MEATS	.	.	.	.
"BLACK HORSE" VESTAS, &c., &c.	.	.	.	.





We wish to call the special attention of Visitors to the Exhibition to our Exhibit of our well known Household Remedies, and also to the display of Carbolic Acid Preparations exhibited by us on behalf of Messrs. F. C. Calvert & Co., Manchester.



**F. H. FAULDING & CO.,**

**341-3 MURRAY ST., PERTH.**

## BANK OF NEW SOUTH WALES.

COOLGARDIE BRANCH - WILLIAM BIRNIE, Manager.

HEAD OFFICE, SYDNEY,  
With Branches throughout  
the Colonies, also at  
London.

WESTERN AUSTRALIAN  
BRANCHES:

CHIEF OFFICE, PERTH  
FREMANTLE  
COOLGARDIE  
KALGOORLIE

Paid-up Capital	.. £1,950,000
Reserve Fund	.. 1,200,000
Reserve Liability of Proprietors	.. 1,950,000
	<hr/> £5,100,000



## GOULY & SON,



**THE** ADVERTISING AGENTS  
OF THE  
GOLDEN WEST . . . .

PUBLISHERS of the OFFICIAL CATALOGUE and of  
THE WEALTH AND PROGRESS OF W.A.

BY SPECIAL APPOINTMENT,  
UNDERTAKE ALL ADVERTISING BUSINESS.

Our Motto is:—"WE DO NOT STOOP TO CONQUER."

ADDRESS: 385 ST. GEORGE'S TERRACE, PERTH.



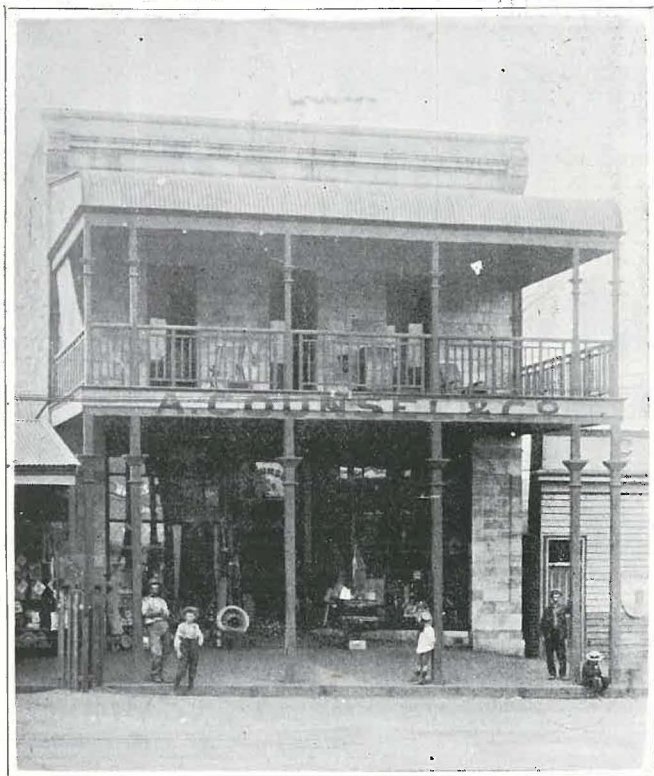
# A. COUNSEL & CO.,

WHOLESALE AND RETAIL

BUILDERS' MATERIAL **Grocers, Ironmongers and**  
AND  
IRONMONGERY  
AT  
WHOLESALE RATES. **Wine & Spirit Merchants,**

**BAYLEY STREET, COOLGARDIE.**

Mining Material of every Description.



Galvanized, Corrugated and Plain Iron  
Ridging, Spouting, &c.  
Carriage Ware  
Oils, Paints and Dry Colours  
Glass—Plain and Coloured  
Bedsteads and Cots  
Wire Mattresses  
Bentwood Furniture

Paperhangings  
Holloware  
Crocery and Glassware  
Bellows, Anvils, etc.  
Picks and Shovels of every description  
Whip Wheels  
Rope—Wire and Manilla  
Gas and Engine Fittings.

A SPLENDID STOCK OF CARPENTERS' TOOLS.

We are Direct Importers of all kinds of Merchandise.

The Oldest Established House on the West Australian Goldfields.



COOLGARDIE COUNCIL, 1899,

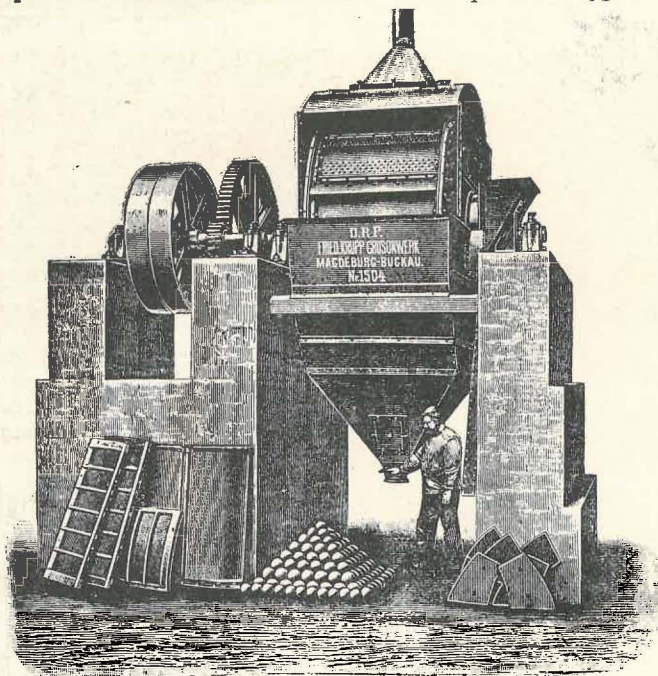


# FRIED. KRUPP GRUSONWERK,

Magdeburg-Buckau (Germany.)

## MINING MACHINERY.

**Stamp Batteries** Shoes and Dies of Special Krupp Steel.



**Patent Ball Mills,** for Dry or Wet Crushing.  
MORE THAN 1700 AT WORK.

Crushing and Grinding Machinery of Every Kind.

**Dry Separating Plant** . . . **Amalgamating Machinery** .  
**Concentrating Machinery** . . . **Leaching Plant** . . . .

Complete Plant for Treating Ores of Every Description.

*Large Experimental Station for Crushing and Dressing Ores at the Works.*

**Agents** for Victoria, Tasmania, South Australia, New South Wales and New Caledonia:  
NOYES BROTHERS, 15 Queen Street, Melbourne; 12 O'Connell Street, Sydney (N.S.W.)  
For Queensland: HOYER, TIEGS & CO., Brisbane.



## H. & H. WITHNELL

Engineering, General Blacksmiths & Wheelwrights,

### FOUNDRY DEPARTMENT.

### NORTHAM.

We are prepared to execute every description of CASTINGS in IRON, PHOSPHOR BRONZE, ALUMINIUM BRONZE, and GUN METAL.

We are prepared to supply ANTI-FRICTION METAL for every description of BEARINGS or ENGINE and PUMP PACKING.

Highly commended by leading Millers and Engineers.

BUILDERS' IRONMONGERY a Speciality.

### MACHINERY DEPARTMENT.

PLOUGHS, STRIPPERS, Damp and Ordinary, and all other AGRICULTURAL MACHINERY kept in stock, or made to order on SHORTEST NOTICE.

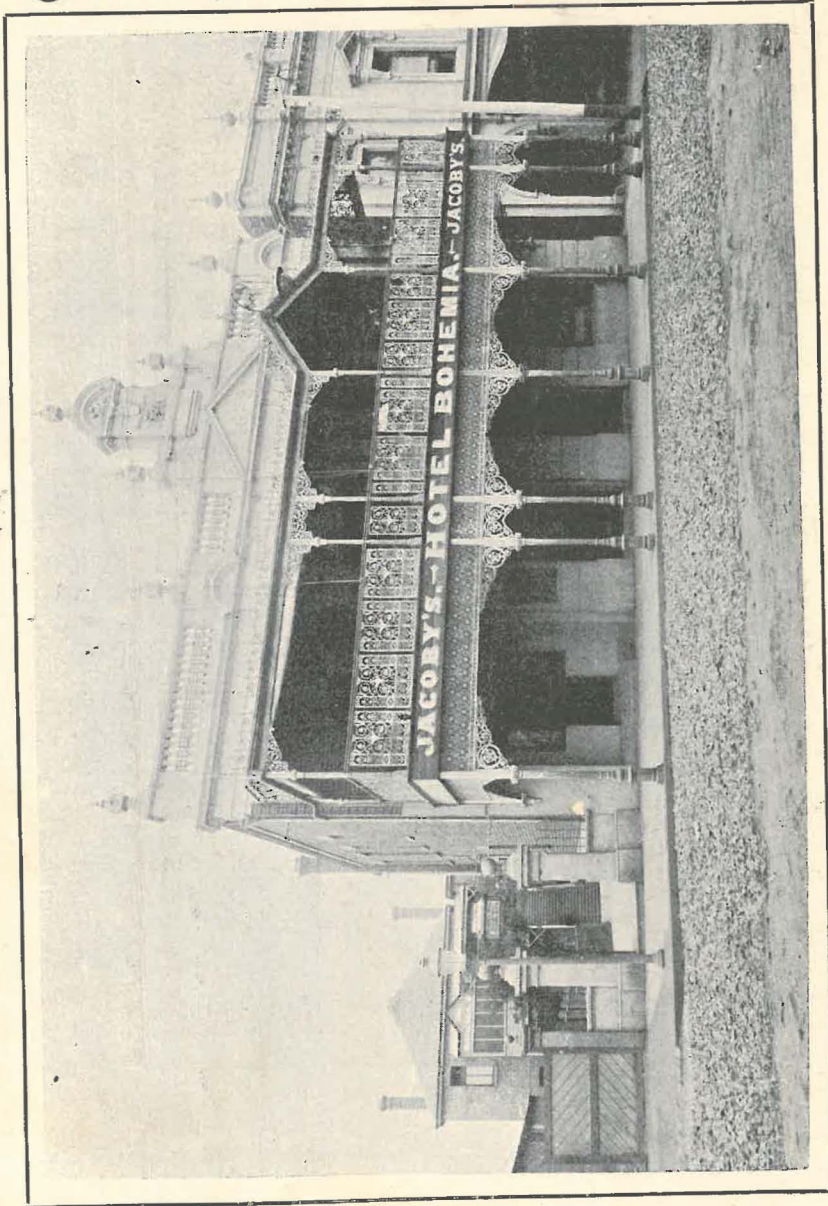
Local Agents for "HORNSBY" BINDERS and other Machinery.

BUGGIES, DRAYS, WAGONS, SPRING DRAYS, &c., built to any design.

ALL COMMUNICATIONS ADDRESSED TO **H. & H. WITHNELL** WILL RECEIVE PROMPT ATTENTION.



# Jacoby's Hotel Bohemia,

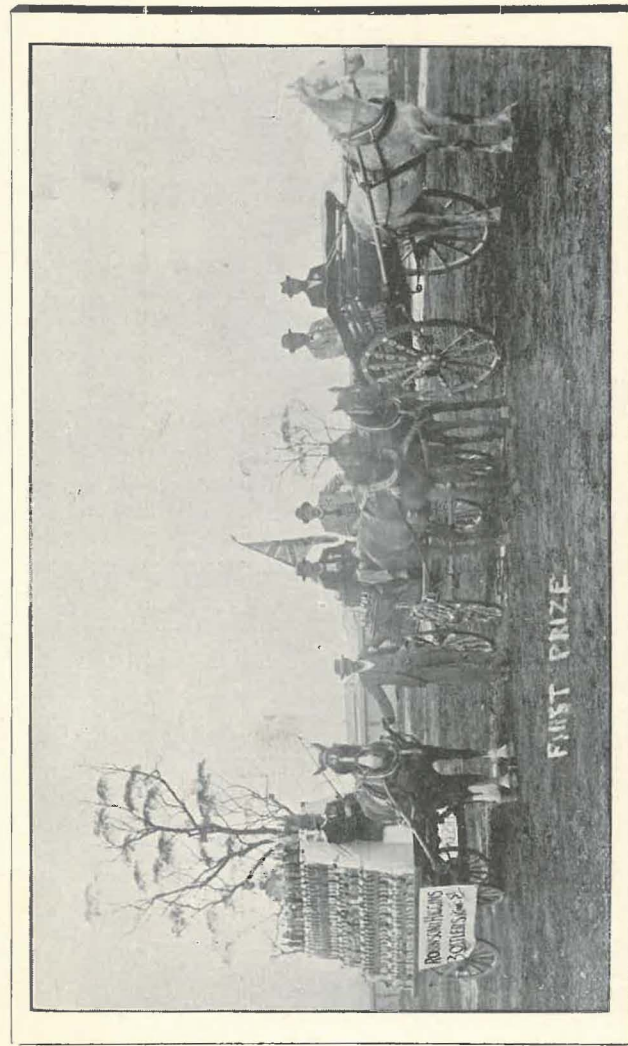


**Murray Street, Perth.**

**ROBINSON & HIGGINS, Bottlers, King Street, Coolgardie.**

**Cordial and Vinegar Manufacturers.**

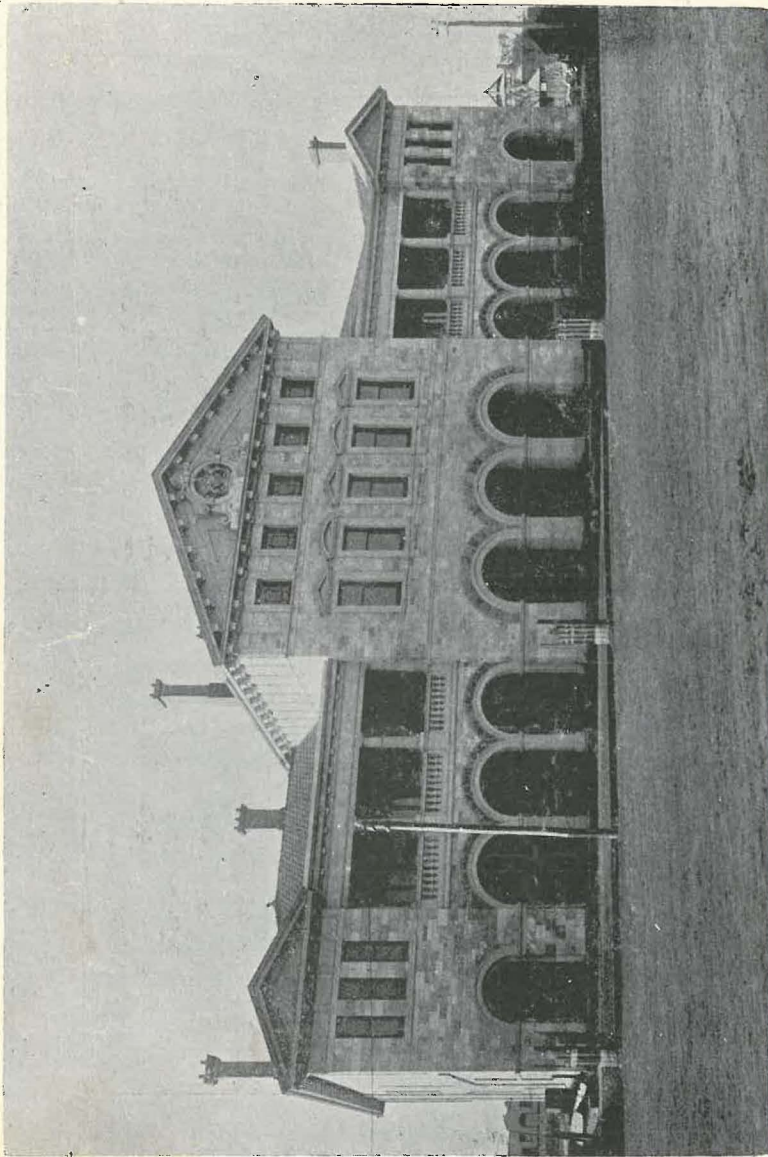
**Aerated Waters. Hop and Ginger Beers.**



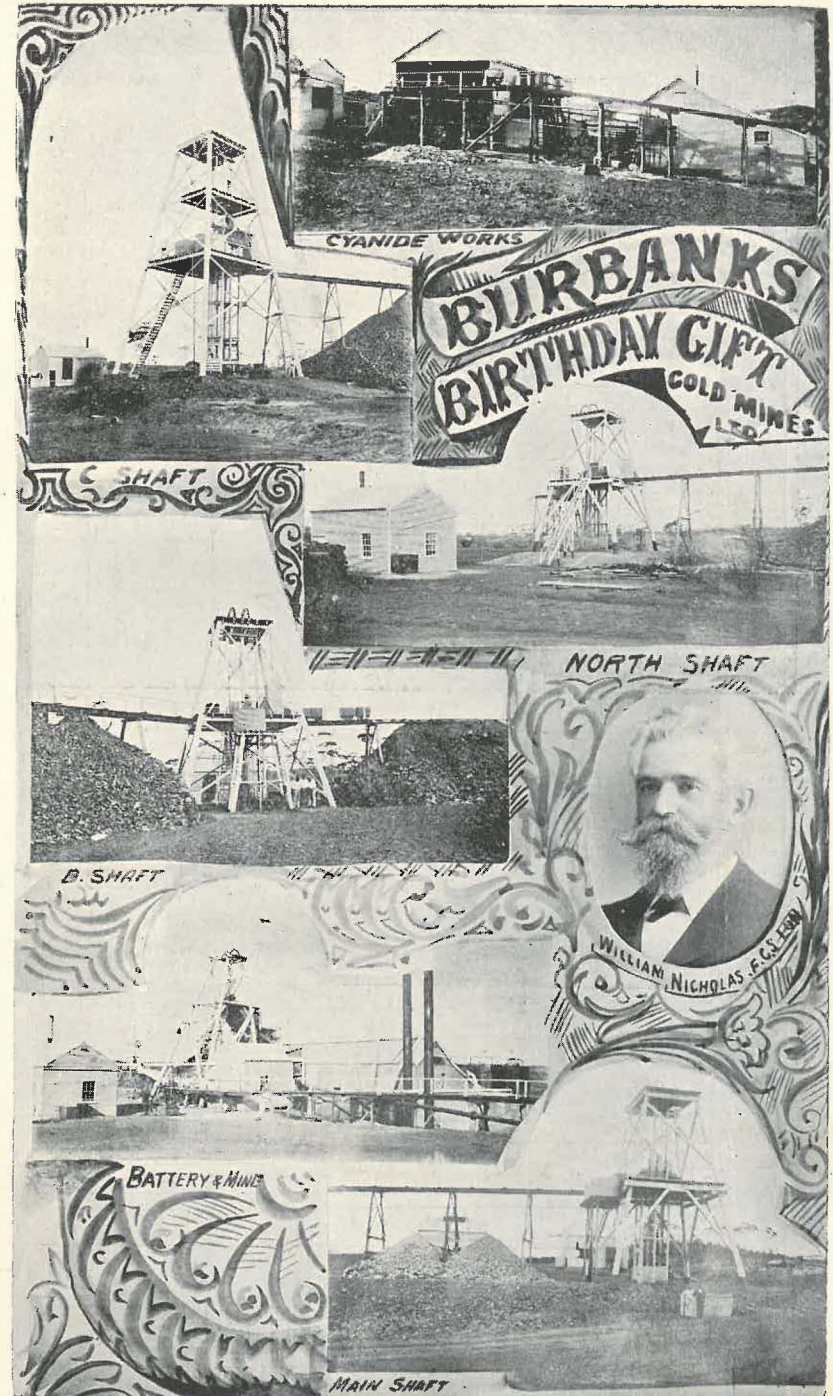
**The Grand Prize Ale and Stout and Wine.**

Telephone No. 148.





THE COURT HOUSE, COOLGARDIE.







**S. CAWTHRAY, M.P.S., R.D.S.,**  
COOLGARDIE.

TELEPHONE 94,  
CONNECTED WITH KALGOORLIE.

CABLE ADDRESS: "BARRETT" TO 30-6-99,  
AFTER THAT DATE "COMPLEX."

## HAROLD E. BARRETT

(SUCCESSOR TO J. HOWARD TAYLOR),  
**SHAREBROKER,**

Attorneyships and Company Management  
... undertaken ...

**Agents**

Messrs. CLARKE & CO. - ADELAIDE .

„ MENZIES & MOULE - MELBOURNE.

„ F. THONEMANN & CO. „

R. H. BARRETT - PERTH .

LONDON—A leading firm of Mining Brokers.

BANKERS—NATIONAL BANK.



Patronized by the Government.



# LYSAGHT'S GALVANIZED IRON.

IS  
THE  
BEST

"ORB" CORRUGATED IRON, for ROOF-  
ING and other purposes, every Sheet  
being guaranteed.

"QUEEN'S HEAD" SPECIAL FLAT  
SHEETS, for "working-up" purposes,  
used in all the principal goldfields of West  
Australia for the making of "CONDENSERS."

OBTAINABLE EVERYWHERE.

BEWARE OF UNBRANDED OR OTHER IMITATIONS

The COOLGARDIE EXHIBITION, all the principal Public Build-  
ings, and the great majority of the Private Residences in West Australia  
are covered with LYSAGHT'S "ORB" GALVANISED CORRUGATED ROOFING  
Iron, which is the recognised standard for Galvanized Iron throughout the  
civilized world.

CAUTION—Buyers are specially cautioned that there are numerous  
brands of Galvanized Iron on the market in which the protecting Zinc is so  
thin that the durability of the sheet is seriously prejudiced.

LYSAGHT'S "ORB" Brand can easily be recognised by its smooth  
surface, thicker galvanized coating, uniform quality and good lap, every  
sheet of which is branded.

The BEST is the CHEAPEST.



ASK FOR

**BUNBURY BOTTLED ALES**

THE

**TERRIER BRAND.**

NO OTHER BRAND GENUINE.

BOTTLED AT THE BREWERY

ONLY BY

**MATH. E. WALLIS,**

PROPRIETOR,

*Bunbury Bottling Works.*

**W. PROSSER,**

BUNBURY.

Renowned Tannery & Boot Manufacturing Co.,

FOR

**HARNESS AND BELTING  
LEATHER.**

*The Best and Cheapest in the Colony.*

**OUR PUMP LEATHER GIVES BEST WEAR.**

THE DIGGERS' BOOTS MADE AT OUR MANUFACTORY

NEVER WEAR OUT.

**Wholesale & Retail.** Send for Prices and Samples.



# The Imperial Jarrah Wood Corporation

LIMITED.

GENERAL MANAGER: H. J. YELVERTON. SECRETARY: F. O. BENCKENDORFF.

HEAD OFFICE:

9 ST. MILDRED'S COURT, POULTRY, E.C., LONDON.

MILLS:

*Quindalup. Newlands. Bunbury.*

Quotations for—

JARRAH.	.	.	.	.	.
PILES (any length)	.	.	.	.	.
SLEEPERS	.	.	.	.	.
BUILDING AND BRIDGE TIMBER.	.	.	.	.	.

APPLY TO—

**THE IMPERIAL JARRAH WOOD CORPORATION**  
LIMITED,  
**BUNBURY.**

# ROSE HOTEL, BUNBURY.

J. C. ILLINGWORTH, PROPRIETOR.

This commodious Hotel has been recently enlarged, and is now one of the finest in the Southern Hemisphere.

**Mr. J. C. ILLINGWORTH**

Has had it fitted with all modern conveniences, and is now in a position to offer the best accommodation in Bunbury to intending visitors.

CONVENIENT TO BOTH RIVER AND OCEAN BEACH.

Fishing, Shooting, Lovely Drives.

ONLY THE BEST BRANDS OF LIQUORS KEPT IN STOCK.

WRITE AND SECURE ROOMS.

Large Sample Rooms for Commercial Travellers.  
Under the Sole Management of

J. C. and Mrs. ILLINGWORTH.







GLOBE MEATS—Cheaper and Better than much of the fresh meat obtainable.

## CLASS 76.

*De Lameter-Errisson hot air pumping engine.*

1. BENNIE, TEARE & CO., Woodward Street, Coolgardie.  
Ed. J. Bahen, Manager; H. L. Gill, Engineer.

## CLASS 78.

1 *Steel locomotive crank axle—finished.*

1 *Cast steel wheel centre.*

1 *Steel straight axle—finished.*

1 *Steel wagon tyre.*

1. THOS. FIRTH & SONS, LTD., Norfolk Works, Sheffield.  
H. Watson Williams, Essex Street, Fremantle, agent.

*High class rubber driving belts, pulleys, countershafting and gear.*

1. A. F. WILLIAMSON, 84 William Street, Perth.

*Shafting, bearings. Smith's patent pulleys. Various belting. Injectors. Feed pumps. Boiler mountings of all kinds.*

1. BENNIE, TEARE & CO., Woodward Street, Coolgardie.  
Ed. J. Bahen, Manager; H. L. Gill, Engineer.

## GROUP XII.

CONSTRUCTION AND ARCHITECTURE, SANITARY APPLIANCES, AERONAUTICS.

## CLASS 82.

*P. and B. ruberoid roofing. P. and B. damp course. P. and B. paints. P. and B. armature varnish. P. and B. pile felt. P. and B. pipe dip, &c.*

1. E. RICH & CO., LTD., 24-60 O'Connell Street, Sydney, N.S.W.  
J. R. Reid, Secretary.

COSSON & MACKENZIE keep the largest assortment of English Tweeds and Coatings on the Fields.

YANKEE DOODLE TOBACCO.



**GLOBE CANNED MEATS**—Renowned for their excellent flavour and Superior Quality.

CLASS 82.—(CONTINUED.)

*House construction and building materials, roofs, wall, ceilings, damp-courses, damp-proof wall coverings*

1. E. RICH & CO., LTD., Sydney, N.S.W. J. M. Ferguson, Ltd., Agents.

CLASS 83.

*Mechanical India Rubber Goods,—Beltings, hoses, &c., &c.*

1. INDIA RUBBER, GUTTA PERCHA & TELEGRAPH WORKS, LTD., St. George's Terrace, Perth, per Jno. McLean.

**GROUP XIII.**

**WOMEN'S INDUSTRY.**

CLASS 84.

*Ladies' and children's underclothing, millinery, &c., &c.*

1. JAMES C. MCKAY, Bayley Street, Coolgardie.

*Art work. Hand made quilt.*

1. A. HIGGINS, Evelyn Road, Claremont, W.A.

*Woolwork.*

1. FANNY DARLEY, Montana, Coolgardie.

CLASS 86.

*Curtains, wall decorations, &c.*

1. JAMES C. MCKAY, Bayley Street Coolgardie.

*Carving on wood—Exhibited in York Court.*

1. MISS MAY ANDREWS, York, W.A.

COSSON & MACKENZIE for Perfect Fit for ANY style of Garment

**KANDY KOOLA TEA**—Obtainable Everywhere.

CLASS 87

*Xmas, New Year, birthday and presentation cards.* Mounted in West Australian wild flowers, engraved in gilt lettering, with suitable verses, mottoes, &c., and decorated with fancy ribbons.

1. MRS. ARMA BLIGHT, Elmes Street, Geraldton, W.A.

*Fine art decorative ceramic and decorative work.*

1. RACHEL M. STANWIX, Richardson Street, Toorak, Coolgardie.

**GROUP XIV.**

**TIMBERS.**

CLASS 88.

*Building timber.*

1. THE JARRAHDAL JARRAH FORESTS AND RAILWAYS, LTD., per T. Stoddart & Co.

CLASS 89.

*Ornamental timber.*

1. THE JARRAHDAL JARRAH FORESTS AND RAILWAYS, LTD., per T. Stoddart & Co.

CLASS 90.

*Mining timber.*

1. THE JARRAHDAL JARRAH FORESTS AND RAILWAYS, LTD., per T. Stoddart & Co.

COSSON & MACKENZIE for Perfect Fit for ANY style of Garment.

Dixson's No. 1 CIGARETTES ARE Absolutely Pure.

YANKEE DOODLE TOBACCO.



KANDY KOOLA TEA—The most powerful recommendation is that the Consumption in Western Australia was doubled during 1898.

## GROUP XVI.

### FERMENTED AND SPIRITUOUS LIQUORS, &c.

#### CLASS 92.

*"Bon Accord" Whisky.*

1. JAMES McDOUGALL & CO., Glasgow. A. Counsel & Co., Agents.

*Bulk and bottling whisky.*

1. JOHN ROBERTSON & SON, LTD., Dundee. Lionel Samson & Son, Cliff Street, Fremantle, Agents.

*Bulk and bottling gin.*

1. JOSEPH & JOHN VICKERS & CO., LTD., London. Lionel Samson & Son, Cliff Street, Fremantle, W.A., Agents.

*Pure grape brandy.*

1. THE ADELAIDE WINE CO., LTD., Chateau Tanunda, South Australia.

*Old Port Wine of 1876 vintage—wine of South Australia.*

1. H. J. SCOTT & SONS, Bindarra Vineyard, South Australia.

*Claret, Port, Chablis, Sherry—wines of South Australia.*

1. AULDANA VINEYARD PROPRIETORS, South Australia.

*Port, Sherry, Claret, Chablis, Reising, Constantia and Frontignac—wines of South Australia.*

1. THE ADELAIDE WINE CO., LTD., Chateau Tanunda, South Australia.

*Sparkling Burgundy wine, South Australia.*

1. AULDANA VINEYARD PROPRIETORS, South Australia.

Go to COSSON & MACKENZIE for your Exhibition Suit,  
Bayley Street, Coolgardie.

JONES' No. 1 TASMANIAN JAMS—For Quality and Assortment they have an Unbeaten Record.

#### CLASS 92—Contd.

*Wines and spirits—Show case, 14ft. high, 14ft. 6in. long, 7ft. deep.*

1. JOHN ROBERTSON & SON, LTD., Dundee, Scotland. Lionel Samson & Son, Fremantle, Agents.

*Trophy of West Australian wines and vineyard products.*

1. THE MUNDARING VINEYARD COMPANY, LTD., West Australia. M. H. Jacoby, Manager.

*Wines and spirits.*

1. PECTOR & DUCOUT JNE., Paris. Léon Gibus, Manager, 541 Hay Street, Perth, W.A.

*London gin and champagne—wines and spirits.*

1. LIONEL SAMSON & SON, Cliff Street, Fremantle, W.A.

*Port wine—bulk and bottling.*

1. J. W. BURMEISTER, Oporto. Lionel Samson & Son, Fremantle, W.A., Agents.

*Champagne.*

1. G. H. MUMM & CO., Reims, France. Lionel Samson & Son, Fremantle, W.A., Agents.

*Colonial wines.*

1. W. J. BYRNE, Pakenham Street, Fremantle, W.A.

#### CLASS 93.

*Bottling ale and porter.*

1. E. RICHARDSON & CO., London. Lionel Samson & Son, Cliff Street, Fremantle, Agents.

*Beers, brewed in Western Australia.*

1. THE SWAN BREWERY COMPANY, LTD., Perth. W. Pike, Secretary, St. George's Terrace, Perth.

Harper's "Star" Coffee—Choice Breakfast Cup.

Dixson's No. 1 CIGARETTES ARE Absolutely Pure.

YANKEE DOODLE TOBACCO.



NESTLE'S VIKING UNSWEETENED MILK—Is the popular unsweetened throughout the Colony.

*Beers.*

1. WM. YOUNGER & CO., LTD., Edinburgh. Lionel Samson and Son, Fremantle, Agents.
2. ALEX. MELVIN & CO., Edinburgh. Lionel Samson & Son, Cliff Street, Fremantle.

*Ales, stout and tonic ale.*

1. NORSEMAN BREWERY COMPANY, Norseman, per Henderson & Macgeorge.

CLASS 94.

*Liqueurs.*

1. PECTOR & DUCOUT JNE, Paris. Léon Gibus, Manager, 541 Hay Street, Perth, W.A.

"Quinquina Dubounet." A medical preparation.

1. LUCIEN BENDA, Perth.

CLASS 95.

*Cordials and Syrups* in glass show case in centre of York Court.

1. H. E. MAN, York, W.A.

CLASS 97.

*Mineral Waters.*

1. PECTOR & DUCOUT JNE, Paris. Léon Gibus, Manager, 541 Hay Street, Perth.

"Zouave" Coffee—known all over W.A.

NESTLE'S SWISS MILK—Through its Superior Quality has obtained the Largest Sale in the World.

GROUP XVII.

FOOD PRODUCTS.

CLASS 98.

*Murray's Pasteurised milk.*

1. W. T. MURRAY & CO., Auckland, N. Zealand. G. Wood, Son & Co., Agents.

*Bovril—a preserved meat.*

1. BOVRIL CO., LTD., London. G. Wood, Son & Co., Agents.

*Tinned meats. Chilled meats. Tinned fruits. Preserved milk.*

1. PECTOR & DUCOUT JNE., Paris. Léon Gibus, Manager, 541 Hay Street, Perth, W.A.

*Tinned fruits—Lion brand*

1. D. & J. FOWLER, Adelaide and Fremantle.

*Preserved fruits and vegetables.*

1. SWALLOW & ARIELL, LTD., Melbourne. R. G. Turnley, Secretary.

*Canned meats, miners' lunches, corned tierced beef, meat and vegetables together, canned hogs' lard, canned beef dripping, barrels corned pork, Fritz sausages in liquid, Oxford sausages in liquid, Polony sausages in liquid, canned vegetables.*

1. L. CONRAD, Meat and Vegetable Preserving Works, Adelaide, S.A.

CLASS 99.

*Preserves.*

1. PECTOR & DUCOUT JNR., Paris. Léon Gibus, Manager, 541 Hay Street, Perth.

Agents, Robert Harper & Co. Proprietary Ltd., Fremantle.

Dixson's No. 1 CIGARETTES ARE Absolutely Pure.

YANKEE DOODLE TOBACCO.



**VIKING UNSWEETENED MILK**—Noted for its extreme richness, Purity and Excellent Keeping Qualities.

CLASS 99.—*Contd.*

*Dried fruits.*—Renmark "Ark" brand.

1. RENMARK FRUIT PACKING UNION, Renmark, South Australia. G. Wood, Son & Co., Agents.

*Yeatman's preserves and condiments.*

1. YEATMAN & CO., London. G. Wood, Son & Co., Agents.

*Pickles, sauces.*

1. SHELDRAKE & CO., London. G. Wood, Son & Co., Agents.

*Pickles, sauces, &c., in bottle.*

1. THOMAS COOPER NEAVES, Murray Street, Perth

*Preserves, as exhibited in York Court.*

1. MRS. R. GALLOP, York, W.A.

*Jams, jellies, sauces, preserved and dried fruits, &c., in glass show-case, centre of York Court.*

1. H. E. MAN, York, W.A.

*Anchor brand tomato sauce.*

1. G. WOOD, SON & CO., Adelaide and Fremantle.

*Raisins and currants, exhibited in York Court.*

1. MRS. S. MONGER, York, W.A.

*Jams, &c.*

1. W. PEACOCK & SONS, Melbourne. D. & J. Fowler, Agents, Adelaide and Fremantle.

*Pickles, sauces, &c.*

1. CROSSE & BLACKWELL, London. D. & J. Fowler, Adelaide and Fremantle, Agents.

*Pickles and Sauces—Gillards.*

1. D. & J. FOWLER, Adelaide and Fremantle.

Pioneer "Orange" Phosphate—A Delicious Cordial.

**GLOBE CANNED MEATS**—Command the largest Sale in the Colony.

CLASS 100.

*Flour, bran and pollard, as exhibited in York Court.*

1. CHARLES QUIGLEY, York.

2. C. EDWARDS, York.

*Rice, oatmeal, semolina, rolled oats, baking powder, self-raising flour, peppers.* Anchor Brand.

1. G. WOOD, SON & CO., Adelaide and Fremantle.

2. W. MANWICK, JUNR., York.

*Annatto seed, prepared annatto paste for dairy use.*

1. PLANTERS' ASSOCIATION OF CEYLON, Kandy, Ceylon.

*Flour made from Western Australian Wheat.*

1. JAMES BYFIELD, Gairdner Street, Northam.

*Farinaceous foods.*

1. PECTOR & DUCOUT, JNE., Paris. Léon Gibus, Manager, 541 Hay Street, Perth, W.A.

*Eclipse roller flour.*

1. JOHN DUNN & CO., Adelaide. G. Wood, Son & Co., Agents.

*Flour—Lion Brand.*

*Flour—Adelaide Milling Company's.*

*Flour—Lion Brand Self-Raising.*

1. D. & J. FOWLER, Adelaide and Fremantle.

*Biscuits, Cakes, Digestive Meal.*

*Flour—Self-Raising, Roller.*

1. SWALLOW & ARIELL, LTD. R. G. Turnley, Secretary.

*Cocoa, chocolate.*

1. FRY & CO., Bristol. D. & J. Fowler, Agents, Adelaide and Fremantle.

Agents, Robert Harper & Co. Proprietary Ltd., Fremantle.

Dixson's No. 1 CIGARETTES ARE Absolutely Pure.

YANKEE DOODLE TOBACCO.



JONES' No. 1 JAMS—The best Jam that Money can Buy, see that you get  
JONES' No. 1.

## CLASS 101.

*Teas, coffees, Anchor brand.*

1. G. WOOD, SON & CO., Adelaide and Fremantle.

*Symington's coffee essence.*

1. THOMAS SYMINGTON & CO., Edinburgh. G. Wood, Son & Co., Agents.

*Sugar, golden syrup and treacle.*

1. THE COLONIAL SUGAR REFINING CO. H. H. Symonds, Manager, Fremantle.

*Tea, cocoa and Ceylon products.*

1. F. G. A. LANE. Planters' Association of Ceylon, Kandy, Ceylon.

*Cocoa.*—Four samples are shown of Cocoa Beans ready prepared for shipment. The export of this product during 1898 amounted to 36,982 cwt.

1. PLANTERS' ASSOCIATION OF CEYLON, Kandy, Ceylon.

*Spices.*—Samples are shown of cinnamon, cardamoms, black and white pepper.

1. PLANTERS' ASSOCIATION OF CEYLON, Kandy, Ceylon.

*Tea.* This exhibit consists of samples of commercial teas from 64 estates, representing all the various districts in the island. The total export of tea from Ceylon in 1898 amounted to 119,769,071 lbs., of which some 15,000,000 lbs. were sent to the Australian colonies.

1. PLANTERS' ASSOCIATION OF CEYLON, Kandy, Ceylon.

*Coffee.* Samples of raw Arabian and Siberian coffee, also prepared coffee powder.

1. PLANTERS' ASSOCIATION OF CEYLON, Kandy, Ceylon.

Pioneer Custard Powders—Unexcelled.

JONES' No. 1 TASMANIAN JAMS—PRESTON & COMPANY, Fremantle, Agents.

## CLASS 101—Contd.

*Health Tea.*

1. S. KING & SON, Melbourne. A. Counsel & Co., Bayley Street, Coolgardie, Agents.

*Tea—Pouchong. Tea—Amgoorie. Coffee—Amgoorie.*

1. D. & J. FOWLER, Adelaide and Fremantle.

## CLASS 101A.

*Keen's Mustard. Patent Groats. Oxford Blues.*

1. KEEN, ROBINSON & CO, London.

*Chutneys, pickles, Indian condiments.*

1. THE GREAT EASTERN HOTEL WINE AND GENERAL PURVEYING CO., Calcutta. R. H. Robinson, Agent.

## GROUP XVIII.

## AGRICULTURAL PRODUCTS.

## CLASS 115.

*Wheat*—Exhibited in York Court.

1. WM. LOTT, York, W.A.
2. R. G. BURGESS, Tipperary, York, W.A.
3. JOHN SEABROOK, York, W.A.

*Most valuable new grains—wheat, Algerian oats, English, Cape and shinless barley, exhibited in York Court.*

1. J. H. MONGER & CO'S ESTATE, York, W.A.

*New grain—wheat, exhibited in York Court.*

1. H. F. & W. PENNY, Greenhills, York, W.A.

Agents, Robert Harper & Co. Proprietary Ltd., Fremantle.

Dixon's No. 1 CIGARETTES ARE Absolutely Pure.

YANKEE DOODLE TOBACCO.



GLOBE MEATS—PRESTON & COMPANY, Fremantle, Agents.

CLASS 134.

*Hams, mutton and pork.*

1. L. CONRAD, Meat and Vegetable Preserving Works, Adelaide. S.A.

*Hams, exhibited in York Court.*

1. C. A. HARVEY & CO., York, W.A.

CLASS 135.

*Bacon, exhibited in York Court.*

1. C. A. HARVEY & CO., York, W.A.

CLASS 171.

*Remedy ailments for live stock.*

1. THE LIVE STOCK AILMENTS PROPRIETARY CO., LTD.  
Menzies, Robinson & Co., Bayley Street West, Agents.

IMPLEMENTS AND MACHINERY USED IN  
AGRICULTURE.

CLASS 173.

*Ploughshares, malleable, cast and cast steel. Malleable castings.*

1. H. J. KEIPERT & CO., Crown Foundry, Laura, S.A.

CLASS 186.

*Hides, tanned ready for market—On wall York Court.*

1. RONALD McKAY, York, W.A.

"Mariwari" Ceylon Tea, in 5, 10 and 40lb. Tins.

ASK FOR GLOBE BRAND OF MEATS & INSIST ON GETTING THEM.

GROUP XIX.

AGRICULTURAL PRODUCTS.

CLASS 189.

*Chaff (wheaten)—Exhibited in York Court.*

1. R. G. BURGESS, Tipperary, York, W.A.
2. J. & W. PARKER, York, W. A.
3. J. H. MONGER & CO.'S ESTATE, York, W.A.
4. MARWICK BROS., York, W.A.
5. WM. LOTT, York, W.A.
6. JOHN SEABROOK, York, W.A.
7. H. F. & W. PENNY, Greenhills, York, W.A.

*Cold storage and refrigerating insulation, pipe dip.*

1. E. RICH & CO., LTD., Sydney, N.S.W. J. M. Ferguson, Ltd., Agents.

*Bonedust, neatsfoot oil.*

1. L. CONRAD, Meat and Vegetable Preserving Works, Adelaide, S.A.

*Map. Education Department space.*

1. N. SALMON, Eumeralla Ladies School, St. George's Terrace, Perth, W.A.

*Map. Education Department space.*

1. G. WILLIS, Eumeralla Ladies School, St. George's Terrace, Perth, W.A.

*Plaque—Oil Painting, Education Department space.*

1. M. WILKINSON, Eumeralla Ladies School, St. George's Terrace, Perth, W.A.

*Rubber stamps, cement (stratina) empress needle, great invention and novelty.*

1. JAMES ADAMS, Exhibition No. 2 Court, Auckland, N.Z.

Agents, Robert Harper & Co. Proprietary Ltd., Fremantle.



JONES' No. 1 JAMS—Absolutely the finest quality manufactured from Fresh Fruit and Pure Cane Sugar only.

CLASS 189.—Contd.

*Collections of silver, brass, copper ware. Ivory and tortoiseshell work. Kalutara basket work. Galle lace and Ceylon curios.*

1. PLANTER'S ASSOCIATION CEYLON, Kandy, Ceylon.

*Samples of milled poonac, or cocoa-nut cake. Used for feeding stock, and largely exported for that purpose.*

N.B.—This cake is the residue of copra after the oil has been extracted.

1. PLANTER'S ASSOCIATION OF CEYLON, Kandy, Ceylon.

*Samples of kapok, or tree cotton, also silk cottons.*

1. PLANTER'S ASSOCIATION OF CEYLON, Kandy, Ceylon.

*Handsomely carved nadum wood book case, chairs, tables, &c., of native manufacture.*

1. PLANTER'S ASSOCIATION OF CEYLON, Kandy, Ceylon.

*Miner's boots.*

1. HARRY WALKER & SONS, LTD., Leeds. Agents: Monger's West Australian Stores, Ltd. W. E. Raine, Manager, Coolgardie.

*Specimens of Joinery, etc.*

1. COOMBE, WOOD & CO., LTD. J. S. Sturrock, Secretary.

*Inside Venetian blinds (enamelled). Outside Venetian blinds (with iron rods and facias). Spring roller blinds.*

1. H. W. HODGSON & SON, Murray Street, Perth.

*Glass case containing stationery, account books, envelopes, etc., local manufactures.*

1. WILLIAM DETMOLD, LTD. G. M. Hird, Fremantle, Agent.

*Gentlemen's linen shirts (to order). Silk pyjama suits.*

1. PARKER & CO., King William Street, Adelaide, S.A.

*Complete exhibit of boots, shoes, &c.*

1. THE JOHN HUNTER CO., LTD., Murray Street, Perth.

Harper's Star "Avena," for Porridge.

NESTLE'S MILK—Richest in Cream.

CLASS 189—Contd.

*Sheaf of wheat, exhibited in York Court.*

1. H. PENNY, SEN., Greenhills, York, W.A.

*Coir fibre, coir yarns, and other fibrous exhibits.*

1. PLANTERS' ASSOCIATION OF CEYLON, Kandy, Ceylon.

*Jadoo fibre and Jadoo liquid.* The new patent plant food and substitute for earth. Can be used with or without soil; requires no manures and but little water. Every kind of plant thrives in it, and it is one-third the weight of earth.

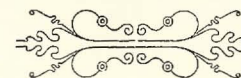
1. JADOO, LTD., Exeter, W. R. Virgoe, Old Chatsworth Nursery, Brighton, Victoria, Agent General for the Australian Colonies.

*Gloves, perfumery, toys, fancy goods of all description.*

1. JAMES C. MCKAY, Bayley Street, Coolgardie.

*Japanese arts and manufactures.*

1. TOWKICHI NISHIMURA, Montana, Coolgardie.



Agents, Robert Harper & Co. Proprietary Ltd., Fremantle.

Dixson's No. 1 CIGARETTES ARE Absolutely Pure.

YANKEE DOODLE TOBACCO.



# G. H. ADAMS & CO.

Manufacturers' Agents,  
Indent, Wine, Spirit & General Merchants

DALGETY ST., FREMANTLE.

## *Special Agencies:*

GREER'S CELEBRATED O.V.H. WHISKY .  
KIRKER GREER & CO.'S LOCH DHU AND  
SHAMROCK WHISKIES . . . .  
IND, COOPE & CO.'S ENGLISH ALE . .  
HOLLAND & CO.'S DEPTFORD UNSWEET-  
ENED AND OLD TOM GIN . . . .  
PERRIER, JOUËT & CO.'S EPERNAY .  
CELEBRATED CHAMPAGNE . . . .  
GRIFFIN & CO.'S GUINNESS' STOUT, &c., &c. .

## *Specialities:*

CANVAS, DUCKS, CALICOES, TWINES, ROPES,  
OILS, COTTON WASTE, MANCHESTER  
GOODS, &c., &c. . . . .

CORRESPONDENCE INVITED.

G. H. ADAMS & CO., DALGETY STREET,  
FREMANTE.

ALSO AT

London  
Melbourne

Sydney  
Brisbane

Adelaide  
New Zealand